

2019/2020

# FACES of Real Rutland

RUTLAND REGION CHAMBER OF COMMERCE



MEMBERSHIP DIRECTORY

Rutland  
Region  
CHAMBER OF COMMERCE





## Welcome to the Rutland Region Chamber

The Rutland Region Chamber of Commerce Mission is to create an economic climate conducive to business growth and a bridge from the business community to the general public and cultural organizations to enhance the quality of life in the broader Rutland Region.

We work collaboratively with many organizations to promote the region as an exceptional place to live work and play. We consider ourselves the intersection between the community and business and strive to promote all that is good about the region and improve the everyday lives of our residents.

The Chamber has a strong membership of valued businesses of all sorts and sizes. The Faces of the Rutland Chamber will introduce you to many in our business community and the *real* Rutland where we live, work and raise our families.

## ANNUAL EVENTS

LEGISLATIVE BREAKFAST SERIES

MONTHLY CHAMBER MIXERS

REAL RUTLAND FEUD

CHAMBER BUSINESS SHOW

INDOOR GOLF TOURNAMENT

CHAMBER GOLF CLASSIC

4<sup>TH</sup> OF JULY FIREWORKS EXTRAVAGANZA

WINTER IN AUGUST

ANNUAL MEETING

**We hope to see your face there!**





# TABLE OF CONTENTS

BUSINESS	PAGE	BUSINESS	PAGE
<b>ALDERMAN'S CHEVROLET AND ALDERMAN'S TOYOTA</b> <i>Faces of Alderman's</i>	9	<b>COMMUNITY HEALTH</b> <i>Faces of Community Health Centers</i>	19
<b>ALISON MCCULLOUGH REAL ESTATE</b> <i>Faces of Real People Dedicated To Real Estate</i>	42	<b>CORNERSTONE DENTISTRY</b> <i>Faces of Oral Health Professionals</i>	39
<b>ALLEN POOLS &amp; SPAS</b> <i>Face of Allen Pools &amp; Spas</i>	8	<b>CRITERIUM-LALANCETTE &amp; DUDKA ENGINEERS</b> <i>Faces of Building Inspections and Consulting</i>	13
<b>BALANCEWORKS</b> <i>Faces of Custom Foot Comfort</i>	21	<b>DAVIS &amp; HODGDON ASSOCIATES</b> <i>Faces of Accounting and Tax</i>	7
<b>BRIX BISTRO</b> <i>Faces of Bistro Dining</i>	11	<b>EDWARD JONES</b> <i>Faces of Trusted Branch Teams</i>	49
<b>BROC COMMUNITY ACTION</b> <i>Faces of BROCC Community Action</i>	12	<b>FACEY GOSS &amp; MCPHEE, PC</b> <i>Faces of Dedication To All Your Legal Needs</i>	22
<b>CARPENTER &amp; COSTIN</b> <i>Faces of Design &amp; Care of Fine Landscapes</i>	23	<b>FARRELL DISTRIBUTING</b> <i>Faces of Beverage Professionals Since 1933</i>	10
<b>CASELLA CONSTRUCTION INC.</b> <i>Faces of Civil Construction</i>	14	<b>FOUR SEASONS SOTHEY'S INTERNATIONAL REALTY</b> <i>Faces of Exceptional Real Estate Service</i>	26
<b>CASELLA WASTE SYSTEMS</b> <i>Faces of Sustainability &amp; Resource Solutions</i>	46	<b>GOOD SHEPHERD'S LITTLE LAMBS AND LITTLEST LAMBS EARLY LEARNING CENTER</b> <i>Faces of Early Childhood Care and Education</i>	24
<b>CASTLETON UNIVERSITY</b> <i>Faces of Transformational Higher Education</i>	48	<b>GREEN MOUNTAIN POWER</b> <i>Faces of Energy Transformation</i>	25
<b>CLEARCHOICEMD URGENT CARE</b> <i>Faces of Urgent Care</i>	52	<b>HANNOUSH JEWELERS</b> <i>Faces of Your Family Jeweler</i>	59
<b>COBRA GYMNASTICS &amp; DANCE CENTER</b> <i>Faces of Cobra Gymnastics &amp; Dance Center</i>	15	<b>HENRY'S BARBER SHOP</b> <i>Face of Old Time Barber Shop</i>	38
<b>COMMUNITY BANK, N.A.</b> <i>Faces of Full Service Banking</i>	30	<b>HERITAGE FAMILY CREDIT UNION</b> <i>Faces of Financial Cooperatives</i>	28
<b>COMMUNITY CARE NETWORK</b> <i>Faces of Community Care Network</i>	17	<b>KEYSER ENERGY</b> <i>Faces of Your Full-Service Energy Provider</i>	60
<b>COMMUNITY COLLEGE OF VERMONT WORKFORCE EDUCATION</b> <i>Faces of Workforce Education</i>	58		

# TABLE OF CONTENTS

BUSINESS	PAGE	BUSINESS	PAGE
<b>LYZ TOMSUDEN, GRAPHIC DESIGNER</b> <i>Face of Graphic Design</i>	31	<b>SOUTHWESTERN VERMONT COUNCIL ON AGING</b> <i>Faces of Support for Older Vermonters and Caregivers</i>	45
<b>MARCELL'S OIL COMPANY</b> <i>Faces of Fuel Oil Delivery and Service</i>	29	<b>THE BANK OF BENNINGTON</b> <i>Faces of Vermont Local Banking</i>	53
<b>MORGAN STANLEY</b> <i>Faces of Wealth Management</i>	57	<b>THE RICHARDS GROUP</b> <i>Faces of Insurance and Employee Benefits and Retirement Plans</i>	34
<b>PAGE'S CONCIERGE AND CLEANING</b> <i>Faces of Concierge and Cleaning Excellence</i>	20	<b>TPW REAL ESTATE</b> <i>Face of TPW Real Estate</i>	47
<b>RE/MAX SUMMIT REAL ESTATE</b> <i>Faces of Real Estate Done Right</i>	41	<b>TRUST COMPANY OF VERMONT</b> <i>Faces of Vermont's First Independent Trust Company</i>	56
<b>RIVERSIDE VETERINARY CARE &amp; DENTAL SERVICES</b> <i>Faces of Trusted Veterinary Care</i>	50	<b>UBS FINANCIAL SERVICES</b> <i>Faces of UBS Financial Services</i>	51
<b>RUTLAND INTEGRATIVE HEALTH</b> <i>Faces of Integrative Health</i>	35	<b>VELCO</b> <i>Faces of a Sustainable Vermont</i>	6
<b>RUTLAND HERALD</b> <i>Faces of Rutland Journalism</i>	43	<b>VERMONT SPORT AND FITNESS CLUB</b> <i>Faces of Health and Fitness</i>	32
<b>RUTLAND REGION CHAMBER OF COMMERCE</b> <i>Faces of the Chamber</i>	5	<b>VERMONT SYMPHONY ORCHESTRA</b> <i>Faces of Music and Music Education</i>	37
<b>RUTLAND REGIONAL MEDICAL CENTER</b> <i>Face of Community Health</i>	18	<b>VERMONT VETERANS' HOME</b> <i>Faces of Vermont Veterans' Home</i>	54-55
<b>RUTLAND REHAB MASSAGE</b> <i>Face of Massage Therapy</i>	36	<b>VIBE PORTRAIT ART</b> <i>Faces of Photography</i>	40
<b>RUTLAND YOUNG PROFESSIONALS</b> <i>Faces of Your Local Young Professionals Group</i>	61	<b>VNA &amp; HOSPICE OF THE SOUTHWEST REGION</b> <i>Faces of Home Health and Hospice Care</i>	33
<b>SPC PRINT INTEGRATED</b> <i>Face of Exceptional Service &amp; Quality Print</i>	27	<b>VMS CONSTRUCTION</b> <i>Faces of Commercial and Residential Construction</i>	16
<b>STAPLES</b> <i>Faces of Staples Retail</i>	44	<b>MEMBERSHIP DIRECTORY</b>	62-73





## FACES OF THE CHAMBER

### Rutland Region Chamber of Commerce

The Rutland Region Chamber of Commerce is a membership organization committed to maintaining an attractive business climate to retain existing businesses and attract new businesses to our region.

We advocate for, and promote member businesses through marketing, networking and advocacy in Montpelier to provide a voice for our small businesses as well as large employers. Both are vital to our economy and communities.

We recognize that a modern infrastructure is crucial to our mission. Your Chamber is a long-term advocate for continuous improvements of our infrastructure and the efficiency of utilities and transportation, including roads, rail and air. We have supported and advocated for many

of the improvements we have seen over the past decades, and continue to push for continued progress across all transportation modes.

Currently your Chamber is leading the marketing effort for our region in an effort to grow our population by promoting our assets, including our excellent quality of life, availability of jobs, attractive housing costs, quality of schools and recreational opportunities.

We are dedicated to promoting tourism to our region and improving the visibility of our hospitality and tourism-related businesses. We work to increase our exposure to potential residents and returning visitors from across the country and around the world.





vermont electric power company  
**VELCO**

## FACES OF A SUSTAINABLE VERMONT

### VELCO

The 150 employees of VELCO bring deep know-how, passion, and creativity to ensuring the reliability of Vermont's power grid today and finding innovative ways to serve Vermont's energy future. Our vision is to support a sustainable Vermont through our people, assets, relationships, and operating model.

VELCO was formed in 1956 when Vermont's local utilities joined together to establish the nation's first statewide transmission-only company in order to create and maintain an interconnected power grid. You can think of transmission as the backbone of the electric system carrying high voltage

power from where it is generated to substations where it is transformed to supply local customers through their electric distribution companies.

Headquartered in Rutland, we create healthy and sustainable environments at work, in our communities, and throughout Vermont, while maintaining the highest electric transmission reliability standards. We love supporting our local communities by sponsoring some of Rutland's great events, organizations, and activities to promote our region as one of the best places to live, work, and play.





## FACES OF ACCOUNTING AND TAX

### Davis & Hodgdon Associates CPAs, PLC

Why us? With 30 years of experience and offices in Rutland and Williston Vermont, Davis & Hodgdon Associates CPAs is a public accounting firm providing proactive business and personal tax advice, audits to nonprofit organizations, and a variety of business services including bookkeeping, business valuation and exit planning.

We do more than taxes. Our services empower business owners to focus on what matters most to them – growing their business.

We live, work and contribute to a vibrant Rutland community and our firm is passionate about corporate social responsibility (CSR). Since the inception of a formal policy in 2013, we have donated over \$127,000 in charitable giving and sponsorships and over \$407,000 in pro-bono and skills-based services to

nonprofit clients and organizations throughout Vermont, including Rutland County.

As part of our commitment to holistic financial counsel, we offer personalized financial planning and investment guidance through our sister entity Copper Leaf Financial. Copper Leaf is a fee-only, fiduciary, registered investment advisor, specializing in true wealth management with the careful, tax-aware eyes of our CPAs.

We are more than an accounting firm. At Davis & Hodgdon we are committed to using our resources and expertise to give back and help improve the community in which we work and live. We are counselors on a wide range of financial issues resulting in better decision-making and more confidence in your success.



Experience!



## FACE OF ALLEN POOLS & SPAS

### Allen Pools & Spas

Allen Pools & Spas was founded in 1957 by Dan Allen Sr. who worked for the State of Vermont as a Registered Civil Engineer. He was contacted about designing and building a swimming pool for the Girl Scout Camp at Tammarck Notch in Mendon, VT. He agreed and built his first pool. He was then contacted by a few more people that had purchased pool kits and hired him to install them. Realizing the potential for a thriving business, he started selling and installing in-ground pools all over Rutland and Windsor counties. Even after building hundreds of swimming pools, Dan Allen Sr. never learned to swim a stroke.

Today, we pride ourselves in our commitment and dedication to delivering the ultimate customer experience each and

every time. Sustained through generations of passion and professionalism with genuine regard to every customer, our community, and environment, we believe in representing products that deliver health, relaxation, and lifetime memories.

Since our establishment in 1957, we have sold, installed, and maintained hundreds of swimming pools and thousands of spas throughout Vermont, western New Hampshire and northeastern New York. We have built our reputation on professional, quality, and dependable service. We are available year round for full service on your pool, hot tub, or sauna. Whether you are looking to buy, need repairs and maintenance, or water care education, we are available 7 days a week!





## FACES OF ALDERMAN'S

### Alderman's Chevrolet and Alderman's Toyota

We moved to Rutland as a family in February of 1976. During these years we have enjoyed the outstanding quality of life that center Vermont has to offer. What a wonderful and safe place to live, ski, bike, run, swim, hike, golf and play. Obviously we enjoy an active lifestyle. Our family now has 3 generations living in the Rutland area with Phil, Mark and Stacy all active in running our dealerships.

Originally, Phil purchased the Chevrolet dealership at the end of 1975, which at the time was a substandard facility employing around 10 people, since that time we built a new

facility and our staff has grown to around 60 people.

In 2001, we purchased the Toyota dealership, which had been located in Proctor, Vermont with a small, out of date facility. Plans were immediately put in motion to construct a state of the art facility and moved it to Rutland, where we presently employ an additional 60 employees.

We could not be happier with the decision to relocate to Rutland and grow our businesses in this beautiful community.





## FACES OF BEVERAGE PROFESSIONALS SINCE 1933

### Farrell Distributing

We proudly provide high-quality beer, wine and non-alcoholic beverages to retailers throughout Vermont. With facilities in both South Burlington and Rutland, we are equally equipped to cater to the needs of different types of retailers – from national corporations, to independent stores, to fine dining establishments. We are pleased to be able to bring variety, value and choice to our customers. We are proud to represent over 75 Cicerone Certified Beer Servers, 8 Certified Specialists of Wine and 6 WSET Certified Wine Professionals.

#### Our roots run deep

We are a third-generation Vermont family business with a strong commitment to serving our customers, our employees and our community. Thomas A. Farrell and several of his

brothers founded M.M. Farrell & Sons in a small warehouse on Pine Street in Burlington, becoming the first licensed distributor in Vermont after Prohibition.

Throughout our long history, we have always believed in giving back to our community and partnering with local organizations to help those in need. This is a commitment shared by all our team members and is fueled by our deep connection to Vermont and the desire to be good stewards of our state.

Throughout its history, Farrell Distributing has maintained a strong commitment to social responsibility, participating in responsible drinking campaigns and partnering with local organizations to help those in need throughout Vermont.





## FACES OF BISTRO DINING

### Brix Bistro

Brix Bistro is more than just a wine bar: It's a casual restaurant that, in addition to a terrific selection of wines, also serves craft beer, specialty cocktails, a diverse bistro menu and the area's best desserts!

Peter Bourque, general manager, head bartender and well-known local, uses his many years of experience in the restaurant and wine industries to keep things fun and interesting. Cocktails are tasty, beer is local and cold and the wine selection extensive.

The dining experience is forever fresh as head chef Matt Bonstead creates a rotating menu of seasonal main course dishes. Enjoy fresh appetizers, a hearty selection of meats and

cheeses as well as salads, flatbreads, sliders, and pasta.

What sets Brix Bistro apart are the incredible desserts created by co-owner Jill Talbot. The dessert menu changes weekly, keeping it creative and exciting. You can check out the weekly specials on Instagram or Facebook. You'll be hard pressed to find better desserts anywhere!

The ambiance is comfortable and casual. Brix is a great choice for pre-show dinner and drinks, post show appetizers and desserts or to meet up after work with some good friends. During the summer enjoy the outdoors and urban life on the patio indulge in the great food and drinks at Brix Bistro.





## FACES OF BROCC COMMUNITY ACTION

### BROC Community Action

In 1964 President Lyndon B. Johnson and the United States Congress passed the Economic Opportunity Act and effectively launched the nation's War on Poverty. Since that time BROCC Community Action has been providing assistance to people in our region living in poverty or of low income. BROCC Community Action not only helps individuals and families with critical needs but they also provide opportunity; a path forward. What they call economic self-sufficiency.

In addition to providing people with basic needs like food, shelter, fuel, and utility assistance; BROCC Community Action also provides thousands of hours of on the job training, as well as micro business counseling, start up assistance, and a

robust series of workshops providing new skills and learning opportunities for personal and professional growth.

The organization has a strong professional team providing home weatherization from start to finish. This department improves Vermonters lives by bringing them comfort and significant financial savings. And BROCC Community Action is home to the Rutland County Community Justice Center taking a restorative approach to building the community.

BROCC Community Action has a staff of fifty dedicated individuals. With dignity and respect as their tenet, BROCC Community Action is proud to provide these services to the region.





## FACES OF BUILDING INSPECTIONS AND CONSULTING

### Criterium-Lalancette & Dudka Engineers

Criterium-Lalancette & Dudka Engineers has been providing comprehensive residential and commercial building inspections throughout Vermont and New Hampshire since 1988. We are an engineering consulting firm specializing in building engineering and consulting services as well as Homeowner Association services. We are the Vermont office of Criterium Engineers, founded in 1957. Our national organization has consulted with clients on over 750,000 properties.

We work in support of real estate; buyers, sellers, owners, managers, builders, contractors, lenders, insurers, attorneys, or anyone who has a vested interest in real property. Let us know what your particular needs are and how we can be of service to you.

We know all types of buildings, having evaluated more than 30,000 buildings throughout Vermont and New Hampshire. From major hospitality, institutional, health care and transportation facilities, to high rise multi-family and townhouses, to single family homes. We utilize current methodologies and the latest equipment, including drone inspections, to provide you with the information you need to make an informed decision. Let Criterium-Lalancette & Dudka Engineers work with you on your next project!

Our reputation and consistent professionalism have made us the engineering firm of choice for many and we remain dedicated to proving our value to each of our clients.





## FACES OF CIVIL CONSTRUCTION

### Casella Construction

Founded in 1987 by brothers Doug and John Casella, Casella Construction has grown to be one of the largest civil and heavy highway contractors in New England. Still a family-owned company today, Joseph Casella and John Casella II now lead our team of nearly two-hundred multi-disciplinary employees.

We offer expertise in: heavy highway, utility installation, environmental contracting, commercial site development, demolition, and transportation.

We pride ourselves on being at the forefront of technology and environmental stewardship. We complete challenging

projects at a competitive price while exceeding current environmental standards.

We are recent recipients of two Best Builder Awards in the Heavy Industrial Aviation and Environmental categories from the Associated General Contractors, thanks to our employees' professionalism and commitment to quality and safety.

We believe the key to our continued success is our ability to build, develop, and recognize the best employees in the industry. We value hard work, loyalty, and commitment. Learn about how we dig deep for our customers, our employees, and our community at [www.casellainc.com](http://www.casellainc.com).





## FACES OF COBRA GYMNASTICS & DANCE CENTER

### Cobra Gymnastics & Dance Center

Owned and operated by Shelby Collett, Cobra Gymnastics & Dance Center has been providing exciting gymnastics, yoga, and dance instruction for the greater Rutland community since 2010.

Hosting local and guest teachers, the pristine and beautiful Studio Serpentine offers a chance for a serene experience in Yoga Dance, Kripalu, Integrative, Hatha, Partner or Foundational Yoga. The dance programs include Nia, Hip Hop, African and Latin Dance (by Rutland's very own Dancing with Stars Champion!). For a Tribal Bellydance experience, join Shelby for a class or enjoy the performances of The Sisterhood of the Silk Road, Rutland's bellydance troupe, since 2005. The studio also offers bodywork and movement workshops throughout the year.

Entering the gymnastics side of the building will heighten your senses with the smell of chalk, and the sounds of joyful expression. Featuring Rutland's highly awarded competitive gymnastics team, the gym provides a platform for creative movement, emotional strength and courageous gymnastics skills. Hosting lighthearted classes for preschool ages and school age children as well, Cobra gives their students a sensational foundation in the sport, providing skills in balance, agility, coordination and strength.

All in all, Cobra focuses on providing life enhancing experiences that ask and allow their students to grow, strengthen and enrich their bodies and minds.





## FACES OF COMMERCIAL & RESIDENTIAL CONSTRUCTION

### VMS Construction

VMS Construction, located in the heart of Rutland, has been a leading General Contractor and Construction Management firm for over 25 years in the Central and Southern Vermont regions. VMS specializes in all types of commercial construction, ranging from institutional, multi-family, industrial, retail, office, and historical. VMS also has a residential division which specializes in everything from new homes to kitchen renovations.

VMS believes in the value of teamwork and has cultivated successful partnerships with many architects, engineers, subcontractors, and vendors in the local area and beyond. These relationships are founded in collaboration, communication, respect, and trust. This provides the best working environment

for all parties to come together as one Team to deliver the highest quality workmanship, while maintaining budget and schedule, for their clients.

Beyond delivering customer satisfaction, VMS has a strong sense of values. VMS cares about their employees and our community. VMS builds a close and supportive relationship with all staff members, fostering a positive environment where they can reach their full potential.

Their dedication and hard work over the last few decades have resulted in a solid reputation of fine craftsmanship, integrity, professionalism, and community involvement.





**Community Care Network**

Rutland Mental Health Services & Rutland Community Programs

thriving community, empowered lives



## FACES OF COMMUNITY CARE NETWORK

### Community Care Network

Community Care Network is comprised of Rutland Mental Health Services and Rutland Community Programs. The mission of CCN is to enhance the health and well-being of our communities, individuals and families through responsive, innovative and collaborative services. The programs of Community Care Network serve more than 3,000 people each year throughout Rutland County. Our dedicated 350-plus

employees are focused on improving the health of Rutland County residents and their families living with mental illness, developmental disabilities, and substance use disorders, in addition to providing an array of services for younger children and older Vermonters. Please visit our website for a complete listing of services and contact information.





## FACE OF COMMUNITY HEALTH

### Rutland Regional Medical Center

As Vermont's largest community hospital, our services extend well beyond taking care of an injury or illness. We are also responsible for helping people get and stay healthy. We have a strong community care management system where we team up with primary care providers to focus on prevention, wellness, and the management of chronic diseases. We offer free or low-cost classes and workshops that focus on conditions like heart health, pain management and diabetes.

Our 37 specialty clinics, 277 highly skilled medical staff, and over 1700 additional employees and volunteers, are committed to providing exceptional care and service to patients. Voted the "Best Place to Work" in the 2019 Rutland Herald survey, as well as receiving the 2018

Advisory Board Workplace of the Year Award, Rutland Regional boasts a highly engaged workforce. Our employees are invested in the community and can be seen participating in food drives, neighborhood beautification projects, and coaching youth sports.

We have distinguished ourselves by being named a "Best Regional Hospital" by *US News & World Report* for 2018-2019, and more recently received our seventh "A" rating in a row for Patient Safety from the Leapfrog group.

Everyone at Rutland Regional recognizes that when it comes to healthcare, we are all in this together. Healthy You. Healthy Together.





## FACES OF COMMUNITY HEALTH CENTERS

### Community Health

We're still Community Health Centers of the Rutland Region, but we've officially shortened our name to Community Health to make it easier to remember. Community Health is a group of seven comprehensive primary care centers and two dental practices that provides care to approximately 75% of Rutland County residents. Community Health has locations in West Pawlet, Shoreham, Brandon, Castleton and multiple locations in Rutland. All sites are designated Level 3 Patient Centered Medical Homes for meeting national standards for care coordination and on-going quality improvement. All of our offices are accepting new patients.

More than 370 employees work together to help us meet our mission to improve the health and wellness of all people in the communities we serve. Community Health serves all

patients without regard to income or insurance status and provides a sliding fee discount based on household income.

The offices have convenient hours including on weekends. We offer a full range of services including behavioral health services, preventative health care, women's health care, well-child care including immunizations, management of chronic or serious illness and workers comp injuries. Some locations have X-ray and laboratory services available. There is a pharmacy at the Brandon location. We offer Express Care at both Rutland and Castleton for all your minor illnesses and injuries. Express Care is open from 8am to 8pm Monday-Sunday and walk-ins are welcome

See our website, [CHCRR.org](http://CHCRR.org), for more information.





## FACES OF CONCIERGE AND CLEANING EXCELLENCE

### Page's Concierge and Cleaning

Page's Full Service Concierge & Cleaning is celebrating nearly 5 years in business. Stephanie Cornell, owner and operator of Page's has had the pleasure of growing her business from just a few clients to well over 100. With the dedication of our staff and the growing list of happy clients, Page's success is insurmountable.

We are excited to announce our new Concierge Service which sets us apart from anything in the local industry, as we continue to provide the excellent service, attention to detail and consideration to our many clients. We would like to invite all of you to visit our Facebook and Instagram page for more details.





## FACES OF CUSTOM FOOT COMFORT

### BalanceWorks

BalanceWorks is your one-stop shop for custom foot comfort. Specializing in foot care, footwear and shoe repair, we blend old-world craftsmanship with 21st-century technology to provide properly fitted comfort shoes and foot orthotics. BalanceWorks is the answer for better balance, proper stance and gait for improved health, fitness and performance.

Locally owned and operated by David Goodspeed--a Board Certified Pedorthist--since 1988, we're proud to be part of the Rutland community for more than three decades. BalanceWorks offers a wide range of state-of-the-art services and products. Among them are 3D-printed, custom foot orthotics and diabetic/orthopedic comfort shoes, boots, sandals, and slippers.

Lenoci's Shoe & Leather Repair has been serving Rutland since 1932 and merged with BalanceWorks in 2007 to create a full-service foot and shoe establishment. Lenoci's is a comprehensive cobbler shop, one of four remaining in Vermont, offering a variety of services from resoling and stretching boots and shoes to sharpening a variety of blades. We'll keep your favorite leather goods in top shape--if it can be fixed, we can do it!

We pride ourselves on customer service, craftsmanship and high-tech solutions for your foot and shoe needs.

Contact us for a free foot and shoe evaluation!





## FACES OF DEDICATION TO ALL YOUR LEGAL NEEDS

### Facey Goss & McPhee P.C.

FACEY GOSS & MCPHEE P.C. ATTORNEYS AT LAW PROVIDES DIVERSE, COMPREHENSIVE, EFFICIENT AND SOUND LEGAL SERVICES. Facey Goss & McPhee P.C. is a full-service law firm based in Rutland, Vermont that was founded in 1984. The firm presently has seven partners, four associates and one "Senior Counsel". We offer clients in Vermont, New Hampshire, New York and Massachusetts a complete range of legal services with an emphasis on quality of work product, competitive cost and an overriding commitment to client service at a sophistication level comparable to large urban law firms. The attorneys and staff at FG&M are highly capable and versatile, with deep experience in Commercial Transactions, Real Estate & Condominium Law, Energy & Utility Law, Civil Litigation, Environmental and Land Use Permitting, Criminal Defense,

Tax and Estate Planning, Immigration, and Family Law. Every one of our Vermont attorneys brings a wealth of professional experience in their respective practice areas, with a particular expertise on the intricacies of Vermont law. Our Vermont attorneys are also actively involved locally, participating in numerous professional and community organizations. If you or your business is in need of either general or very specialized legal services, we invite you to learn more about Facey Goss & McPhee. Please explore our website at [www.fgmvt.com](http://www.fgmvt.com) to find information about our practice areas and Vermont attorneys, the latest legal news, and other essential resources. Feel free to contact any of our Vermont lawyers directly through our website or telephone anytime at 802-773-3300.





## FACES OF DESIGN & CARE OF FINE LANDSCAPES

### Carpenter & Costin

Carpenter & Costin was established in Vermont in 2005 and is locally-owned by Russ Marsan and Matt Cataldo. We specialize in providing a full range of landscape design and construction services and snow removal services to residential, commercial and institutional properties throughout Central VT & Western NH.

Russ and Matt take a personal interest in every client's desire to have an attractive property. We work to understand your needs, then design and create landscapes that provide years of enjoyment while enhancing curb appeal that also improves property value. We take great pride in establishing and maintaining trusting relationships with our clients, staff, vendors and community.

Our conscientious team ensures your landscape enhances the image of your home or business by creating and maintaining pleasant outdoor spaces where family, friends and associates enjoy time together.

We value the personal development of our staff through continual education and training in the most up-to-date best practices and advancements in products, processes and results.

We actively work to get kids and families to put down their electronic devices, get off the couch, become more active, and Come Alive Outside!





## FACES OF EARLY CHILDHOOD CARE AND EDUCATION

### Good Shepherd's Little Lambs and Littlest Lambs Early Learning Center

Good Shepherd's Little Lambs Early Learning Center, founded in 1997, was created to serve the Rutland community by providing young children the opportunity to learn and experience their world in an exciting, hands-on setting facilitated by dedicated teachers, enthusiastic community members, and engaged families.

As a Vermont accredited 5 STAR center they have been recognized as one of the highest quality programs in the state for their outstanding care and commitment to children and families. They have also been voted "The Best of the Best Preschool" and "The Best of the Best Childcare" in Rutland since 2012. Their dedication to serving Vermont families continued with the opening of Good Shepherd's

Littlest Lambs, a second childcare center, serving infants and toddlers exclusively in 2018.

It is the desire of both centers to celebrate and appreciate the diversity and uniqueness in all children and their cooperative goal is to nurture children's natural curiosity with their world, to initiate educational activities that stimulate and encourage growth and achievement, and to support and strengthen families.

Good Shepherd's Little Lambs and Littlest Lambs are places in Rutland where children are accepted and loved...places where laughter and play are cherished...places where children are respected and heard...and places where Vermont families are welcome, involved, and encouraged!





## FACES OF ENERGY TRANSFORMATION

### Green Mountain Power

Green Mountain Power partners with customers to improve lives and transform communities. GMP is focused on a new way of doing business to meet your needs with integrated energy services that help people save energy and money, and be more comfortable, while continuing to generate clean, cost-effective and reliable power. GMP is the first utility in the world to get a B Corp certification, meeting rigorous standards for our commitment to the environment, employees, and the community.

GMP is proud to work with Rutland City officials, businesses leaders, and residents, to make Rutland the energy city of the future. Rutland made history in 2015 when it became the Solar Capital of New England, with more solar per capita than any other city in New England. This incredible achievement was the result of the strong partnership between Green Mountain Power and the

Rutland community to make energy innovation a key to economic development and revitalization. GMP is working with more than 80 local businesses who have donated time and materials to the Rutland Innovation Home Contest to build and give away a brand new energy smart home. The winner of the essay contest will be a family who wants to be a part of the Rutland community. GMP is also thrilled to lead other city initiatives like Rutland Blooms, the sculpture project and the Gift-of-Life Marathon, which continue to build community pride.

The GMP Energy Innovation Center in Rutland is the heart of our energy innovation mission. Here our team is working to bring the latest in energy technology and clean energy solutions to our customers. The EIC is located on Merchants Row. Come in and say hi, we'd love to talk!





## FACES OF EXCEPTIONAL REAL ESTATE SERVICE

### Four Seasons Sotheby's International Realty

The Rutland office of Four Seasons Sotheby's International Realty is a beautifully renovated building at the corner of Main Street and Roberts Avenue. There are many special features offered within this historic property but none more special than the agents which comprise the office. The motto of Properties of Distinction at Every Price Point is something Four Seasons SIR believes in deeply. No matter if you own a \$150,000 home or a million dollar home these experienced, professional Realtors will work with you to showcase your property in the light and distinction in which it deserves. Buyers seeking the home of their dreams can be assured

the folks at Four Seasons SIR will successfully guide them through the process. The agents and staff at Four Seasons SIR encourage sellers and buyers to see their relationship as a partnership in which they work together to achieve their real estate goals.



Four  
Seasons

Sotheby's  
INTERNATIONAL REALTY





## FACE OF EXCEPTIONAL SERVICE & QUALITY PRINT

### SPC Print Integrated

SPC has over 100 years of printing experience. We work with all kinds of people who understand the power of the printed word: educational institutions, art museums, graphic designers, healthcare professionals, book publishers, you name it! Anyone who needs help with a print project would benefit from having SPC on their team!

We are dedicated to seamless execution and quality. Our process goes from project inception through to fulfillment. SPC is known for being easy to work with, flexible, reliable and able to meet tight deadlines. We consult, offer solutions and are a resource for all clients until every aspect of a project is just right. Because of this, our clients consider

SPC to be much more than just another print vendor they passively send design files to; our clients consider SPC to be a partner and problem solvers.

Our mission is to make working with SPC as easy and hassle free for the customer as possible. We go the extra mile to ensure that no detail is overlooked, and that each customer gets the same outstanding service every time. When you need help with a print project, whether it's more traditional or extra special, contact SPC. Your local Account Consultant, Roger Vanasse (603) 729-6848, can assist you in making your print materials look their absolute best!





Heritage Family  
CREDIT UNION



## FACES OF FINANCIAL COOPERATIVES

### Heritage Family Credit Union

The purpose of the Heritage Family Credit Union is to provide friendly, personable, high quality services for the entire family. Heritage Family Credit Union is member owned, not-for-profit financial institution. Unlike other financial institutions, a credit union is owned and operated by the people it serves; members are united by a common bond of association and democratically operate under the guidance of the volunteer Board of Directors and the National Credit Union Association's regulations.

Heritage Family Credit Union offers a wide variety of financial products and services including auto loans, credit cards, mortgages, business services and construction loans to meet all of our members purchasing, refinancing and home remodeling needs. Additionally, Heritage Family Credit Union

offers wealth management and retirement services within its Heritage Way program. Also, Heritage Family Insurance Services allows you to conveniently keep your property and casualty insurance with the credit union you trust.

The credit union has ten branches throughout Vermont, located in Rutland, Fair Haven, Castleton, Brandon, Manchester, Bennington, Ludlow and Londonderry, as well as one branch in Hooksett, New Hampshire. As a federally-chartered community credit union, people are eligible to join Heritage Family Credit Union if they live, work, worship, do business, or go to school in any of the following communities: Rutland, Addison, Bennington, Windsor or Windham counties in Vermont, or the town of Hooksett, New Hampshire.





## FACES OF FUEL OIL DELIVERY AND SERVICE

### Marcell's Oil Company

*"At Marcell Oil we strive for excellence in customer service"*

Established in the fall of 2008, Marcell Oil is the largest locally owned and operated oil company in both Rutland and Bennington Counties. With over 6,000 customers, we proudly serve Rutland and Bennington counties seven days a week. We deliver the highest quality fuel oil available to homes, construction sites, slate quarries, marble quarries, sugar makers, farmers, loggers and commercial properties. Our service department specializes in tank replacements & furnace cleanings. With 8 delivery drivers and 3 customer service representatives, Marcell Oil is committed to meeting your fuel oil needs.



#### **The Rutland Herald**

Best of the Best Fuel Dealer 2016  
Best of the Best Fuel Dealer 2017  
Best of the Best Fuel Dealer 2018  
Best of the Best Fuel Dealer 2019

**Market Surveys of America**  
Best Heating Oil Company 2017





## FACES OF FULL SERVICE BANKING

### Community Bank, N.A.

Community Bank, N.A. is a full-service financial institution with more than 230 locations across Upstate New York, Northeastern Pennsylvania, Vermont and Western Massachusetts. We offer personal loans, mortgages, checking and savings accounts, credit and debit cards, online banking, mobile banking, commercial loans, cash management and more. In addition to a full range of retail and business banking services, we also

offer comprehensive financial planning, insurance, and wealth-management services. Community Bank, N.A. has consistently been ranked among the top 15 best banks in America by Forbes magazine for the past eight years running, and was most recently ranked third in 2019. For more information, go to [www.cbna.com](http://www.cbna.com) and Bank Happy! (Member FDIC, Equal Housing Lender, NASDAQ "CBU").







## FACE OF GRAPHIC DESIGN

### Lyz Tomsuden, Graphic Designer

Graphic design is the process of combining visual elements and text to create an overall message. Whether for commercial, educational, or cultural purposes, graphic design is a form of communication as well as an art. Whether it's a simple poster for a one-time event or the many branded facets that make up your business identity over a period of time, I can help.

Good visual design plays an important role in how you are perceived. In our fast paced society, you only have seconds to convey who you are and what you want to say. I can help showcase your personality and goals with a customized design that sets you apart from the competition.

Since 2006, I've used my skills to assist individuals, nonprofits and businesses throughout the Rutland Region to creatively

communicate their messages. You've likely seen my design work everywhere from the playbills of the Paramount Theatre to the annual report of the VNA & Hospice, as well as the branding of the Rutland Young Professionals and the design of the I Am Vermont Strong fundraising campaign. In 2017 I launched my side business into a full-time career, taking on a variety of exciting new projects and clients, including this very guide for the Rutland Region Chamber of Commerce.

As an independent business owner, you get the ability to work directly with me to transform your abstract ideas into a visually cohesive message. I'm friendly, flexible and accessible with knowledge and experience in multiple forms of design. I'm always open to whatever projects come my way, so don't hesitate to reach out!





**VERMONT**  
SPORT & FITNESS CLUB



## FACES OF HEALTH AND FITNESS

### Vermont Sport & Fitness Club

Award-winning Vermont Sport & Fitness Club is focused on providing the number one fitness experience in Vermont. When you walk inside, VS&F has a bright, energetic atmosphere that is also comfortable and welcoming. You will always be greeted by a friendly face available to answer any questions, or talk about your day. Once in the club, it's time to choose your own adventure! Head out to the pool or steam room to relax or go straight for one of our spacious fitness or weight rooms with your personalized workout.

You can meet your trainer on the floor for your session or burn some calories and clear your mind in our well-equipped cardio room. If you're looking for classes, you're in the right spot. Meet up with friends and enjoy one of our 30+ classes each week with your favorite instructor. For 25 years members have found success with their health and fitness at VS&F, and you can too. The first-class experience is designed to make you stronger, fitter, and full of energy, to help you get the most out of life.





## FACES OF HOME HEALTH & HOSPICE CARE

### VNA & Hospice of the Southwest Region

High-quality home health care and hospice care can offer peace of mind in the most challenging of situations. Since 1946, the VNA & Hospice of the Southwest Region (VNAHSR) has served vulnerable populations in our community such as at-risk children, the elderly, those with disabling and chronic illness, and people facing end-of-life.

Founded in Rutland, Vermont, the VNAHSR is a non-profit, Medicare-certified home health and hospice agency delivering a wide-range of advanced medical care with compassion, dependability, and expertise to people of all ages.

Serving Bennington and Rutland Counties in Vermont, our staff of trusted health professionals and caregivers are committed to providing exceptional care to patients and families.

Proud of our national reputation for quality care, VNAHSR is highly rated for Quality of Patient Care and Patient Satisfaction from the Centers for Medicare & Medicaid Services and is recognized as one of the nation's top performing home health agencies, by HomeCare Elite, a market-leading review that identifies top Medicare-certified agencies.





## FACES OF INSURANCE, EMPLOYEE BENEFITS AND RETIREMENT PLANS

### The Richards Group

When was the last time you had an objective review of your commercial or personal insurance to make sure you have the best coverage at the most competitive price? Have you analyzed your employee benefits program and retirement plan recently to look for opportunities to attract and retain talented employees and enhance your bottom line? The Richards Group has helped clients in the Rutland community for decades and have greatly expanded our local capabilities.

#### Local know how.

Located at 92 Center Street in Rutland, The Richards Group is an independent, full-service insurance, employee benefits and retirement plan firm, providing proactive solutions.

#### We're here for you.

While we're local to Rutland, we bring clients the advantages and scale of a larger Vermont based firm. The Richards Group has 12 locations and 130 employees throughout Vermont & New Hampshire: we bring expertise, markets, underwriting leverage, technology and claims advocacy that can prove valuable to our clients. We are proud to have been named one of the "Best Places to Work in Vermont" in each of the past 4 years.

#### Prepare for tomorrow by contacting us today.

The Richards Group is dedicated to providing Rutland area clients with proactive solutions, expertise and local service. For more information, please visit [www.therichardsgrp.com](http://www.therichardsgrp.com) or call us at (802) 775-2503 or (800) 222-6016.





## FACES OF INTEGRATIVE HEALTH

### Rutland Integrative Health

Rutland Integrative Health is a health care clinic in Rutland Vermont, operating in a new location at 26 West Street. We specialize in complementary and alternative modalities including acupuncture, herbal therapy, naturopathic medicine, primary care, nutrition/dietary therapy, body work and wellness. Rutland Integrative Medicine is committed to providing quality natural health care. Our mission is to provide guidance and support while empowering patients to regain health and vitality.

We see a wide variety of patients from infants to adult and treat a wide range of conditions, including but not limited to,

gastrointestinal disorders, pain and inflammatory conditions, upper respiratory issues, and auto-immune diseases.

Within the office, we are a diverse group of natural health care professionals. Dalite Sancic, is the owner of the building and a Doctor of East Asian Medicine and Licensed Acupuncturist. Greg Burkland is a Naturopathic Doctor, a primary care provider and specialty care. Beth Bloomfield is a Licensed Acupuncturist. Rob DiTursi is a Licensed Massage Therapist. Kali Younger is a Registered Dietitian.





## FACE OF MASSAGE THERAPY

### Rutland Rehab Massage

*6 Time Winner: Market Surveys of America, Best of the Best Award-Massage Therapy*

Medical massage is a niche Pam Lenoci has been providing through her practice for 18 years. Although therapeutic treatments are available through Rutland Rehab Massage, medical massage is the forte of the practice.

Those who have been injured on the job or in an accident can benefit tremendously from medical massage. As Rutland Rehab Massage is one of the few practices that accept payment from insurance providers, it becomes more cost effective for many of these individuals. Further, medical massage can be an integral part of a rehabilitation program, often preventing surgical intervention, can be used for pain management as an alternative to opiates and leads to improved overall health.

Pam has treated many children dealing with stress or injury and has made helping kids a lifelong endeavor. She is involved in the Upward Bound Program at Castleton University and instrumental in raising funds for the Alexandra Brown Memorial Scholarship, a scholarship in honor of her daughter who took her own life twelve years ago. She speaks publicly about teenage suicide, teenage drinking and cyber bullying. Pam is passionate about sharing her daughter Alix's story in hopes it helps even one child through challenging times.

Pam's office is warm, inviting and private. She takes exceptional care of each and every client and believes massage therapy should be a part of everyone's health care plan.





## FACES OF MUSIC AND MUSIC EDUCATION

### Vermont Symphony Orchestra

The Vermont Symphony Orchestra has served communities statewide for 85 years. Last year, we held 39 concerts in 20 towns across the state, performing in large concert halls, small local venues, community centers, and beautiful outdoor spaces.

We're best known for our full-orchestra classical concerts, but we also bring music to Vermonters in many other ways. We love collaborating with pop and rock artists, like last year's concert with the rock band Guster, or our upcoming performance with Vermont soul singer Kat Wright. Our educational initiatives reach thousands of Vermont students annually through interactive in-school performances, informative backstage tours, and more. You can even book a VSO musician or ensemble for your wedding or special event!

We look forward to many performances in the Rutland area during our 2019/2020 season. We'll be performing a world-premiere commission paired with a film on September 26 in Castleton, on our Made in Vermont Statewide Tour. We're bringing our Jukebox string quartet to Merchants Hall twice this season, on January 17 and March 13, for a mix of classical and contemporary music. This year's VSO at the Paramount series will include Holiday Pops on December 13, plus two classical concerts: Love, Leila and Luther on January 26, and Epic Mozart on March 22.

We hope to see you at one of our concerts. We're making this music for YOU!





## FACE OF OLD TIME BARBER SHOP

### Henry's Barber Shop

Henry's Barber Shop is an old school barber shop, specializing in traditional men's cuts, as well as today's styles and trends. Henry's Barber shop, located about a block outside of the Downtown Rutland Historic District, is a family owned business established in 1955 by Henry Tyl (1921-2007). Henry's son Steve Tyl, who grew up above and in the shop, has owned and operated the business since 1988.

Henry's Barber Shop is steeped in Rutland's history and traditions. The barber shop has served several generations of local families who appreciate the old style barber shop feel, welcoming atmosphere and eclectic décor.

Going to a barber shop is about more than getting a nice cut at a fair price, which is a specialty at Henry's Barber Shop. It's about the total experience from the friendly smile as you walk in the door, the opportunity to relax and unwind and to socialize and catch up on what is going on in the community. Henry's Barber Shop is open Tuesday & Wednesday 8:30am-6pm; Thursday and Friday 8:30am-9pm and Saturday 7am-3pm. Henry's Barber Shop is walk in only, no appointments are accepted.





## FACES OF ORAL HEALTH PROFESSIONALS

### Cornerstone Dentistry

We are a team of professionals who are passionate about having a positive impact on people's lives. We understand that our patients are unique individuals and we enjoy helping them prevent dental complications by establishing healthy habits.

Cornerstone Dentistry was established in Fall of 2014, however the practice has been taking care of patients in the Rutland area for over 40 years! Our services include comprehensive general dentistry, clear aligner therapy (Invisalign), tooth whitening, dental implants and other tooth replacement options.

Dr. Yau graduated from McGill University with a degree in Engineering. After working in the corporate world for five years, she decided to pursue dentistry. She graduated

from the University of Toronto with a D.D.S. degree. She also completed a general practice residency in Akron, OH. Following residency, Dr. Yau worked in corporate dentistry in Queensbury, NY. She met with Dr. Michael Dick's team in 2014 and as they say, the rest is history.

Our team cares for patients with compassion and respect. We are mothers, daughters, sisters, neighbors. We understand that most people do not enjoy going to the dentist and we are honored to serve each of our patients. We try to make the dental visit as pleasant and effective as possible.

The Cornerstone Dentistry team continues to welcome new patients.





## FACES OF PHOTOGRAPHY

### Vibe Portrait Art

"Wow, that was actually much easier and more fun than I'd thought it would be." We hear that sentiment shared frequently around the studio at Vibe Portrait Art. We realize that many people in front of our lens may have a little apprehension about being photographed...so our number one goal is to foster a relaxed atmosphere of fun and creativity.

Vibe is the Rutland Region's largest photography studio, boasting:

- Three camera rooms (two of which are natural-light studios)
- Comfy large screen TV image-viewing lounge
- Outdoor portraits on the grounds of our historic 1865 Victorian manse
- We'll go to any location to create your totally customized portrait!

Did you know that Vibe also has a commercial photography division? If you are looking to promote your company's or organization's brand, Vibe Commercial Imaging is your creative emporium for all things photography. We're proud to have produced virtually all of the images in this 'Faces' directory that you are viewing right now.

Vibe has repeatedly been voted *Best Photography Studio* in the Rutland Region by Market Surveys of America and the readers of the Rutland Herald. Vibe was also voted 2019's *Best Commercial Photographer* by the readers of Vermont Business Magazine.

Vibe has truly become Rutland's favorite photographer.





## FACES OF REAL ESTATE DONE RIGHT

### Re/Max Summit Real Estate

When it comes to Real Estate, You deserve the peace of mind knowing you are in the best hands. After all, real estate is typically one of your largest assets and the process can feel confusing, tedious and daunting at times. There are bound to be questions, concerns and variables to take into account- so you want to get it Right.

When you partner with our growing team at RE/MAX, you are partnering with the largest and most productive Real Estate brand in the world. RE/MAX Summit's resources are global, yet you can be assured, you will receive the utmost individual

personal care from local people with the drive, expertise and knowledge of this great region of Vermont.

We pride ourselves in our relationships with our community and clients. There is nothing more satisfying than meeting people and knowing we have made the difference in their ability to fulfill their Real Estate Dreams.

Whether you are planning for your future and would like to discuss the current market trends or you've decided to take that next step, give us a call....you will be glad you did!





## FACES OF REAL PEOPLE DEDICATED TO REAL ESTATE

### Alison McCullough Real Estate

#### Real Estate, Real People, Real Results

"They have been real estate professionals in central Vermont for a combined 30+ years. They have very successfully brought a realistic, caring and honest approach to their real estate clients over their career. They take great pleasure in bringing buyers and sellers together to accomplish their goals in a relaxed, professional manner. Alison believes that taking the time to listen to buyers and sellers needs and desires gives them the edge in making the real estate buying or selling process simple and enjoyable."

Whether you are a first-time home buyer, a vacation home seller or buyer, looking for a property on the lake or someone looking to simplify those golden years downsizing to retirement, Alison's goal is to match properties to lifestyles. Alison and her Associates have the important ability, in today's market, to provide all of their information via an informative, easy to navigate website, [www.alisonmcculloughrealestate.com](http://www.alisonmcculloughrealestate.com) which gives their customers easy access and a no pressure approach to the real estate experience.

*The motto at Alison McCullough Real Estate is "Because Nice Matters!"*





## FACES OF RUTLAND JOURNALISM

### Rutland Herald

We started as a newspaper, many years ago - more than 200 years ago, in fact. And just in the last 25 years, we've expanded into other mediums, with websites, social media and now podcasts and other innovations. Through all of the changes, a few things have remained constant: Our communities look to us to find out what's going on; our communities use and rely on us to connect beyond their own demographic boundaries; and the public relies on us to hold public officials accountable.

As the only newspaper in Vermont history to win the Pulitzer Prize, the Rutland Herald has a storied past, but is constantly forging new relationships with readers and advertisers. Tens

of thousands of people welcome us into their lives every day, via a print edition delivered to their doorstep, an article on the web site, an email newsletter, a podcast or a post on social media. At a time of generational change in media, we are holding to our valued traditions while we forge a new path as an independent voice in the Rutland region.

At the heart of that is our people - a mix of veterans and newcomers, with a wide range of talents, who love this region and are working to make it a better place. We are the faces of Rutland media!





## FACES OF STAPLES RETAIL

### Staples

Staples US Retail supports lifelong achievement for small businesses and consumers with the products and resources they need for continued professional and personal growth. With a focus on community and shared learning, Staples retail locations serve millions of customers from entrepreneurs and small businesses owners to parents, teachers and students. For more information about Staples Retail and to stay up to date on weekly deals, please visit us in stores or online.





## FACES OF SUPPORT FOR OLDER VERMONTERS AND CAREGIVERS

### Southwestern Vermont Council on Aging

Founded in 1974, Southwestern Vermont Council on Aging (SVCOA) has been working to ensure maximum independence and quality of life for older Vermonters in our region for over 40 years.

Serving both Bennington and Rutland counties, SVCOA's dedicated and compassionate staff work tirelessly to deliver a range of essential programs and services to clients of the agency.

From services such as Case Management, Options Counseling, SVCOA HelpLine, Transportation and Nutrition,

to our Elder Care Clinician, Wellness, Money Management, Volunteer, Senior Companion and State Health Insurance programs, SVCOA strives to provide a suite of resources to help Vermonters age independently and in the setting of their choice.

SVCOA is proud of its record of service, but equally as excited to continue to serve older Vermonters in our area for years to come.

As always, don't hesitate to give us a call or stop by and see us – we're always here for you!





## FACES OF SUSTAINABILITY & RESOURCE SOLUTIONS

### Casella Waste Systems

Founded in 1975 with a single pick-up truck, Casella Waste Systems has grown well beyond its humble beginnings in Rutland, Vermont to become one of the nation's leading providers of waste and recycling services. Casella currently employs more than 2,400 employees throughout Vermont, Maine, New Hampshire, Massachusetts, New York, and Pennsylvania and serves customers in more than 40 states. We are especially proud of our support and dedication to the success of our local communities throughout the Rutland region and beyond.

Sustainability, in all senses of the word – resources, people, and the environment – is the foundation of our business. Every day, we are building critical infrastructure to protect the

health and safety of our society, and developing and investing in innovative solutions to build a better tomorrow for future generations.

In every way, our most important resource is our people. Our deep understanding of resource renewal also guides us in cultivating a culture of lifelong learning and career growth, and flows naturally from our deepest core values and our unwavering dedication to safety and wellness.

We believe the work we do is vitally important and meaningful and that our employees are the stewards of our region's breathtaking natural beauty. We seek to hire the most talented and dedicated people to grow our business and serve our customers. Please visit us at [www.casella.com](http://www.casella.com) to learn more.





## FACE OF TPW REAL ESTATE

### TPW Real Estate

We Know Just the Place®

Founded in 1987, TPW is a family-owned boutique Real Estate and Property Management company with offices in Manchester, Stratton, and Okemo.

Whether you're looking to buy or sell real estate in Southern Vermont, we have a team of committed Realtors ready to provide you with exceptional service and satisfaction. From luxury resort homes and condos to vacant land parcels, single-family homes, commercial properties and other unique property types, we are committed to guiding both sellers and buyers every step of the way. We are also available to assist with Annual and Seasonal Rentals.

Condominiums, Co-Operatives, Homeowner Associations, Townhouses, and Resort Vacation Properties are all included in the properties services by our Property Management division.

*We are locally owned!*

*We are licensed Realtors!*

*We love where we work, live and play!*

*We look forward to the opportunity to work with and for you!*

We are a one-stop-shop for your Real Estate and Property Management needs. Our highly visible offices are open 7 days a week with phones answered 24 hours a day. We Know Just the Place®!





## FACES OF TRANSFORMATIONAL HIGHER EDUCATION

### Castleton University

Castleton University is small enough to be a community where individuals matter, yet large enough to offer a diverse and challenging curriculum, taught by faculty who are experts in their field. Since first opening its doors in 1787, Castleton has been dedicated to educating future leaders of Vermont and beyond, providing a high-quality education at an affordable price for more than 230 years.

Castleton is committed to elevating the entire Rutland Region as a destination to learn, live, work, and play. With more than 400 community partnerships, the University is developing a workforce that is prepared through a strong liberal arts education and experiential learning through internships,

cooperative education models, clinical placements, research opportunities, and service learning.

With more than 50 clubs, 28 varsity sports competing in the NCAA Division III, thriving fine and performing arts programs, and distinctive conference and events spaces that host nearly 40,000 guests annually, Castleton brings community spirit, entertainment, and engagement opportunities to the region like no one else. Whether you're attending class in-person or online, you're enjoying a beautiful fall day at a Spartan football game, or you're at a wedding under the largest outdoor pavilion in the state, you'll feel right at home at Castleton University.





## FACES OF TRUSTED BRANCH TEAMS

### Edward Jones

When it comes to your financial future, it's important to work with someone who takes time to understand you and your situation. We take a step-by-step approach to identify your goals and develop specific strategies to help you achieve them. Contact an Edward Jones Financial Advisor today and see how personal service can make a difference.

Caitlin Trombetta, Financial Advisor | Cortney Chadurjian, Branch Office Administrator | 170 S Main St, Rutland | 802-747-6907

Reed Wilcox, Financial Advisor | Denise Jenne, Branch Office Administrator | 128 Merchants Row, Rutland | 802-773-9607

Lon Smith, Financial Advisor | Barbara Kallen, Branch Office Administrator | 82 Woodstock Ave, Rutland | 802-773-5992

Jeremy Carroll, Financial Advisor | Kimberly Doane, Branch Office Administrator | 271 N Main St, Rutland | 802-773-7877

Zerihune Finn, Financial Advisor | 107 Bonnet St, Manchester | 802-362-3562





## FACES OF TRUSTED VETERINARY CARE

### Riverside Veterinary Care & Dental Services

If you live in the Rutland or Ludlow area and need a trusted veterinarian to care for your beloved pet-look no further. Riverside has been offering compassionate veterinary care for over 25 years. Our entire staff is dedicated to giving your pet the best quality medical care. Every pet is treated individually and will receive recommendations based on their breed, age and past medical history.

Riverside Veterinary Care & Dental Services is a full service AAHA accredited animal hospital that offers routine medical care, surgical procedures, emergency treatment and comprehensive dental care. Our in hospital diagnostic

laboratory, X-ray and ultrasound equipment allow us to rapidly diagnose medical problems. Veterinarians have advanced dental training which allows us to successfully diagnose and treat canine and feline dental disease. We also have a visiting ultrasound specialist, board-certified surgeon and board-certified dermatologist available for more advanced diagnostics and treatment.

Please visit our website at [riversidevetcare.com](http://riversidevetcare.com) or follow us on Facebook to learn more about us, read reviews or schedule an appointment. At Riverside Veterinary Care, we are dedicated to providing the best care for your best friend.





## FACES OF UBS FINANCIAL SERVICES

### UBS Financial Services

UBS has built its history on over 150 years of being committed to bringing global resources to help our clients with sophisticated, customized solutions to help them achieve their wealth management goals for both themselves and those who mean the most to them. As Financial Advisors, we work to give our clients confidence in reaching their financial goals without taking on unnecessary risk in their investments. At UBS we pride ourselves on knowing our clients and their values. We are a local resource in Rutland, Vermont with global depth. We are there to celebrate weddings, births, graduations, new businesses and retirements while being a resource during job changes, loss of a loved one, business sales and all of life's transitions. We are lucky enough to help our clients navigate this ever-changing landscape. This insight helps us provide personalized and thoughtful investment

advice as we work together through all of life's transitions. Thanks to all who entrust us with this great privilege.

Alicia Munukka- Senior Registered Client Service Associate, Pamela Brileya- Senior Registered Client Service Associate., Jenna Watson-Client Service Associate, Andrea Kelley-Administrative Manager, Brad Miller-Branch Manager, Jessica Anderson-Financial Advisor-Senior Vice President Wealth Management, Margo Jones-Financial Advisor-Account Vice President, Peter Kelley-Financial Advisor- Senior Vice President Wealth Management, Sam Groom-Financial Advisor-Account Vice President, John Hamilton-Financial Advisor-Senior Vice President Wealth Management, Anthony R. Vitagliano-Financial Advisor-Senior Vice President Wealth Management





## FACES OF URGENT CARE

### ClearChoiceMD Urgent Care

ClearChoiceMD Urgent Care is celebrating five years of providing urgent medical care to the Rutland community!

At ClearChoiceMD, it's simple: exceptional and compassionate patient care is at the forefront of our physician owned and operated centers. We are here for you, in your neighborhood, at your convenience. Prompt, professional service from quality providers offering a warm welcome and the care you and your family deserve. We are committed to being your neighborhood access to urgent medical care.

Our urgent care center offers a wide variety of services for urgent, non-life-threatening illnesses and injuries – from colds,

flus, coughs, fevers, rashes, aches, pains and backaches to minor burns and cuts to simple broken bones. Additionally, we offer physicals, vaccinations and occupational health services such as drug testing and DOT physicals. Our state-of-the-art facility has on-site laboratory services and X-ray, as well as prescription medications you can take home.

We are dedicated to offering prompt, professional and quality care for you and your family. Because we operate on a walk-in basis—and are open 8AM – 8PM seven days a week—you can be confident that we'll be here when you need us.





## FACES OF VERMONT LOCAL BANKING

### The Bank of Bennington

A Vermont-based bank, The Bank of Bennington came to Rutland in 2017 opening a branch on Woodstock Avenue. What is special about this bank? First, it is a mutual bank, which means it has no shareholders, only customers to please. As a mutual bank, it cannot be bought. As other banks are merging out of state, The Bank of Bennington remains independent—rooted in Vermont and rooting for Vermont.

What else makes it stand out from the rest? It is dedicated to the communities it serves, and has a mission to help

them grow. The Bank of Bennington works with individuals, businesses, and organizations to encourage economic vitality, help strengthen the arts, and help keep food cupboards stocked.

The Rutland location complements branches in Bennington, Arlington, and Manchester. It is the perfect opportunity to bank local and support the local economy, because at The Bank of Bennington, your money stays here, works here, and that makes a difference.





## FACES OF VERMONT VETERANS' HOME

### Vermont Veterans' Home

The Vermont Veterans' Home is where our nation's Military Heroes live. A big difference between the Vermont Veterans' Home and other retirement/nursing homes are the options available for activities, entertainment, socializing, and education. Our philosophy of patient-centered care extends to the amenities designed for our residents' comfort and stimulation. With Skype carts for family chats, music and memory iPods, a Namaste relaxation room, on-site chapel, trout pond and sports bar, life on the Veterans' Home campus is diverse, enriching and engaging. Most importantly, our staff focuses on each individual and their needs. You will not find a "one-size-fits-all" approach here.





## FACES OF VERMONT VETERANS' HOME

### Vermont Veterans' Home

Situated on 84-acres along the Roaring Branch River in Bennington, the Vermont Veterans' Home features walking paths, gardens, a stocked trout pond and a herd of Fallow Deer. It is a first-class residential and healthcare campus. Natural light-filled corridors lead to lounges with expansive windows and each room has a view of a garden or wooded vista. The decor is warm and appealing and well maintained similar to military spit and polish. Five distinct 'neighborhoods' are set-off from each other, defined by the level of care they offer and their unique features and amenities. Each is a safe and friendly community all its own.





## FACES OF VERMONT'S FIRST INDEPENDENT TRUST COMPANY

### Trust Company of Vermont

The Trust Company of Vermont is a state chartered trust and investment management firm for individuals and families. Headquartered in Brattleboro with offices in Rutland, Burlington, Manchester and St. Albans, the Trust Company was chartered in September 1999 and is Vermont's first independent trust company.

We are devoted to investment management and trust services. The Trust Company is unique among fiduciaries and investment advisors for its combination of independence, local employee ownership, expertise, and approach to maintaining long-term relationships.

The founders of Trust Company of Vermont had simple goals: autonomy, stable long-term relationships, and a commitment to staying in their communities. Thus, the first independent trust company in Vermont was born.

The Trust Company of Vermont was founded as an employee-owned company in part to ensure that both the company and our employees remain part of our local communities and preserve our culture of service. In addition, for many in the investment world, management of assets often becomes just a product, but our service, based on financial security and family goals, focuses well beyond rates of return. Our model is best served by owning the company.

The majority of our staff came to Vermont from other areas of the trust and investment community. What we all have in common is a strong sense of place. Those born and raised in Vermont, and those who by chance or by selection found this place, for all, our place is Vermont. We are proud of our beautiful and historic Rutland office at 23 Court Street. Come in and we will be happy to show you.





## FACES OF WEALTH MANAGEMENT

### Morgan Stanley

Front (l to r) **Barbara Carrara**-Senior Client Service Associate; **Nick Carmolli**-Branch Manager, Financial Advisor; **George Smith**-Financial Advisor; **William Munson**, Financial Advisor, **Robert Stedman**-Financial Advisor; **Christine Corbin**-Portfolio Associate.

You have meaningful goals.  
Our Financial Advisors can help you reach them.  
For over 80 years, we have worked with individuals, families, businesses and institutions—to deliver services and solutions that help build, preserve and manage wealth.

Morgan Stanley Smith Barney LLC. Member SIPC.  
CRC 259003 6/19





## FACES OF WORKFORCE EDUCATION

### Community College of Vermont Workforce Education

The Community College of Vermont is your local source for quality workforce education. Our team will work with you to develop and implement customized solutions designed specifically for the needs of your business and your employees.

From afternoon workshops in computer skills, to credit-bearing courses in medical terminology, CCV can provide the solution you need when you need it. We can design customized trainings, align your needs to an industry credential, or help your employees along a path to degree. Could your business use employees with a stronger set of skills in Customer Service? Do you have managers and supervisors that could use Leadership Training? Is Excel a challenge you'd like help conquering? CCV has you covered.

Building on the successes of its proven credentialing programs in health care, business, and manufacturing, CCV is excited to announce the launch of three new registered apprenticeships in 2019. Apprenticeships will be offered in Medical Assisting, Pharmacy Technician, and Manufacturing Production Technician, and will give hard-working Vermonters the opportunity to earn while they learn.

Consider hosting an apprentice at your business, bringing a customized training to your workplace, or training your incumbent workers in a skill that will make your workplace more efficient. Contact us today at [workforce@ccv.edu](mailto:workforce@ccv.edu).





**HANNOUSH**  
JEWELERS

## FACES OF YOUR FAMILY JEWELER

### Hannoush Jewelers

Since 2000, Hannoush Jewelers has been your local full service family jeweler that you can trust. Plain and simple, our mission is to make our customers happy. Whether it is a simple watch battery, fixing or revamping a family heirloom, or custom designing an elaborate engagement ring, we are thrilled to make it happen for you!

We pride ourselves in our knowledge, experience and customer service. Buying jewelry can be a daunting task to many, but one of our favorite things to do is educate our customers and help guide them through the process

of choosing that perfect piece for their loved one. Making a sale is great, but making your customer feel comfortable and happy with that sale is what matters the most to us.

We are proud to have been voted by the community as the Best Jeweler for the past 9 years running, as well as Best Customer Service for Any Business for the past 5 years. It means so much to us, knowing that our customers love us as much as we love them and appreciate their loyalty. We have the best job in the world. We get to celebrate love every day. How COOL is that??





YOUR LOCAL HOP ENERGY COMPANY!  
get all season comfort with HOP

## FACES OF YOUR FULL-SERVICE ENERGY PROVIDER

### Keyser Energy

Keyser Energy knows, from 100 years of experience, emergencies don't always happen during regular business hours. We mean it when we say we're a full-service energy provider. That's why our customers know we are here day and night, weekends and holidays, 365 days a year.

For that commitment to the Rutland Area we have 26 hardworking Vermonters. Our drivers deliver Fuel and Propane through all weather conditions, certificated Technicians respond to emergency calls during all hours of the day and night. Our office crew greets and helps our customers in three local office - Brandon, Poultney, and Rutland.

We are excited to welcome a new member-Bill Kehoe, Operations Manager to the Keyser Energy Family, your local

HOP branch. Bill comes to us having served as a logistics officer in the US Marine Corps. He has also worked with global relief organizations including USAID and the UN providing logistics and operation support globally. In the private sector he has led logistics and operations efforts at locations throughout the US.

Here is more news! We have moved and combined our Rutland and Proctor office to 77 Grove St. Please stop by Suite G102 to check out our new space. Don't hesitate to call, email, or IM us.

*Thank you, Rutland Region, for your support - Keyser Energy Family*





## FACES OF YOUR LOCAL YOUNG PROFESSIONALS GROUP

### Rutland Young Professionals (RYP)

RYP works to create and promote a vibrant Rutland area for young professionals near and far. Over the past six years, we've fostered growth in the community by connecting like-minded people with one another and with job, volunteer and professional development opportunities.

Each month, we hold a free mixer where we have the chance to connect with each other and hear from local business owners and community leaders. At other times, our members organize meetups where we can casually get together for fun local events and activities.

RYP also values the professional development of its members by offering various learning opportunities and scholarship programs. Each fall we host the Young Professional Summit

of Vermont, a one-day event focused on networking, learning, and acting on issues facing the state's young workforce.

One of RYP's high-impact programs, Let's Dish, aims to help local employers recruit new talent to the Rutland area by having members meet with new or potential employees and share what the Rutland region has to offer.

Throughout our events and programs, our mission remains consistent. We're here to engage the Rutland community, create social and professional networking opportunities and work to build a Rutland area that attracts and retains young professionals. We believe Rutland is an exciting place to live and work and we want to share our enthusiasm to help grow the region.



# MEMBER DIRECTORY

## ACCOUNTING, BOOKKEEPING & TAX PREP

**4 Seasons Accounting, LLC**  
(802) 775-3140  
25 Curtis Ave.  
Rutland, VT 05701  
[www.4seasonsaccounting.com](http://www.4seasonsaccounting.com)

**A.M. Peisch & Company**  
(802) 773-2721  
27 Center St.  
Rutland, VT 05701  
[www.ampeisch.com](http://www.ampeisch.com)

**Bonadio Group**  
(802) 775-8970  
67 Merchants Row  
Rutland, VT 05701  
[www.bonadio.com](http://www.bonadio.com)

**Cavacas Associates**  
(802) 772-7902  
2 Clover Street  
Rutland, VT 05701  
[www.cavacasassociates.com](http://www.cavacasassociates.com)

**Davis & Hodgdon Associates, CPA's PLC**  
(802) 775-7132  
49 North Main Street  
Rutland, VT 05701  
[www.dh-cpa.com](http://www.dh-cpa.com)

**H&R Block**  
(802) 775-5055  
98 Allen Street  
Rutland, VT 05701  
[www.hrblock.com](http://www.hrblock.com)

**McCormack, Guyette & Associates, P.C.**  
(802) 775-3221  
66 Grove Street  
Rutland, VT 05701  
[www.cpa-vermont.com](http://www.cpa-vermont.com)

**O'Brien Shortle Reynolds & Sabotka, PC**  
(802) 773-8344  
54 North Main Street  
Rutland, VT 05701  
[www.vtcpa.com](http://www.vtcpa.com)

**Sharon Stearns CPA PLLC**  
(802) 247-8300  
PO Box 22  
Brandon, VT 05733  
[www.stearnscca.com](http://www.stearnscca.com)

## ADVERTISING & MEDIA

**101 The One Radio**  
(802) 773-9264  
1 Scale Ave. Bld. 18  
Rutland, VT 05701  
[www.101theone.com](http://www.101theone.com)

**Catamount Radio**  
(802) 775-7500  
250 Dorr Drive  
Rutland, VT 05701  
[www.catamountradio.com](http://www.catamountradio.com)

**Comcast Spotlight**  
(802) 448-3443  
299 North Main St.  
Rutland, VT 05701  
[www.comcastspotlight.com/burlington](http://www.comcastspotlight.com/burlington)

**Freedom Publications**  
(802) 388-8458  
58 Maple Street  
Middlebury, VT 05753  
[www.vtphonebook.com/rutland](http://www.vtphonebook.com/rutland)

**Killington TV 14**  
(802) 315-0140  
5465 Route 4  
Killington, VT 05751  
[www.killingtontv.com](http://www.killingtontv.com)

**Rutland Herald**  
(802) 747-6121  
77 Grove Street  
Rutland, VT 05701  
[www.rutlandherald.com](http://www.rutlandherald.com)

**Rutland Magazine**  
(802) 672-2411  
PO Box 264  
Woodstock, VT 05091  
[www.rutlandmagazineonline.com](http://www.rutlandmagazineonline.com)

**Rutland Region Community Television**  
(802) 747-0151  
Howe Center, 1 Scale Ave Suite 108  
Rutland, VT 05701  
[www.peggtv.com](http://www.peggtv.com)

**The Mountain Times**  
(802) 422-2399  
5465 Route 4  
Killington, VT 05751  
[www.mountaintimes.info](http://www.mountaintimes.info)

**Vermont Business Magazine**  
(802) 863-8038  
365 Dorset St.  
South Burlington, VT 05403  
[www.vermontbiz.com](http://www.vermontbiz.com)

**Vermont Public Radio**  
(802) 654-4369  
365 Troy Ave.  
Colchester, VT 05446  
[www.vpr.net](http://www.vpr.net)

**WCAX - TV**  
(802) 310-5326  
65 North Main Street  
Rutland, VT 05701  
[www.wcax.com](http://www.wcax.com)

## AGRICULTURE, FISHING & FORESTRY

**Baird Farm Maple Syrup**  
(802) 483-2963  
65 West Road  
N. Chittenden, VT 05763  
[www.bairdfarm.com](http://www.bairdfarm.com)

**Baker Family Maple**  
(802) 779-4557  
6977 Church St.  
Wallingford, VT 05773

**Green Mountain National Forest**  
(802) 747-6700  
231 N. Main St.  
Rutland, VT 05701  
[www.fs.fed.us/r9/gmfl](http://www.fs.fed.us/r9/gmfl)

**Mendon Mountain Orchards**  
(802) 775-5477  
16 US Route 4  
Mendon, VT 05701  
[www.mendonorchards.com](http://www.mendonorchards.com)

**Rutland County Maple Producers**  
(802) 779-4557  
6977 Church St.  
Wallingford, VT 05773  
[www.facebook.com/rutlandcountymaple](http://www.facebook.com/rutlandcountymaple)

**Timbercraft Forestry**  
(802) 773-0370  
3817 Middle Rd.  
Clarendon, VT 05759  
[www.timbercraftforestry.com](http://www.timbercraftforestry.com)

**Vermont Farmer's Market**  
(802) 683-4606  
P.O. Box 1008  
Rutland, VT 05701  
[www.vtfarmersmarket.org](http://www.vtfarmersmarket.org)

## ARTS, CULTURE & ENTERTAINMENT

**C&C Fireworks**  
(802) 558-0478  
206 US Route 4  
Rutland, VT 05701  
[www.candcfireworks.com](http://www.candcfireworks.com)

**Chaffee Art Center**  
(802) 775-0356  
16 South Main Street  
Rutland, VT 05701  
[www.chaffeeartcenter.org](http://www.chaffeeartcenter.org)

**Hammond Chapman Foundation  
For Yesterday's Living**  
(802) 897-2633  
1633 Route 74  
Shoreham, VT 05770

**Hathaway Farms & Corn Maze**  
(802) 775-2624  
741 Prospect Hill Rd.  
Rutland, VT 05701  
[www.hathawayfarm.com](http://www.hathawayfarm.com)

**Hocus Pocus Magic Show**  
(802) 747-5995  
916 Route 7B Central  
Clarendon, VT 05759  
[www.hocuspocushow.com](http://www.hocuspocushow.com)

**Killington Music Festival**  
(802) 773-4003  
PO Box 386  
Rutland, VT 05701  
[www.killingtonmusicfestival.org](http://www.killingtonmusicfestival.org)

**MC Sounds**  
(802) 342-0533  
Rutland, VT 05701  
[www.mcsounds.com](http://www.mcsounds.com)



# MEMBER DIRECTORY

**Northstar Fireworks**

(802) 229-9690  
2235 VT Route 14 South  
East Montpelier, VT 05651  
[www.northstarfireworks.com](http://www.northstarfireworks.com)

**Rutland County Agricultural Society, Inc.**

(802) 775-5200  
PO Box 10  
Rutland, VT 05701  
[www.vermontstatefair.org](http://www.vermontstatefair.org)

**The Carving Studio & Sculpture Center**

(802) 438-2097  
636 Marble Street  
West Rutland, VT 05777  
[www.carvingstudio.org](http://www.carvingstudio.org)

**The Paramount Theatre**

(802) 775-0570  
30 Center Street  
Rutland, VT 05701  
[www.paramountvt.org](http://www.paramountvt.org)

**Vermont Dining Train**

(908) 688-7277  
PO Box 3552  
Union, NJ 07083  
[www.rails-vt.com](http://www.rails-vt.com)

**Vermont Marble Museum**

(802) 459-2750  
52 Main Street  
Proctor, VT 05765  
[www.vermontmarblemuseum.org](http://www.vermontmarblemuseum.org)

**Wonderfeet Museum**

(802) 282-2678  
11 Center Street  
Rutland, VT 05701  
[www.wonderfeetkidsmuseum.org](http://www.wonderfeetkidsmuseum.org)

## ASSOCIATIONS AND NON PROFITS

**Allen & Edward Gartner Partnership, LLP**

(802) 775-4954  
41 North Street Extension  
Rutland, VT 05701

**Associates for Training and Development**

(802) 524-3200  
3 Champlain Commons Suite 2  
St Albans, VT 05478  
[www.a4td.org](http://www.a4td.org)

**Brandon Chamber of Commerce**

(802) 247-6401  
PO Box 267  
Brandon, VT 05733  
[www.brandon.org](http://www.brandon.org)

**BROC Community Action**

(802) 775-0878  
45 Union Street  
Rutland, VT 05701  
[www.broc.org](http://www.broc.org)

**Cairo Shriners**

(802) 747-3400  
51 Washington Street  
Rutland, VT 05701  
[www.cairoshriners.com](http://www.cairoshriners.com)

**Child First Advocacy Center**

(802) 747-0200  
80 West Street  
Rutland, VT 05701  
[www.childfirstvermont.org](http://www.childfirstvermont.org)

**Downtown Rutland Partnership**

(802) 773-9380  
48 Merchants Row  
Rutland, VT 05701  
[www.downtownrutland.com](http://www.downtownrutland.com)

**Goodwill of the Berkshires & Southern Vermont**

(802) 772-4383  
259 North Main Street  
Rutland, VT 05701  
[www.goodwill-berkshires.org](http://www.goodwill-berkshires.org)

**Green Mountain Human Resource Association**

(802) 776-2157  
c/o Castleton University  
Castleton, VT 05735  
[www.gmhra.shrm.org](http://www.gmhra.shrm.org)

**Homeless Prevention Center**

(802) 775-9286  
56 Howe Street, Bldg. A  
Rutland, VT 05701  
[www.hpcvt.org](http://www.hpcvt.org)

**Killington Pico Area Association**

(802) 422-5722  
2319 US-4  
Killington, VT 05751  
[www.killingtonpico.org](http://www.killingtonpico.org)

**New Story Center**

(802) 775-6788  
PO Box 313  
Rutland, VT 05701  
[www.nscvt.org](http://www.nscvt.org)

**Rutland Community Cupboard**

(802) 747-6119  
65 River Street  
Rutland, VT 05701  
[www.rutlandcommunitycupboard.org](http://www.rutlandcommunitycupboard.org)

**Rutland County Humane Society**

(802) 483-6700  
765 Stevens Road  
Pittsford, VT 05763  
[www.rchsvt.org](http://www.rchsvt.org)

**Rutland County Parent Child Center**

(802) 775-9711  
61 Pleasant Street  
Rutland, VT 05701  
[www.rcpcc.org](http://www.rcpcc.org)

**Rutland Economic Development Corp.**

(802) 773-9147  
67 Merchants Row  
Rutland, VT 05701  
[www.rutlandeconomy.com](http://www.rutlandeconomy.com)

**Rutland Redevelopment Authority**

(802) 775-2910  
1 Strongs Avenue  
Rutland, VT 05701  
[www.rutlandvtbusiness.com](http://www.rutlandvtbusiness.com)

**Rutland Region Workforce Investment Board**

(802) 775-0871  
67 Merchants Row  
Rutland, VT 05701  
[www.rwib.org](http://www.rwib.org)

**Rutland Regional Planning Commission**

(802) 775-0871  
67 Merchants Row  
Rutland, VT 05701  
[www.rutlandrpc.org](http://www.rutlandrpc.org)

**Rutland Rotary South**

PO Box 511  
Rutland, VT 05701  
[www.portal.clubrunner.ca/2956](http://www.portal.clubrunner.ca/2956)

**Salvation Army**

(802) 775-5150  
1 Scale Avenue, Building 12A  
Rutland, VT 05701  
[www.nne.salvationarmy.org/Rutland](http://www.nne.salvationarmy.org/Rutland)

**Southwestern VT Council on Aging**

(802) 786-5990  
143 Maple Street  
Rutland, VT 05701  
[www.svcoa.org](http://www.svcoa.org)

**Teen Challenge Vermont, Rutland**

(802) 635-7807  
197 West Street  
Rutland, VT 05701  
[www.tcvermont.org](http://www.tcvermont.org)

**The Mentor Connector**

(802) 775-3434  
110 Merchants Row, Suite 210  
Rutland, VT 05701  
[www.mentorconnector.com](http://www.mentorconnector.com)

**United Way of Rutland County**

(802) 773-7477  
88 Park Street  
Rutland, VT 05701  
[www.uwrutlandcounty.org](http://www.uwrutlandcounty.org)

**Vermont Symphony Orchestra**

(802) 864-5741  
2 Church Street, Suite 3B  
Burlington, VT 05401  
[www.vso.org](http://www.vso.org)

## ATTORNEYS

**A. Jay Kenlan**

(802) 772-4440  
25 Washington Street  
Rutland, VT 05701

**Cleary Shahi & Aicher PC**

(802) 775-8800  
110 Merchants Row, Suite 3  
Rutland, VT 05701  
[www.vttriallaw.com](http://www.vttriallaw.com)



# MEMBER DIRECTORY

**Eugene Rakow, PC**

(802) 775-0242  
24 Wales Street, Suite 6  
Rutland, VT 05701

**Facey Goss & McPhee, PC.**

(802) 773-3300  
71 Allen Street, Suite 401  
Rutland, VT 05701  
[www.fgmvt.com](http://www.fgmvt.com)

**McCamley & Branchaud, P.C.**

(802) 775-0064  
24 Wales Street, Suite 6  
Rutland, VT 05701  
[www.rutlandlawyers.com](http://www.rutlandlawyers.com)

**McCann Morgan & Getty, PLLC**

(802) 855-8060  
36 Merchants Row  
Rutland, VT 05701  
[www.mmgvtlaw.com](http://www.mmgvtlaw.com)

**Pratt Vreeland, Kennelly, Martin & White**

(802) 775-7141  
64 North Main Street  
Rutland, VT 05701  
[www.vermontcounsel.com](http://www.vermontcounsel.com)

**Ryan Smith & Carbine, Ltd.**

(802) 786-1000  
98 Merchants Row  
Rutland, VT 05701  
[www.rsclaw.com](http://www.rsclaw.com)

## AUTOMOTIVE, AVIATION & MARINE

**Alderman's Chevrolet**

(802) 776-5000  
65 Windcrest Road  
Rutland, VT 05701  
[www.aldermanchevrolet.com](http://www.aldermanchevrolet.com)

**Alderman's Toyota**

(802) 776-6000  
33 Seward Road  
Rutland, VT 05701  
[www.aldermanstoyota.com](http://www.aldermanstoyota.com)

**Brileyas Chrysler Jeep**

(802) 773-3555  
1253 Us Route 7 North  
Rutland, VT 05701  
[www.brileyaschryslerjeep.net](http://www.brileyaschryslerjeep.net)

**Formula Ford Lincoln Mercury**

(802) 773-9168  
4318 Middle Road  
Rutland, VT 05701  
[www.fordvt.com](http://www.fordvt.com)

**Garvey Nissan, Inc.**

(802) 775-2355  
78 Route 7 B Central  
Clarendon, VT 05759  
[www.garveynissan.com](http://www.garveynissan.com)

**Green Mountain Car Rental**

(802) 775-0101  
158 North Main Street  
Rutland, VT 05701  
[www.giancola.biz](http://www.giancola.biz)

**Key Honda**

(802) 773-4600  
211 US Rt 7 South  
Rutland, VT 05701  
[www.keyhondaofrutland.com](http://www.keyhondaofrutland.com)

**Morey Motors**

(802) 747-3283  
One Scale Ave., Unit 53  
Rutland, VT 05701  
[www.facebook.com/Morey-Motors-Inc-340951406006453/](http://www.facebook.com/Morey-Motors-Inc-340951406006453/)

**Mountain View Equipment LLC**

(802) 775-0710  
4300 Middle Road  
Rutland, VT 05701  
[www.mountainviewequip.com](http://www.mountainviewequip.com)

**New England Kenworth**

(802) 725-0533  
1385 US Route 7  
Pittsford, VT 05763  
[www.newenglandkw.com](http://www.newenglandkw.com)

**Parkers Classic Autoworks, Ltd.**

(802) 775-3777  
18A Chaplin Ave.  
Rutland, VT 05701  
[www.parkersauto.com](http://www.parkersauto.com)

**Pittsford Automotive Center**

(802) 483-6736  
4122 US-7  
Pittsford, VT 05763  
[www.pittsfordautocenter.com](http://www.pittsfordautocenter.com)

**Speedi Lube**

(802) 773-4446  
40 North Main Street  
Rutland, VT 05701  
[www.facebook.com/Speedi-Lube-service-970276343048068/](http://www.facebook.com/Speedi-Lube-service-970276343048068/)

**Vianor Tire Center**

(802) 773-3360  
133 Strong's Avenue  
Rutland, VT 05701  
[www.vianor.us](http://www.vianor.us)

**Victory Auto Sales, Inc.**

(802) 773-4326  
417 West Street  
Rutland, VT 05701

## BANKS & CREDIT UNIONS

**Bar Harbor Bank & Trust**

(802) 773-1119  
100 Woodstock Avenue  
Rutland, VT 05701  
[www.bhbt.com](http://www.bhbt.com)

**Berkshire Bank**

(802) 773-5477  
20-22 West Street  
Rutland, VT 05701  
[www.berkshirebank.com](http://www.berkshirebank.com)

**Community Bank**

(802) 747-5000  
286 US Route 7 South  
Rutland, VT 05701  
[www.cbna.com](http://www.cbna.com)

**Credit Union of Vermont**

(802) 773-0027  
2 South Main Street  
Rutland, VT 05701  
[www.cuvermont.com](http://www.cuvermont.com)

**Green Mountain Credit Union**

(802) 776-1142  
3141 Cold River Rd  
Rutland, VT 05701  
[www.greenmountaincu.com](http://www.greenmountaincu.com)

**Heritage Family Credit Union**

(802) 775-4930  
30 Allen Street  
Rutland, VT 05701  
[www.hfcuvt.com](http://www.hfcuvt.com)

**Key Bank**

(802) 773-0610  
80 West Street  
Rutland, VT 05701  
[www.key.com](http://www.key.com)

**NBT Bank**

(802) 747-6982  
122 West Street  
Rutland, VT 05701  
[www.nbtbank.com](http://www.nbtbank.com)

**People's United Bank**

(802) 775-8500  
87 West Street  
Rutland, VT 05701  
[www.peoples.com](http://www.peoples.com)

**TD Bank, N.A.**

(802) 786-4160  
89 Merchants Row  
Rutland, VT 05701  
[www.td.com](http://www.td.com)

**The Bank of Bennington**

(802) 774-5085  
143 Woodstock Avenue  
Rutland, VT 05701  
[thebankofbennington.com](http://thebankofbennington.com)

**VSECU**

(800) 371-5162  
72 Seward Road  
Rutland, VT 05701  
[www.vsecu.com](http://www.vsecu.com)



# MEMBER DIRECTORY

## BUSINESS EQUIPMENT & TELECOMMUNICATIONS

### ADKTechs

(518) 638-2020  
5457 State Route 40  
Argyle, NY 12809  
www.adktechs.com

### Comcast

(800) 266-2278  
299 North Main Street, Suite 116  
Rutland, VT 05701  
www.xfinity.com

### Consolidated Communications

(802) 775-0081  
1431 US Route 7 North  
Rutland, VT 05701  
www.consolidated.com

### SymQuest Group, Inc.

(802) 775-8570  
190 South Main Street, Suite 1  
Rutland, VT 05701  
www.symquest.com/rutland-vt

## CONSTRUCTION, EQUIPMENT & CONTRACTORS

### A. Tedesco Masonry Inc.

(802) 773-8312  
79 Plain Street, Suite #4  
Rutland, VT 05701

### Casella Construction Inc.

(802) 773-0052  
8 US Route 4  
Mendon, VT 05701  
www.casellainc.com

### CDP Electric, Inc.

(802) 483-2121  
PO Box 6450  
Rutland, VT 05701

### Gagnon Lumber

(802) 483-6550  
89 Stevens Road  
Pittsford, VT 05763  
www.gagnonlumber.com

### Gawet Marble & Granite

(802) 773-8868  
805 US-4 BUS  
Center Rutland, VT 05736  
www.gawetmarble.com

### H. Hirschmann, Ltd.

(802) 438-4447  
467 Sheldon Avenue  
West Rutland, VT 05777  
www.hhirschmannltd.com

### Joseph P. Carrara & Sons, Inc.

(802) 775-2301  
167 North Shrewsbury Road  
North Clarendon, VT 05759  
www.jpcarrara.com

### Markowski Excavating, Inc.

(802) 483-6469  
2704 West Creek Road  
Florence, VT 05744  
www.markowskiex.com

### Morton Buildings, Inc.

(802) 468-8700  
36 RT 4A East  
Castleton, VT 05735  
www.mortonbuildings.com

### Paquette Plumbing, LLC

(802) 353-0125  
125 Valley View Drive, Suite #1  
Mendon, VT 05701  
paquetteplumbing.com

### RMG Stone Products Inc.

(802) 468-5636  
680 E Hubbardton Road  
Castleton, VT 05735  
www.rmgstone.com

### Rob Stubbins Electrical & General Cont

(802) 775-1484  
395 US Route 4 East  
Rutland, VT 05701  
www.robstubbinslectrical.com

### Rotella Building Materials Inc.

(802) 775-4383  
325 West Street  
Rutland, VT 05701  
www.rotellakitchenandbath.com

### Russell Construction

(802) 775-3325  
170 South Main Street, Suite 6  
Rutland, VT 05701  
www.jarc.com

### Rutland's Magic Brush Painting

(802) 775-7673  
291 McKinley Avenue  
Rutland, VT 05701  
www.magicbrushpainters.com

### T.J. Phillips & Sons Construction

(802) 446-9040  
188 Haven Hill Road  
Wallingford, VT 05773

### Toolcraft Rental and Sales Center

(802) 775-1808  
144 Granger Street  
Rutland, VT 05701  
www.toolcraft.biz

### Trees, Incorporated

(802) 773-2300  
53 Gleason Road  
Rutland, VT 05701  
www.totaltrees.com

### Vermont Quarries Corp.

(802) 775-1065  
7 US Route 4  
Mendon, VT 05701  
www.vermontquarries.com

### Vermont Roofing Company Inc.

(802) 775-4386  
126 Spruce Street  
Rutland, VT 05701  
www.vermontroofing.com

### VMS Construction

(802) 747-7010  
103 Wales Street  
Rutland, VT 05701  
www.vmsgc.com

### Wright Construction Co. Inc.

(802) 259-2094  
31 Station Road  
Mt. Holly, VT 05758  
www.wrightconstruction.com

## DISTRIBUTORS

### Farrell Distributing

(802) 775-2391  
200 Farrell Road  
Rutland, VT 05701  
www.farrelldistributing.com

### Foley Distributing

(802) 773-3738  
280 Seward Road  
Rutland, VT 05701  
www.foleydistributing.com

## EDUCATION

### Allstate Driving Instruction

(802) 775-9218  
375 Notch Road  
Mendon, VT 05701  
www.allstatevt.com

### Castleton University

(802) 468-1202  
62 Alumni Drive  
Castleton, VT 05735  
www.castleton.edu

### College of St. Joseph

(802) 773-5900  
71 Clement Road  
Rutland, VT 05701  
www.csj.edu

### Community College of Vermont

(802) 786-6996  
60 West Street  
Rutland, VT 05701  
www.ccv.edu

### Little Lambs Early Learning Center

(802) 747-0091  
1 Hillside Road  
Rutland, VT 05701  
www.littlelambsrutland.org

### Rutland Free Library

(802) 773-1860  
10 Court Street  
Rutland, VT 05701  
www.rutlandfree.org



# MEMBER DIRECTORY

**Rutland Public Schools**

(802) 773-1900  
6 Church Street  
Rutland, VT 05701  
[www.rutlandcitypublicschools.org](http://www.rutlandcitypublicschools.org)

**Stafford Technical Center**

(802) 770-1032  
8 Stratton Road  
Rutland, VT 05701  
[www.staffordonline.org](http://www.staffordonline.org)

**Vermont Adult Learning**

(802) 775-0617  
16 Evelyn Street, Suite 101  
Rutland, VT 05701  
[www.vtadultlearning.org](http://www.vtadultlearning.org)

## EMPLOYMENT AND STAFFING

**Adecco NA**

(802) 440-8111  
210 South Street, Suite 5  
Bennington, VT 05201  
[www.adeccousa.com](http://www.adeccousa.com)

**Leddy Group**

(802) 786-2222  
164 Woodstock Avenue  
Rutland, VT 05701  
[www.leddygroup.com](http://www.leddygroup.com)

**U.S. Army Recruiting Station Rutland**

(802) 775-2518  
271 North Main Street  
Rutland, VT 05701  
[www.goarmy.com](http://www.goarmy.com)

**Vermont Department of Labor**

(802) 786-5837  
200 Asa Bloomer Bldg.  
Rutland, VT 05701  
[www.labor.vermont.gov/workforce-development/career-resource-centers/rutland-resource-center](http://www.labor.vermont.gov/workforce-development/career-resource-centers/rutland-resource-center)

**Voc Rehab Vermont**

(802) 786-5866  
190 Asa Bloomer Building  
Rutland, VT 05701  
[www.vocrehab.vermont.gov](http://www.vocrehab.vermont.gov)

**Working Fields**

(802) 348-4610  
The Loft  
110 Merchants Row  
Rutland, VT 05701  
[www.workingfieldsllc.com](http://www.workingfieldsllc.com)

## ENGINEERS

**Criterion-Lalancette & Dudka Engineers**

(802) 747-4535  
Tenneybrook Square, Suite 4  
230 North Main Street  
Rutland, VT 05701  
[www.criterion-lalancette-dudka.com](http://www.criterion-lalancette-dudka.com)

**Engineering Services of Vermont, LLC**

(802) 855-8091  
9 Washington Street  
Rutland, VT 05701  
[www.esvtllc.com](http://www.esvtllc.com)

**Enman\*Kesselring Consulting Engineers, PC**

(802) 775-3437  
61 Prospect Street  
Rutland, VT 05701  
[www.enmankesselringengineers.com](http://www.enmankesselringengineers.com)

**Otter Creek Engineering**

(802) 747-3080  
110 Merchants Row, 4th Floor, Suite 15  
Rutland, VT 05701  
[www.ottercrk.com](http://www.ottercrk.com)

## FINANCIAL ADVISORS

**Edward Jones - Caitlin Trombetta, Financial Advisor**

(802) 747-6907  
170 South Main Street  
Rutland, VT 05701  
[www.edwardjones.com](http://www.edwardjones.com)

**Edward Jones - Jeremy Carroll, Financial Advisor**

(802) 773-7877  
271 North Main Street, Suite 207  
Rutland, VT 05701  
[www.edwardjones.com](http://www.edwardjones.com)

**Edward Jones - Lon Smith, Financial Advisor**

(802) 773-5992  
82 Woodstock Avenue  
Rutland, VT 05701  
[www.edwardjones.com](http://www.edwardjones.com)

**Edward Jones - Reed Wilcox, Financial Advisor**

(802) 773-9607  
128 Merchants Row  
Rutland, VT 05701  
[www.edwardjones.com](http://www.edwardjones.com)

**Edward Jones - Zerihune Finn, Financial Advisor**

(802) 362-3562  
107 Bonnet Street  
Manchester, VT 05255  
[www.edwardjones.com](http://www.edwardjones.com)

**Morgan Stanley**

(802) 775-4371  
90 Merchants Row  
Rutland, VT 05701  
[www.morganstanleybranch.com/rutland](http://www.morganstanleybranch.com/rutland)

**RNL & Associates**

(802) 773-4115  
86 N. Main Street  
Rutland, VT 05701  
[www.rnlpc.com](http://www.rnlpc.com)

**Trust Company of Vermont**

(802) 776-9400  
23 Court Street  
Rutland, VT 05701  
[www.tcvermont.com](http://www.tcvermont.com)

**UBS Financial Services**

(802) 772-3255  
67 Merchants Row  
Rutland, VT 05701  
[www.ubs.com](http://www.ubs.com)

**Vermont Retirement Planners**

(802) 772-7945  
87 North Main Street  
Rutland, VT 05701  
[www.vtretirementplanners.com](http://www.vtretirementplanners.com)

**Wells Fargo Advisors**

(802) 770-1901  
271 North Main Street, Suite 208  
Rutland, VT 05701  
[home.wellsfargoadvisors.com/001\\_RDVT](http://home.wellsfargoadvisors.com/001_RDVT)

## INSURANCE

**Cavalieri Insurance Agency, Inc.**

(802) 773-9999  
51 Merchants Row  
Rutland, VT 05701  
[www.ciavt.com](http://www.ciavt.com)

**Hull Maynard Hersey Agency**

(802) 773-3000  
105 Center Street  
Rutland, VT 05701  
[www.hmhvt.com](http://www.hmhvt.com)

**Ken Nelson Agency**

(802) 770-1751  
187 West Street  
Rutland, VT 05701  
[www.kennelsonagency.com](http://www.kennelsonagency.com)

**Kinney Pike Insurance, Inc.**

(802) 775-2311  
98 Merchants Row  
Rutland, VT 05701  
[www.kinneypike.com](http://www.kinneypike.com)

**Liberty Mutual Insurance**

(802) 747-0600  
170 S. Main Street #102  
Rutland, VT 05701  
[www.libertymutual.com/rrcc](http://www.libertymutual.com/rrcc)

**NFP**

(802) 775-4443  
54 Woodstock Avenue  
Rutland, VT 05701  
[www.nfp.com](http://www.nfp.com)

**Perkins Insurance Agency**

(802) 773-3110  
124 North Main Street  
Rutland, VT 05701  
[www.nationwide.com](http://www.nationwide.com)

**The Richards Group**

(802) 747-6650  
92 Center Street, 2nd floor  
Rutland, VT 05701  
[www.therichardsgrp.com](http://www.therichardsgrp.com)

**Wehse & Kinney Insurance, Inc.**

(802) 775-4343  
1085 US Rt 4 East  
Rutland, VT 05701



# MEMBER DIRECTORY

## FUEL DEALERS/HOME HEATING

### Amerigas

(802) 775-0531  
11 Green Hills Lane  
Rutland, VT 05701  
[www.amerigas.com](http://www.amerigas.com)

### Keyser Energy

(802) 773-2567  
77 Grove Street, Suite G102  
Rutland, VT 05701  
[www.keyserenergy.com](http://www.keyserenergy.com)

### Marcell Oil Company

(802) 775-5050  
740 US Route 7  
Pittsford, VT 05763  
[www.facebook.com/Marcell-Oil-Company-520287161385033/](https://www.facebook.com/Marcell-Oil-Company-520287161385033/)

### Midway Oil Corp.

(802) 775-5534  
217 North Main Street  
Rutland, VT 05701  
[www.midwayoil.biz](http://www.midwayoil.biz)

### Proctor Gas Inc.

(802) 459-3340  
2 Market Street  
Proctor, VT 05765  
[www.proctorgas.com](http://www.proctorgas.com)

### Suburban Energy

(802) 775-2357  
289 Randbury Road  
Rutland, VT 05701  
[www.suburbanpropane.com](http://www.suburbanpropane.com)

## FUNERAL HOMES

### Aldous Funeral Home

(802) 773-6252  
44 North Main Street  
Rutland, VT 05701  
[www.aldousfuneralhome.com](http://www.aldousfuneralhome.com)

### Barnard Funeral Home Inc.

(802) 483-2811  
3186 US Route 7  
Pittsford, VT 05763  
[www.barnardfuneralhome.com](http://www.barnardfuneralhome.com)

### Clifford Funeral Home

(802) 773-3010  
2 Washington Street  
Rutland, VT 05701  
[www.cliffordfuneralhome.com](http://www.cliffordfuneralhome.com)

### Tossing Funeral Home

(802) 773-7633  
39 Washington Street  
Rutland, VT 05701

## GRAPHIC DESIGN, MARKETING & WEBSITES

### Got2Web, LLC

(802) 773-0126  
162 North Main Street  
Rutland, VT 05701  
[www.got2web.com](http://www.got2web.com)

### Green Mountain Marketing & Advertising Inc.

(802) 558-3233  
218 Lakewood Drive  
Killington, VT 05751  
[www.greenmountainmarketingandadvertising.com](http://www.greenmountainmarketingandadvertising.com)

### Lyz Tomsuden, Graphic Designer

(802) 345-8438  
Rutland, VT 05701  
[www.lyztomsuden.com](http://www.lyztomsuden.com)

## HEALTH CARE AND WELLNESS

### At Home Senior Care

(802) 747-3426  
14 South Main Street  
Rutland, VT 05701  
[www.athomeseniors.net](http://www.athomeseniors.net)

### BalanceWorks Orthotic, Pedorthic & Orthopedic Shoe Lab of Vermont

(802) 773-1543  
106 Allen Street  
Rutland, VT 05701  
[www.balanceworks.biz](http://www.balanceworks.biz)

### Bayada Hospice

(802) 282-4122  
190 South Main Street, Suite 2  
Rutland, VT 05701  
[www.bayada.com](http://www.bayada.com)

### ClearChoiceMD Urgent Care

(802) 772-4165  
173 South Main Street  
Rutland, VT 05701  
[www.ccmdcenters.com](http://www.ccmdcenters.com)

### Community Health

(802) 855-2083  
215 Stratton Road  
Rutland, VT 05701  
[www.chcrr.org](http://www.chcrr.org)

### Cornerstone Dentistry

(802) 775-6981  
240 Stratton Road  
Rutland, VT 05701  
[www.cornerstonedentistryvt.com](http://www.cornerstonedentistryvt.com)

### Douglas M. Wilson, O.D., P.C.

(802) 775-9355  
71 Allen Street, Suite 201  
Rutland, VT 05701  
[www.dwilsonod.net](http://www.dwilsonod.net)

### Dr. Richard DelBianco, Optometrist

(802) 773-0634  
69 Allen Street  
Rutland, VT 05701  
[www.visionsourcedrdelbianco.com](http://www.visionsourcedrdelbianco.com)

### Fostering Wellness

(802) 773-8306  
11 Cottage Street  
Rutland, VT 05701  
[www.fosteringwellness.net](http://www.fosteringwellness.net)

### Phoenix Counseling & Wellness PLC

(802) 772-4675  
198 North Main Street, Suite C5  
Rutland, VT 05701  
[www.phoenixcounselingwellness.com](http://www.phoenixcounselingwellness.com)

### Physical Rehabilitation & Health Center

(802) 775-6961  
245 Stratton Road  
Rutland, VT 05701  
[www.rutlandchiropractor.com](http://www.rutlandchiropractor.com)

### PsychCare Network

(802) 773-8722  
Rutland, VT 05701  
[www.psychcarenetwork.org](http://www.psychcarenetwork.org)

### Pyramid Holistic Wellness Center

(802) 775-8080  
120 Merchants Row  
Rutland, VT 05701  
[www.pyramidvt.com](http://www.pyramidvt.com)

### Recovery House, Inc.

(802) 446-2640  
P.O. Box 207  
Wallingford, VT 05773  
[www.recoveryhousevt.org](http://www.recoveryhousevt.org)

### Regional Ambulance Service, Inc.

(802) 773-1746  
275 Stratton Road  
Rutland, VT 05701  
[www.rasvt.com](http://www.rasvt.com)

### Rutland Free Clinic/ Park Street Healthshare, Inc

(802) 775-1360  
145 State Street  
Rutland, VT 05701  
[www.vtccu.org/rutland-free-clinic.html](http://www.vtccu.org/rutland-free-clinic.html)

### Rutland Integrative Health

(802) 776-4901  
26 West Street  
Rutland, VT 05701  
[www.rutlandintegrativehealth.com](http://www.rutlandintegrativehealth.com)

### Rutland Mental Health Services

(802) 775-2381  
PO Box 222  
Rutland, VT 05701  
[www.rmhsccn.org](http://www.rmhsccn.org)

### Rutland Pharmacy

(802) 775-2545  
75 Allen Street  
Rutland, VT 05701  
[www.rutlandpharmacy.com](http://www.rutlandpharmacy.com)

### Rutland Radiologists, Inc.

(802) 747-3620  
PO Box 1839, Station A  
Rutland, VT 05701



# MEMBER DIRECTORY

## **Rutland Regional Medical Center**

(802) 775-7111  
234 Stratton Road  
Rutland, VT 05701  
[www.rrmc.org](http://www.rrmc.org)

## **Rutland Rehab Massage**

(802) 236-7079  
196 Joshua Place  
Rutland, VT 05701  
[www.facebook.com/Rutlandrehabmassage](http://www.facebook.com/Rutlandrehabmassage)

## **The Village at White River Junction**

(802) 295-7500  
129 South Main Street, Suite #3  
White River Junction, VT 05001  
[www.thevillageatwrj.com](http://www.thevillageatwrj.com)

## **Vermont Sports Medicine Center**

(802) 775-1300  
5 Albert Cree Drive  
Rutland, VT 05701  
[www.vermontsportsmedicinecenter.com](http://www.vermontsportsmedicinecenter.com)

## **Vermont Veterans' Home**

(802) 447-6510  
325 North Street  
Bennington, VT 05201  
[www.vvh.vermont.gov](http://www.vvh.vermont.gov)

## **VNA & Hospice of the Southwest Region**

(802) 775-0568  
7 Albert Cree Drive  
Rutland, VT 05701  
[www.vermontvisitingnurses.org](http://www.vermontvisitingnurses.org)

## **INDIVIDUAL**

### **Jerry Hansen**

(802) 770-8448  
Rutland, VT 05701

## **INDUSTRIAL/MANUFACTURING**

### **Carris Reels**

(802) 773-9111  
49 Main Street  
Proctor, VT 05765  
[www.carris.com](http://www.carris.com)

### **Damascus Worldwide**

(800) 451-4167  
194 Seward Road  
Rutland, VT 05701  
[www.damascusgear.com](http://www.damascusgear.com)

### **Ellison Surface Technology**

(802) 855-2913  
106 Innovation Dr.  
North Clarendon, VT 05759  
[www.ellisonsurfacetech.com](http://www.ellisonsurfacetech.com)

### **Foley Brothers Brewing**

(802) 349-3146  
79 Stone Mill Dam RD  
Brandon, VT 05733  
[www.foleybrothersbrewing.com](http://www.foleybrothersbrewing.com)

## **GE Aviation**

(802) 773-9121  
210 Columbian Avenue  
Rutland, VT 05701  
[www.geaviation.com](http://www.geaviation.com)

## **Omya, Inc.**

(802) 770-7500  
Whipple Hollow Road  
Florence, VT 05744  
[www.omya-na.com](http://www.omya-na.com)

## **Westminster Cracker Company, Inc.**

(802) 773-8888  
1 Scale Avenue, Bldg 14, Suite 81  
Rutland, VT 05701  
[www.westminstercrackers.com](http://www.westminstercrackers.com)

## **LODGING, TRAVEL & TOURISM**

### **AAA Northern New England**

(802) 775-1558  
302 US Route 7 South  
Rutland, VT 05701  
[www.northernnewengland.aaa.com](http://www.northernnewengland.aaa.com)

### **Antique Mansion B & B**

(802) 855-8372  
85 Field Ave.  
Rutland, VT 05701  
[www.antiquemansionbb.com](http://www.antiquemansionbb.com)

### **Best Western Inn & Suites**

(802) 773-3200  
5 Best Western Place  
Rutland, VT 05701  
[www.BestWestern.com/rutlandkillington](http://www.BestWestern.com/rutlandkillington)

### **Comfort Inn at Trolley Square**

(802) 775-2200  
19 Allen Street  
Rutland, VT 05701  
[www.comfortinn.com/hotel-rutland-vermont-VT400](http://www.comfortinn.com/hotel-rutland-vermont-VT400)

### **Hampton Inn/Rutland Killington**

(802) 773-9066  
47 Farrell Road  
Rutland, VT 05701  
[www.rutlandhampton.com](http://www.rutlandhampton.com)

### **Holiday Inn, Rutland/Killington**

(802) 775-1911  
476 US Rt 7 South  
Rutland, VT 05701  
[www.hivermont.com](http://www.hivermont.com)

### **Marble Mansion Inn**

(802) 265-4556  
12W Park Place  
Fair Haven, VT 05743  
[www.marblemansioninn.com](http://www.marblemansioninn.com)

### **Mendon Mountain Orchards**

(802) 775-5477  
16 US Route 4  
Mendon, VT 05701  
[www.mendonorchards.com](http://www.mendonorchards.com)

## **Quality Inn**

(802) 773-3361  
253 South Main Street  
Rutland, VT 05701  
[www.choicehotels.com/vermont/rutland/quality-inn-hotels/vt068](http://www.choicehotels.com/vermont/rutland/quality-inn-hotels/vt068)

## **Red Clover Inn**

(802) 775-2290  
54 Red Clover Lane  
Mendon, VT 05701  
[www.redcloverinn.com](http://www.redcloverinn.com)

## **Rodeway Inn**

(802) 775-2575  
138 North Main Street  
Rutland, VT 05701  
[www.choicehotels.com/hotel/vt041](http://www.choicehotels.com/hotel/vt041)

## **MARKETS, DELIS & CATERING**

### **East Creek Catering**

(802) 775-0133  
80 Belden Road, #6  
Rutland, VT 05701  
[www.eastcreekcatering.com](http://www.eastcreekcatering.com)

### **Gill's Delicatessen**

(802) 773-7414  
68 Strongs Avenue  
Rutland, VT 05701  
[www.gillsdeli.com](http://www.gillsdeli.com)

### **Kamuda's Country Market**

(802) 483-2361  
861 Arch Street  
Pittsford, VT 05763  
[www.facebook.com/Kamudas](http://www.facebook.com/Kamudas)

### **Maple Leaf Gifts & Wine**

(802) 772-4642  
170 Woodstock Avenue  
Rutland, VT 05701  
[www.facebook.com/mapleleafgiftsandwine](http://www.facebook.com/mapleleafgiftsandwine)

### **The Market On West Street**

(802) 499-8180  
36 West Street  
Proctor, VT 05765  
[www.facebook.com/TheMarketOnWest](http://www.facebook.com/TheMarketOnWest)

### **The Vermont Butcher Shop**

(802) 776-4005  
180 South Main Street  
Rutland, VT 05701  
[www.thevermontbutchershop.com](http://www.thevermontbutchershop.com)

### **Waffle Cabin**

(781) 910-6220  
20 Moonbrook Drive  
Rutland, VT 05701  
[www.wafflecabin.com](http://www.wafflecabin.com)

## **MUNICIPAL**

### **City of Rutland**

(802) 773-1800  
52 Washington Street  
Rutland, VT 05701  
[www.rutlandcity.org](http://www.rutlandcity.org)



# MEMBER DIRECTORY

## **Rutland County Sheriff's Department**

(802) 775-8002  
88 Grove Street  
Rutland, VT 05701  
[www.rutlandsheriff.net](http://www.rutlandsheriff.net)

## **Town of Proctor**

(802) 459-3333  
45 Main Street  
Proctor, VT 05765  
[www.proctorvermont.com](http://www.proctorvermont.com)

## **Town of Rutland**

(802) 773-2528  
181 Business Route 4  
Rutland Town, VT 05701  
[www.utlandtown.com](http://www.utlandtown.com)

## **Town of West Rutland**

(802) 438-2263  
35 Marble Street  
West Rutland, VT 05777  
[www.westrutlandtown.com](http://www.westrutlandtown.com)

## **PERSONAL SERVICES & CARE**

### **Adam & Eve Hair Designs**

(802) 773-1155  
122 Woodstock Avenue  
Rutland, VT 05701  
[www.facebook.com/judybombhair](http://www.facebook.com/judybombhair)

### **Blush Salon and Beauty Lounge**

(802) 855-8722  
60 Center Street  
Rutland, VT 05701  
[www.blushsalonandbeautylounge.com](http://www.blushsalonandbeautylounge.com)

### **Henry's Barber Shop**

(802) 773-6821  
66 Williams Street  
Rutland, VT 05701  
[www.henrysbarbershop.com](http://www.henrysbarbershop.com)

### **Joy of Nails**

(802) 775-2917  
165 Woodstock Ave.  
Rutland, VT 05701

### **Shear Heaven Salon & Day Spa**

(802) 773-8880  
168 North Main Street  
Rutland, VT 05701  
[www.shearheavenvt.com](http://www.shearheavenvt.com)

### **Sport Clips**

(802) 855-8384  
474 Holiday Drive  
Rutland, VT 05701  
[www.haircutmenrutlandvt.com](http://www.haircutmenrutlandvt.com)

### **Supercuts**

(802) 776-4958  
306 South Main Street  
Rutland, VT 05701  
[www.supercuts.com](http://www.supercuts.com)

## **PETS & VETERINARY**

### **Clarendon Animal Clinic**

(802) 775-4333  
548 Rte. 7B N  
North Clarendon, VT 05759  
[www.clarendonanimal.com](http://www.clarendonanimal.com)

### **Head To Tail**

(802) 772-4556  
144 Grove Street  
Rutland, VT 05701  
[www.headtotailvermont.com](http://www.headtotailvermont.com)

### **Riverside Veterinary Care**

(802) 773-4771  
159 River Street  
Rutland, VT 05701  
[www.riversidevetcare.com](http://www.riversidevetcare.com)

### **Rutland Veterinary Clinic & Surgical Ctr.**

(802) 773-2779  
90 East Pittsford Road  
Rutland, VT 05701  
[www.rutlandvet.com](http://www.rutlandvet.com)

### **The Pet Cage**

(802) 786-0684  
97 Crescent Street  
Rutland, VT 05701

### **The Upbeat K9**

(802) 855-8025  
2631 North Grove Street  
Rutland, VT 05701  
[www.theupbeatk9.com](http://www.theupbeatk9.com)

## **PHOTOGRAPHY**

### **Scott Herdling Photography**

(802) 249-1455  
Proctor, VT 05765  
[www.scottherdling.com](http://www.scottherdling.com)

### **Vibe Portrait Art**

(802) 773-8480  
23 Washington Street  
Rutland, VT 05701  
[www.vibeporraitart.com](http://www.vibeporraitart.com)

## **PRINTING, PUBLISHING, AND PROMOTIONAL ITEMS**

### **Awesome Graphics, Inc.**

(802) 773-6143  
77 Woodstock Avenue  
Rutland, VT 05701  
[www.awesomegraphics.com](http://www.awesomegraphics.com)

### **Grand Slam Signs, LLC**

(802) 310-9102  
PO Box 6017  
Rutland, VT 05702-6017  
[www.grandslamsigns.com](http://www.grandslamsigns.com)

### **Green Screen Graphics**

(802) 773-0683  
7 Pine Street  
Rutland, VT 05701  
[www.greenscreengraphics.com](http://www.greenscreengraphics.com)

### **IBF Solutions**

(802) 773-8620  
1 Scale Ave #14  
Rutland, VT 05701  
[www.ibfsolutions.com](http://www.ibfsolutions.com)

### **Initial Ideas, Inc.**

(802) 773-6310  
142 West Street  
Rutland, VT 05701  
[www.initialideasinc.com](http://www.initialideasinc.com)

### **Quickprint of Rutland**

(802) 775-1029  
414 Quality Lane  
Rutland, VT 05701  
[www.quickprintvt.com](http://www.quickprintvt.com)

### **SPC Print Integrated**

(802) 886-2201  
19 Precision Drive  
North Springfield, VT 05150  
[www.springfieldprinting.com](http://www.springfieldprinting.com)

### **The Graphic Edge**

(802) 855-8840  
155 Seward Road  
Rutland, VT 05701  
[www.thegraphicedge.com](http://www.thegraphicedge.com)

### **Triller Print Source & Services**

(802) 773-4080  
25 Curtis Avenue  
Rutland, VT 05701  
[www.trillerprintsource.com](http://www.trillerprintsource.com)

### **Tuttle Printing & Engraving**

(800) 776-7682  
414 Quality Lane  
Rutland, VT 05701  
[www.tuttleprinting.com](http://www.tuttleprinting.com)

## **PROPERTY MANAGEMENT/ LANDSCAPING**

### **Carpenter & Costin**

(802) 775-5686  
84 Deere Lane  
Pittsford, VT 05763  
[www.carpentercostin.com](http://www.carpentercostin.com)

### **Gauthier Home Services, Inc.**

(802) 797-8269  
32 Clarendon Avenue  
West Rutland, VT 05777  
[www.gauthierhomeservices.com](http://www.gauthierhomeservices.com)

### **Intrinsic Property Services**

(802) 558-1545  
217 Mussey Street  
Rutland, VT 05701  
[www.intrinsicps.com](http://www.intrinsicps.com)

### **Pratico's Landscaping & Fence Company**

(802) 775-4382  
349 Route 7 North  
Rutland, VT 05701  
[www.praticos.com](http://www.praticos.com)



# MEMBER DIRECTORY

## REAL ESTATE & APPRAISERS

### **Alison McCullough Real Estate**

(802) 747-4531  
29 Center Street, Unit 1  
Rutland, VT 05701  
[www.alisonmcculloughrealestate.com](http://www.alisonmcculloughrealestate.com)

### **Ansin Consulting Group LLC**

(978) 660-7001  
17 Bryant Road  
Lexington, MA 02420

### **Ault Commercial Realty, Inc.**

(802) 773-0600  
PO Box 6306  
Rutland, VT 05701  
[www.aultcommercial.com](http://www.aultcommercial.com)

### **Blue Ridge Real Estate**

(802) 747-4006  
116 North Main Street  
Rutland, VT 05701  
[www.blueridgevt.com](http://www.blueridgevt.com)

### **Central Vermont Property Valuation, PC**

(802) 775-0255  
264 Grove Street  
Rutland, VT 05701

### **Century 21-Premier Properties**

(802) 775-5565  
210 South Main Street  
Rutland, VT 05701  
[www.rutlandVermontRealEstate.com](http://www.rutlandVermontRealEstate.com)

### **Chris Fucci Associates LTD**

(802) 747-0000  
230 West Street  
Rutland, VT 05701  
[www.fucciassociates.com](http://www.fucciassociates.com)

### **Four Seasons Sotheby's International Real**

(802) 774-7007  
85 North Main Street  
Rutland, VT 05701  
[www.fourseasonssir.com](http://www.fourseasonssir.com)

### **Franzoni Real Estate Co.**

(802) 772-4509  
9 Center Street  
Rutland, VT 05701  
[www.franzonirealty.com](http://www.franzonirealty.com)

### **Giancola Construction & Real Estate**

(802) 773-6251  
140 Granger Street  
Rutland, VT 05701  
[www.Giancola.biz](http://www.Giancola.biz)

### **Housing Trust of Rutland County**

(802) 775-3139  
13 Center Street, 2nd Floor  
Rutland, VT 05701  
[www.housingrutland.org](http://www.housingrutland.org)

### **K & V Properties Inc.**

(802) 775-7722  
49 Wales Street  
Rutland, VT 05701

### **Maples Senior Living Community**

(802) 776-1001  
5 General Wing Road  
Rutland, VT 05701  
[www.summitpmg.com/communities/maples-senior-living](http://www.summitpmg.com/communities/maples-senior-living)

### **Mecier Appraisal Services**

(802) 773-2404  
174 Tower Lane  
West Rutland, VT 05777  
[www.centralvtappraisers.com](http://www.centralvtappraisers.com)

### **MKF Properties/The Loft**

(802) 747-6381  
P.O. Box 99  
Rutland, VT 05701  
[www.mkfpropertiesvt.com](http://www.mkfpropertiesvt.com)

### **RE/MAX Summit**

(802) 772-0670  
1360 US Route 4  
Mendon, VT 05701  
[www.vtsummitre.com](http://www.vtsummitre.com)

### **Rutland Housing Authority**

(802) 775-2926  
5 Tremont Street  
Rutland, VT 05701  
[www.rhvt.org](http://www.rhvt.org)

### **The Fucci Company Inc.**

(802) 773-9107  
6 Regency Manor, Suite 1  
Rutland, VT 05701  
[www.thefuccicompany.com](http://www.thefuccicompany.com)

### **TPW Real Estate**

(802) 342-1230  
4903 Main Street  
Manchester Center, VT 05255  
[www.tpwrealestate.com](http://www.tpwrealestate.com)

### **Watson Realty & Associates PLC**

(802) 773-3500  
182 Woodstock Avenue  
Rutland, VT 05701  
[www.vtwatsonrealty.com](http://www.vtwatsonrealty.com)

### **Yeager Family Partners**

(734) 276-3659  
38 Kendall Avenue  
Rutland, VT 05701

## RESTAURANTS AND CONFERENCE CENTERS

### **Applebee's Grill & Bar**

(802) 747-7700  
225 Woodstock Avenue  
Rutland, VT 05701  
[www.applebees.com](http://www.applebees.com)

### **Big Lenny's Inside Job**

(802) 236-1775  
56 Strongs Avenue  
Rutland, VT 05701  
[www.biglennys.com](http://www.biglennys.com)

### **Brix Bistro**

(802) 776-4175  
118 Merchants Row  
Rutland, VT 05701  
[www.brixbistro.com](http://www.brixbistro.com)

### **Casey's Caboose**

(802) 422-3795  
1930 Killington Road  
Killington, VT 05751  
[www.caseyscaboose.com](http://www.caseyscaboose.com)

### **Domino's Pizza**

(802) 775-0044  
24 Wales Street  
Rutland, VT 05701  
[www.dominos.com](http://www.dominos.com)

### **Franklin Conference Center**

(802) 773-0045  
1 Scale Ave  
Rutland, VT 05701  
[www.franklinconferencecenter.com](http://www.franklinconferencecenter.com)

### **Franklin's Restaurant**

(802) 459-3320  
25 North Street  
Proctor, VT 05765  
[www.franklinsinproctor.com](http://www.franklinsinproctor.com)

### **Ground Round Grill & Bar**

(802) 773-2828  
559 US Rt. 7 South  
Rutland, VT 05701  
[www.groundround.com](http://www.groundround.com)

### **Hop'n Moose Brewing Co.**

(802) 775-7063  
41 Center Street  
Rutland, VT 05701  
[www.hopnmoose.com](http://www.hopnmoose.com)

### **Johnny Boys Pancake House**

(802) 855-8043  
182 US Route 4 East  
Rutland, VT 05701  
[www.johnnyboyspancakehouse.com](http://www.johnnyboyspancakehouse.com)

### **Little Harry's**

(802) 747-4848  
121 West Street  
Rutland, VT 05701  
[www.littleharrys.com](http://www.littleharrys.com)

### **Mama T's Country Kitchen**

(802) 775-9902  
205 US Route 4 East  
Rutland, VT 05701  
[www.mamatscountrykitchen.com](http://www.mamatscountrykitchen.com)

### **Maxie's Deli**

(802) 775-2007  
93 State Street  
Rutland, VT 05701

### **McDonald's**

(802) 747-3365  
60 Center Street, #6  
Rutland, VT 05701



# MEMBER DIRECTORY

## **Ninety Nine Restaurant & Pub**

(802) 775-9288  
315 South Main Street  
Rutland, VT 05701  
[www.99restaurants.com](http://www.99restaurants.com)

## **Peppino's Ristorante Italiano**

(802) 422-9517  
747 Killington Rd  
Killington, VT 05751  
[www.peppinosvt.com](http://www.peppinosvt.com)

## **Roots The Restaurant**

(802) 747-7414  
55 Washington Street  
Rutland, VT 05701  
[www.rootsrutland.com](http://www.rootsrutland.com)

## **Seward's Family Restaurant**

(802) 773-2738  
224 North Main Street  
Rutland, VT 05701

## **Southside Steakhouse**

(802) 772-7556  
170 South Main Street  
Rutland, VT 05701  
[www.southsidesteakhouse.com](http://www.southsidesteakhouse.com)

## **Sugar and Spice**

(802) 773-7832  
43 Route 4 East  
Mendon, VT 05701  
[www.vtsugarandspice.com](http://www.vtsugarandspice.com)

## **Ted's Pizza Shop**

(802) 773-6368  
91 State Street  
Rutland, VT 05701  
[www.tedspizzavt.com](http://www.tedspizzavt.com)

## **The Bakery**

(802) 775-3220  
122 West Street  
Rutland, VT 05701  
[www.thebakeryrutland.com](http://www.thebakeryrutland.com)

## **The Draught Room**

(802) 855-8709  
46 Diamond Run Mall Place  
Rutland, VT 05701  
[www.draughtroomvt.com](http://www.draughtroomvt.com)

## **The Sandwich Shoppe**

(802) 773-2580  
56 1/2 Merchants Row  
Rutland, VT 05701  
[www.facebook.com/The-Sandwich-Shoppe-176638942349221/](http://www.facebook.com/The-Sandwich-Shoppe-176638942349221/)

## **Vermont Taphouse**

(802) 775-0000  
120 South Main Street  
Rutland, VT 05701  
[www.vermonttaphouserutland.com](http://www.vermonttaphouserutland.com)

## **RETAIL**

### **Allen Pools & Spa**

(802) 775-5952  
1901 US Route 4  
Mendon, VT 05701  
[www.allenpools-spas.com](http://www.allenpools-spas.com)

### **AT&T Mobility**

(802) 342-2865  
474 Holiday Drive  
Rutland, VT 05701  
[www.att.com](http://www.att.com)

### **Bead Warehouse**

(802) 775-3082  
Mendon, VT 05701  
[www.beadwarehouse.com](http://www.beadwarehouse.com)

### **Bennington Furniture**

(802) 773-2703  
17 Business Route 4  
Rutland, VT 05701  
[www.benningtonfurniture.com](http://www.benningtonfurniture.com)

### **Best Appliance & Kitchens**

(802) 773-4292  
120 Woodstock Avenue  
Rutland, VT 05701  
[www.bestappliance.biz](http://www.bestappliance.biz)

### **Carpet King of Vermont**

(802) 438-2077  
245 Marble Street  
West Rutland, VT 05777  
[www.carpetkingofvt.com](http://www.carpetkingofvt.com)

### **Carpet Warehouse, Inc.**

(802) 747-3314  
164 US Rt 4 East  
Rutland, VT 05701  
[www.carpetwarehousevt.com](http://www.carpetwarehousevt.com)

### **Col Cycling**

(802) 417-1857  
140 North Main Street  
Rutland, VT 05701  
[www.facebook.com/colcycling](http://www.facebook.com/colcycling)

### **Diamond Run Mall**

(802) 773-1145  
#1 Diamond Run Mall  
46 Diamond Run Mall Place  
Rutland, VT 05701  
[www.diamondrunmall.com](http://www.diamondrunmall.com)

### **Diamonds and More**

(802) 773-7277  
7 Center Street  
Rutland, VT 05701  
[www.diamondsandmore.us](http://www.diamondsandmore.us)

### **Exotica Flowers**

(802) 773-0004  
133 Woodstock Avenue  
Rutland, VT 05701  
[www.exoticaflowerzrutland.com](http://www.exoticaflowerzrutland.com)

### **Frank Webb Home**

(802) 775-1022  
3089 Cold River Road  
Rutland, VT 05701  
[www.frankwebb.com](http://www.frankwebb.com)

### **Grow Vermont LLC**

(802) 779-6237  
38 Wales Street  
Rutland, VT 05701  
[www.facebook.com/Grow-Vermont-244410319430857](http://www.facebook.com/Grow-Vermont-244410319430857)

### **GT Outdoor Power Equipment**

(802) 773-2709  
70 1/2 Park Street  
Rutland, VT 05701  
[www.garlandsfarmandgarden.com](http://www.garlandsfarmandgarden.com)

### **Hannoush Jewelers**

(802) 773-4455  
152 Woodstock Avenue  
Rutland, VT 05701  
[www.hannoush.com](http://www.hannoush.com)

### **Home Depot**

(802) 786-6900  
299 U.S. RT 4 East  
Rutland, VT 05701  
[www.homedepot.com](http://www.homedepot.com)

### **Interstate All Battery Center Of Rutland**

(802) 786-9075  
71 River Street  
Rutland, VT 05701  
[www.interstatebatteries.com](http://www.interstatebatteries.com)

### **LaValley Building Supply**

(802) 775-0834  
48 Windcrest Road  
Rutland, VT 05701  
[www.lavalleys.com](http://www.lavalleys.com)

### **Noble Ace Hardware**

(802) 773-2758  
251 North Main Street  
Rutland, VT 05701  
[www.nobleace.com](http://www.nobleace.com)

### **Park Place Florist & Garden Center, Inc.**

(802) 775-2626  
72 Park Street  
Rutland, VT 05701  
[www.parkplacefloriststreetnet](http://www.parkplacefloriststreetnet)

### **Phoenix Books Rutland**

(802) 855-8078  
2 Center Street  
Rutland, VT 05701  
[www.phoenixbooks.biz](http://www.phoenixbooks.biz)

### **Poultney Pools**

(802) 438-2500  
551 Rutland Road  
West Rutland, VT 05777  
[www.poultneypools.com](http://www.poultneypools.com)

### **Rutland Appliances**

(802) 747-8830  
439 US Route 7 N  
Rutland, VT 05701  
[www.rutlandappliance.com](http://www.rutlandappliance.com)

### **Sandri Sunoco #281**

(802) 747-0209  
278 South Main Street  
Rutland, VT 05701  
[www.sandri.com](http://www.sandri.com)



# MEMBER DIRECTORY

**Sensible Shoe**

(802) 773-7515  
171 US Route 4 E  
Rutland, VT 05701  
[www.sensibleshoe.com](http://www.sensibleshoe.com)

**Sherwin Williams**

(802) 773-9212  
76 Woodstock Avenue  
Rutland, VT 05701  
[www.sherwin-williams.com](http://www.sherwin-williams.com)

**Staples - The Office Superstore**

(802) 773-0116  
317 South Main Street  
Rutland, VT 05701  
[www.staples.com](http://www.staples.com)

**Stewart's Shops**

(802) 775-7948  
8062 Route 40  
Harford, NY 12838  
[www.stewartsshops.com](http://www.stewartsshops.com)

**The Emporium, Tobacco & Gifts**

(802) 775-2552  
131 Strongs Avenue  
Rutland, VT 05701  
[www.emporiumvt.com](http://www.emporiumvt.com)

**The Party Store**

(802) 773-3155  
129 Strongs Avenue  
Rutland, VT 05701  
[www.thepartystores.com](http://www.thepartystores.com)

**The Sparkle Barn**

(802) 446-2044  
1509 US 7 South  
Wallingford, VT 05773  
[www.thesparklebarnshop.com](http://www.thesparklebarnshop.com)

**Timco Jewelers & Goldsmiths**

(802) 773-3377  
59 Center Street  
Rutland, VT 05701  
[www.timcojewelers.com](http://www.timcojewelers.com)

**Vermont Bedrooms**

(802) 775-5250  
159 US Route 4 East  
Rutland Town, VT 05701  
[www.vermontbedrooms.com](http://www.vermontbedrooms.com)

## SERVICES

**Atomic Professional Audio, Inc.**

(802) 775-5550  
364A Innovation Drive  
North Clarendon, VT 05759  
[www.atomicproaudio.com](http://www.atomicproaudio.com)

**Business Coach Vermont**

(802) 776-8922  
PO Box 246  
Killington, VT 05751  
[www.businesscoachvt.com](http://www.businesscoachvt.com)

**Celebration Rentals**

(802) 247-0002  
P.O. Box 387  
Brandon, VT 05733  
[www.celebrateinvermont.com](http://www.celebrateinvermont.com)

**Commercial Building Services**

(802) 773-7765  
PO Box 6042  
Rutland, VT 05701

**Disaster Recovery Inc.**

(802) 483-9552  
3162 US Route 7  
Pittsford, VT 05763  
[www.disasterrecoveryinc.com](http://www.disasterrecoveryinc.com)

**Foley Services**

(800) 639-0110  
133 State Street  
Rutland, VT 05701  
[www.foleylinen.com](http://www.foleylinen.com)

**HR Acquired**

(802) 558-6053  
Center Rutland, VT 05736  
[www.hracquired.com](http://www.hracquired.com)

**Long Trail Tattoo & Piercing**

(802) 747-7000  
476 Route 7B North  
North Clarendon, VT 05759  
[www.facebook.com/LongTrailTattoo](http://www.facebook.com/LongTrailTattoo)

**Page's Full Service Concierge & Cleaning**

(802) 258-0701  
64 Lafayette Street  
Rutland, VT 05701  
[www.facebook.com/Pagesfullserviceconciergeandcleaning](http://www.facebook.com/Pagesfullserviceconciergeandcleaning)

**Pockette Pest Control**

(802) 465-8530  
PO Box 357  
Brandon, VT 05733  
[www.pockettepestcontrol.com](http://www.pockettepestcontrol.com)

**Robert C. Williams Associates, P.C.**

(802) 746-8917  
810 Upper Michigan Road  
Pittsfield, VT 05762  
[wwwr.cwa.com](http://wwwr.cwa.com)

**Servpro of Bennington & Rutland Counties**

(802) 375-1500  
191 Millbrook Road  
Sunderland, VT 05250  
[www.servprobenningtonrutlandcounties.com](http://www.servprobenningtonrutlandcounties.com)

**The Royal Group Inc.**

(802) 773-3313  
150 Woodstock Avenue  
Rutland, VT 05701  
[www.theroyalgroupinc.com](http://www.theroyalgroupinc.com)

**The Vermont Country Store**

(802) 824-3184  
657 Main Street  
Weston, VT 05161  
[www.vermontcountrystore.com](http://www.vermontcountrystore.com)

**UniFirst Corp.**

(603) 448-0011  
125 Etna Road  
Lebanon, NH 03766  
[www.unifirststreetcom](http://www.unifirststreetcom)

**United States Postal Service**

(802) 773-0301  
151 West Street  
Rutland, VT 05701  
[www.usps.gov](http://www.usps.gov)

## SPORTS & RECREATION

**Adaptive Martial Arts Association**

(802) 747-8184  
PO Box 225  
Pittsford, VT 05763  
[www.adaptivemartialarts.com](http://www.adaptivemartialarts.com)

**Born To Dance Studio**

(802) 770-8694  
29 Center Street  
Rutland, VT 05701  
[www.facebook.com/Born-to-Dance-studio-495992147606688/](http://www.facebook.com/Born-to-Dance-studio-495992147606688/)

**Cobra Gymnastics & Dance Center**

(802) 772-7011  
56 Howe Street, Bld. H #10  
Rutland, VT 05701  
[www.cobravt.com](http://www.cobravt.com)

**Green Mountain National Golf Course**

(802) 422-4653  
476 Barrows Towne Road  
Killington, VT 05751  
[www.gmngc.com](http://www.gmngc.com)

**Green Mountain Storyville**

(802) 558-4924  
46 Diamond Run Place  
Rutland, VT 05701  
[www.facebook.com/greenmountainstoryville](http://www.facebook.com/greenmountainstoryville)

**Killington /Pico Ski Resort Partners, LLC**

(802) 422-6201  
4763 Killington Road  
Killington, VT 05751  
[www.killington.com](http://www.killington.com)

**MACC LLC**

(802) 247-3611  
224 Town Farm Road  
Brandon, VT 05733  
[www.neshobe.com](http://www.neshobe.com)

**Mendon Mini Golf & Snack Bar**

(802) 776-4921  
2556 US Route 4  
Mendon, VT 05701  
[www.mendonminigolf.com](http://www.mendonminigolf.com)

**Otter Creek Fun Center**

(802) 293-9200  
1800 Route 7  
Danby, VT 05739  
[www.ottercreekfuncenter.com](http://www.ottercreekfuncenter.com)



# MEMBER DIRECTORY

## **Proctor Pittsford Country Club**

(802) 483-9379  
311 County Club Drive  
Pittsford, VT 05763  
[www.proctor-pittsford.com](http://www.proctor-pittsford.com)

## **Rutland Bowlerama**

(802) 773-7707  
158 South Main Street, Suite 1  
Rutland, VT 05701  
[www.rutlandbowlerama.com](http://www.rutlandbowlerama.com)

## **Rutland Country Club**

(802) 773-7061  
275 Grove Street  
Rutland, VT 05701  
[www.rutlandcountryclub.com](http://www.rutlandcountryclub.com)

## **Stonehedge Golf & FootGolf Course**

(802) 773-2666  
216 Squire Road  
North Clarendon, VT 05759  
[www.stonehedgegolf.com](http://www.stonehedgegolf.com)

## **Stonehedge Indoor Golf**

(802) 779-9595  
172 South Main Street  
Rutland, VT 05701  
[www.stonehedgeindoorgolf.com](http://www.stonehedgeindoorgolf.com)

## **The Gymnasium**

(802) 773-5333  
11 Cottage Street  
Rutland, VT 05701  
[www.thegymnasium.net](http://www.thegymnasium.net)

## **True Yoga Vermont**

(802) 772-7728  
22 Wales Street  
Rutland, VT 05701  
[www.trueyogavermont.com](http://www.trueyogavermont.com)

## **Vermont Adaptive Ski & Sports**

(802) 786-4991  
PO Box 139  
Killington, VT 05751  
[www.vermontadaptive.org](http://www.vermontadaptive.org)

## **Vermont Brew Arena Football, Inc.**

(518) 248-4482  
1127 North Avenue, Suite 27 #213  
Burlington, VT 05408  
[www.vermontbrewfootball.com](http://www.vermontbrewfootball.com)

## **Vermont Martial Arts Academy**

(802) 773-1373  
12 Merchants Row  
Rutland, VT 05701  
[www.vermontmarblemuseum.org](http://www.vermontmarblemuseum.org)

## **Vermont Sport & Fitness**

(802) 775-9916  
40 Curtis Avenue  
Rutland, VT 05701  
[www.vermontsportandfitness.com](http://www.vermontsportandfitness.com)

## **TRANSPORTATION**

### **Cape Air**

(800) 352-0714  
1002 Airport Rd.  
North Clarendon, VT 05759  
[www.capeair.com](http://www.capeair.com)

### **Columbia Air Services - Rutland, LLC**

(802) 773-3348  
1004 Airport Road  
North Clarendon, VT 05759  
[www.columbiaairservices.com](http://www.columbiaairservices.com)

### **Laz Parking**

(802) 855-8710  
102 West Street  
Rutland, VT 05701  
[www.lazparking.com](http://www.lazparking.com)

### **Marble Valley Regional Transit/The Bus**

(802) 773-3244  
158 Spruce Street  
Rutland, VT 05701  
[www.thebus.com](http://www.thebus.com)

### **Premier Coach Co. Inc./VT Translines**

(802) 655-4456  
946 Route 7 South  
Milton, VT 05468  
[www.VTtranslines.com](http://www.VTtranslines.com)

### **Rutland Southern Vermont Regional Airport**

(802) 786-2579  
1002 Airport Road  
North Clarendon, VT 05759  
[www.flyrutlandvt.com](http://www.flyrutlandvt.com)

### **Todd Transportation**

(802) 775-2377  
25 Curtis Avenue  
Rutland, VT 05701  
[www.toddtransportation.com](http://www.toddtransportation.com)

### **Vermont Railway**

(802) 775-4356  
118 Post Street  
Rutland, VT 05701  
[www.vermontrailway.com](http://www.vermontrailway.com)

## **UTILITIES AND ENVIRONMENT**

### **Casella Waste Systems**

(802) 775-0325  
25 Greens Hill Lane  
Rutland, VT 05701  
[www.casella.com](http://www.casella.com)

### **eDF renewables**

(802) 299-5668  
69 Merchants Row  
Rutland, VT 05701  
[www.edf-re.com/distributed-solutions](http://www.edf-re.com/distributed-solutions)

### **Efficiency Vermont**

(802) 540-7706  
128 Lakeside Ave. Ste. 401  
Burlington, VT 05401  
[www.efficiencyvermont.com](http://www.efficiencyvermont.com)

## **Green Mountain Power**

(802) 773-2711  
2152 Post Rd.  
Rutland, VT 05701  
[www.greenmountainpower.com](http://www.greenmountainpower.com)

## **Rutland County Solid Waste District**

(802) 775-7209  
2 Green Hills Lane  
Rutland, VT 05701  
[www.rcswd.com](http://www.rcswd.com)

## **SunCommon**

(802) 798-2657  
442 US Rte 2  
Waterbury, VT 05676  
[www.suncommon.com](http://www.suncommon.com)

## **VELCO**

(802) 773-9161  
366 Pinnacle Ridge Road  
Rutland, VT 05701  
[www.velco.com](http://www.velco.com)

## **Vermont Gas Systems**

(802) 951-0373  
85 Swift Street  
South Burlington, VT 05403  
[www.vermontgas.com](http://www.vermontgas.com)

## **WORSHIP**

### **Calvary Bible Church**

(802) 775-0358  
2 Meadow Lane  
Rutland, VT 05701  
[www.cbcbvt.org](http://www.cbcbvt.org)

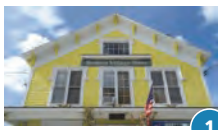
### **Gateway Church**

(802) 773-0038  
144 Woodstock Avenue  
Rutland, VT 05701  
[www.gatewaychurchunited.com](http://www.gatewaychurchunited.com)

### **Rutland Jewish Center**

(802) 773-3455  
96 Grove Street  
Rutland, VT 05701  
[www.rutlandjewishcenter.org](http://www.rutlandjewishcenter.org)





1

## BENSON

*The Benson Village Store*

Hungry? Or maybe you need to mail a letter, fill up the gas tank, and report your big game kill, all at the same time? Then you need to stop at the Benson Village Store in the quaint town of Benson. It's much more than a store — it's where the locals gather around the well-worn farm table to share news and old stories. The store is owned by a former Philadelphia-area native, so be sure to try the cheese steaks.

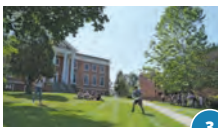


2

## BRANDON

*Vermont's 'Art and Soul'*

Brandon is known as the 'Art and Soul' Village of Vermont, a title earned for its vibrant community of art galleries and eateries that invite visitors to enjoy the town's culture. History and learning opportunities can be found at the Stephen A. Douglas Birthplace and the New England Maple Museum, while the nearby Moosalamoo National Recreation Area offers miles of forest for biking, hiking, and camping.



3

## CASTLETON

*Friendly and Picturesque*

Castleton is best known as home to Castleton University, a public liberal arts college with a wide-ranging curriculum. Located on the scenic Stone Valley Byway, Castleton is known for its quintessential New England beauty and warm hospitality. Visit the sandy beaches of Lake Bomoseen for swimming and boating, or hike the self-guided Slate History Tour for glimpses of the quarries that once dominated Castleton's industry.



4

## CHITTENDEN

*Unbroken Forest*

Chittenden is Vermont's largest town by area, chartered in 1780 and named after the state's first Governor, Thomas Chittenden. Most of the town is unbroken National Forest interrupted only by the Chittenden Reservoir, a serene, 750-acre lake virtually untouched by development. Hikers, horseback riders, and cross-country skiers make their way to Chittenden for natural adventure in every season.



5

## CLARENDON

*Clarendon Gorge*

Just south of Rutland City, Clarendon, Vermont, is home to the Rutland Southern Vermont Regional Airport and some of the most picturesque swimming holes in the state. The most famous spot is Clarendon Gorge, accessible via a short (1/10 of a mile) section of the Appalachian Trail. After crossing an Indiana Jones-like suspension bridge, you can work your way down the side of the gorge to deep, cool pools of mountain water.

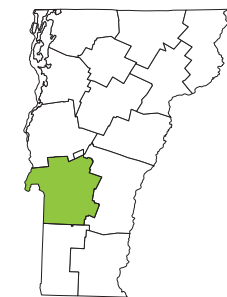


6

## DANBY

*Home of Imperial Danby Marble*

Like several other towns in Rutland County, Danby sits atop a rich vein of mineral deposits. Danby's specialty is a high-grade architectural marble, respectfully known as "Imperial Danby." It's been used to construct many notable buildings, including the Supreme Court building and the Jefferson Memorial in Washington D.C.



7

## FAIR HAVEN

*VT's Western Gateway*

Known as Vermont's Western Gateway, Fair Haven, located in the 'hook' along the border with New York State, is anchored by a charming village and a large central green just north of the downtown business district. The homes in and around downtown, celebrated for their gorgeous Victorian architecture, have housed generations upon generations of Vermonters.



8

## HUBBARDTON

*Home of The Battle of Hubbardton*

Hubbardton is best known for the Battle of Hubbardton of 1777, the only Revolutionary War Battle to be fought entirely in Vermont. Today, you can visit the battlefield where the outnumbered Americans prevailed against the British, and visit the museum that details its place in the nation's history. After taking in some history, campers can enjoy the peace and quiet Half Moon State Park, set on Half Moon Pond, with waterfront lean-tos and cabins.

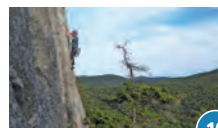


9

## IRA

*Preserving History*

The people of Ira are dedicated to preserving the rich history of their town. For over 200 years, residents hosted community gatherings in the Ira Town Hall, which has stood since 1800. By the 1990's, however, it was crumbling away. Rather than lose their beloved landmark, townsfolk called in the US Army. With the help of Army and a national grant, the Ira Town Hall was restored to its former glory and remains to this day a gathering place for the hardworking citizens of this Vermont town.



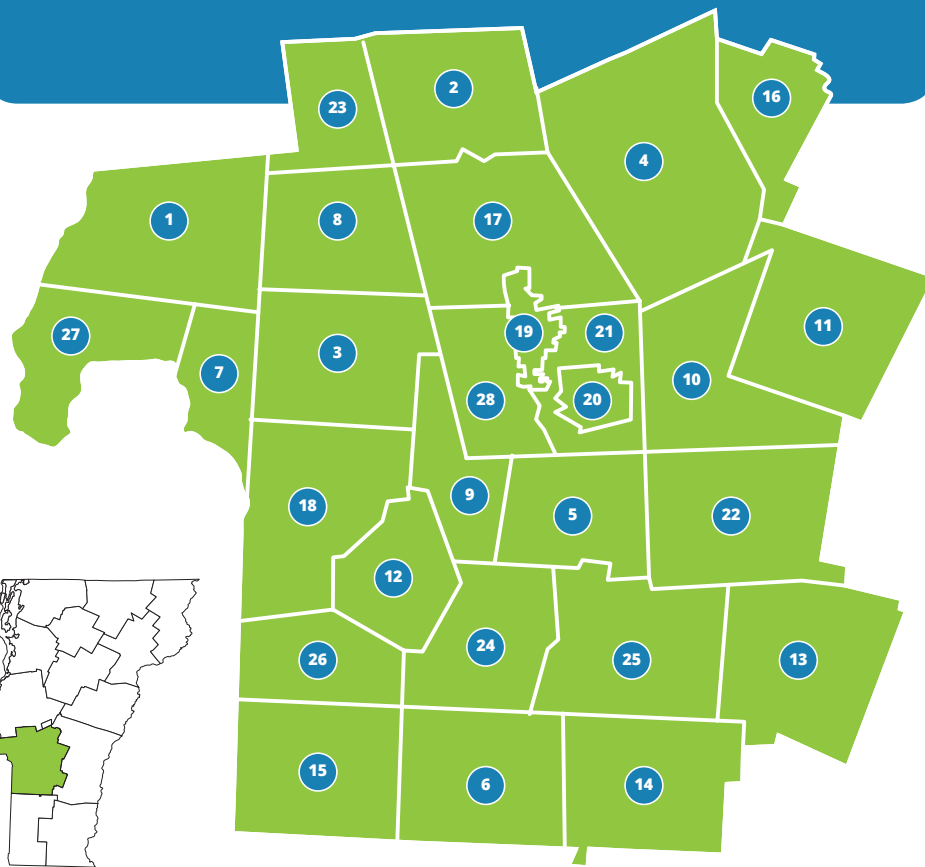
10

## MENDON

*Make It Homebase*

Mendon is situated on the Long Trail at the base of Killington Mountain, from which hikers and skiers can access a spectacular peak from their choice of trails. The town offers a peaceful homebase to southern Vermont's best features, including the Pico Mountain, the city of Rutland, and Chittenden Reservoir.

# EXPLORE our towns OF RUTLAND COUNTY







11

## KILLINGTON

### Mountain Access

Killington is home to both Killington Peak and Pico Peak, and has been welcoming outdoor adventurers for over 200 years. Today, Killington Resort invites skiers and snowboarders to experience the mountains, while the Green Mountain National Golf Course is one of the state's best public courses. Numerous hiking trails make their way to the peaks' spectacular summits, and backpackers celebrate the 100-mile mark of VT's historic Long Trail.



14

## MOUNT TABOR

### Life Off the Beaten Path

Mount Tabor is nearly tied with West Haven for the lowest population in the region and has fewer than 100 households. Most of the town is part of the Green Mountain National Forest and is full of adventures for those who enjoy life off the beaten path. The Mount Tabor County Store is most recognizable landmark in town and has, some say, the best coffee in the region.



15

## PAWLET

### Taconic Mountain Town

Although Vermont is best known for the Green Mountains, the Taconic Mountain range also extends into the southwestern corner of the state. Near the northern terminus of the Taconics lies Pawlet, a postcard-perfect town defined by valley farmlands and unspoiled mountain peaks. After building an appetite from hiking the gorgeous nearby trails, stop in for dinner at The Barn Restaurant, known for its live bluegrass music and Wednesday night "Pickin'" in Pawlet" open mic nights.



16

## PITTSFIELD

### Mountains & Maple Syrup

Pittsfield makes good use of its mountainous terrain and New England charm. The notoriously difficult annual Pittsfield Snowshoe Race (and even more extreme Death Race) challenges contestants from all over. The unofficial town center is found at the Original General Store, serving up delicious breakfast, local news, and Vermont maple syrup.



17

## PITTSFORD

### Sunshine Village

Pittsford was first settled in 1769, and still hosts archaeological remains of Vermont's oldest homesteads. Since then, it's been dubbed 'Sunshine Village' for receiving the most sunshine of any other town in Vermont. Situated along Otter Creek, Pittsford is home to abundant wildlife, covered bridges, and working farms.



18

## POULTNEY

### Home of the Good Life

Poultney is located on the New York-Vermont border and has earned the name 'Home of the Good Life' for its vibrant community and location in the beautiful Lake St. Catherine region. Poultney's downtown reflects the care and commitment of its citizens to preserve the town's history and values.

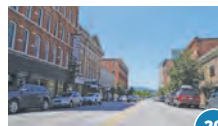


19

## PROCTOR

### Marble Capital of Vermont

When people think Proctor, one word comes to mind: marble. A huge vein was discovered in the 1800s, right as railroad construction in the US was booming, and Italy (the main supplier of marble on the world market) was exhausting its deposits. Timing is everything, and Proctor quickly became the world's #1 supplier of marble. Drive through town, and you'll see the impact of this industry: the main bridge in town, house foundations, and even the firehouse are made of pure marble.



20

## RUTLAND CITY

### Historic Downtown

Rutland's historic downtown is the seat of Rutland County and the heart of Vermont's third largest city. Murals of elephants and whales showcase the local art scene, as well as the brick walls of Rutland's 19th-century buildings. The flavors and culture of Vermont are on proud display in Rutland, a cultural hotspot nestled between mountain ranges.



21

## RUTLAND TOWN

### Natural Wonder & Renowned Hospitality

Rutland is situated between two mountain ranges, the Green Mountains that gave Vermont its name and the northern section of the Taconic Range. Surrounding an historic downtown, Rutland hosts visitors seeking VT's natural wonder and renowned hospitality. Access historic footpaths and local flavor from the town that defines Rutland County.



22

## SHREWSBURY

### Nature Lover's Dream

There's just something about Shrewsbury when it comes to love and nature. Matt Danaher, owner of Danaher Fishery, nurtures thousands of trout every year for release into VT's waterways. The Shrewsbury Sno-Birds, a snowmobile club founded 1971, has a mission to "encourage the preservation of our natural environment." And in 1986, a lovestruck moose spent 2 months courting a Shrewsbury farmer's cow. Though the moose's advances went unrequited, the story lives on in the book "A Moose for Jessica."



23

## SUDBURY

### Where Farmland and Mountains Mingle

In the northwestern corner of Rutland County sits Sudbury, a town of about 500 people where small farms dot the rolling landscape. In the center of Sudbury, just past the intersection with Rte. 73, pull over at the very Instagrammable Congregational Church, which was built in 1803 and doubles as the town hall. Then drive a few miles south and visit Understory Farm, an organic flower farm that is completely powered by draft horses.



24

## TINMOUTH

### Remote and Wild

Tinmouth lies 25 minutes south of Rutland, where a small population enjoys spectacular views of the Taconic Mountains. Home to unique wetland areas and biodiversity, much of the town land belongs to the Tinmouth Channel Wildlife Management Area, seeking to conserve this special place. For those who hike, hunt, fish, or canoe, Tinmouth is a rare, remote escape into Vermont's wild character.



25

## WALLINGFORD

### Green Mtn. National Forest

With more than half of its land area in the northernmost portion of the Green Mountain National Forest, Wallingford is breathtakingly gorgeous, yet easily accessible. The center of town, just a 15-minute drive from downtown Rutland, features restaurants, bars, and shops. Take a hike on the Appalachian Trail as it winds its way over Wallingford's mountains. For a special treat, visit Little Rock Pond in early October when fall foliage is at its peak.



26

## WELLS

### Lake St. Catherine & Little Lake

Swimmers and kayakers, rejoice. Wells is lucky to have not one, but two gorgeous bodies of water: Little Lake and Lake St. Catherine. Launch your vessel at the Fish and Game station between the two lakes, then keep your eyes peeled; blue herons, ring bill gulls, red tail hawks, pileated woodpeckers, loons and even bald eagles are commonly spotted here.



27

## WEST HAVEN

### Slate Capital of Vermont

Situated along the New York border, West Haven, Vermont, lies at the southernmost tip of Lake Champlain and is home to a rich vein of slate, which for the past century and a half has been used for everything from chalkboards to roof shingles. Get your heart racing with a visit to Devil's Bowl Speedway, the longest auto race track in Vermont; it's also where Governor Phil Scott became the only sitting governor to win a Vermont stock car race, in the summer of 2017.



28

## WEST RUTLAND

### Land of Marble

Chartered in 1761, West Rutland found its place on the map when high-quality white marble — and lots of it — was discovered in the 1830s. Since the end of the marble industrial era, it's history has been kept alive at The Carving Studio and Sculpture Center, and by protecting the West Rutland Marsh. Rare bird species have made a home here, created by sand discarded by the marble industry. Birders, hikers, and history buffs make their way to West Rutland to experience VT's storied landscape.



12

## MIDDLETOWN SPRINGS

### Gem in the Hills

Middletown Springs is a vibrant, creative community with scores of artists, artisans, and agricultural businesses. Its rich history as a resort destination, with flowing springs, continues to lend character to the town.



13

## MOUNT HOLLY

### Minutes from Okemo

Mount Holly is the hometown of snowboarder Hannah Teter, who won the gold medal in halfpipe at the 2006 Olympics. It's no wonder she rose to greatness, as Mount Holly is a winter sports enthusiast's ideal locale. Okemo Mountain is only 10 minutes away, and Killington Mountain (the East's largest ski area) is 45 minutes away.





# FACES of Real Rutland



## PRODUCER/PUBLISHER

*Rutland Region Chamber of Commerce*  
50 Merchants Row | Rutland, VT 05701  
(802) 773-2747 | [rutlandvermont.com](http://rutlandvermont.com)



## PHOTOGRAPHY

*Vibe Portrait Art*  
23 Washington St. | Rutland, VT 05701  
(802) 773-8480 | [vibeportraitart.com](http://vibeportraitart.com)  
[vibecommercialimaging.com](http://vibecommercialimaging.com)



## GRAPHIC DESIGN

*Lyz Tomsuden*  
Rutland, VT | (802) 345-8438  
[lyztomsuden.com](http://lyztomsuden.com)



## PRINTER

*SPC Print Integrated*  
19 Precision Dr. | Springfield, VT 05150  
(802) 886-2201 | [springfieldprinting.com](http://springfieldprinting.com)