

2019/2020

FACES of Real Rutland

RUTLAND REGION CHAMBER OF COMMERCE



MEMBERSHIP DIRECTORY

Rutland
Region
CHAMBER OF COMMERCE



Welcome to the Rutland Region Chamber

The Rutland Region Chamber of Commerce Mission is to create an economic climate conducive to business growth and a bridge from the business community to the general public and cultural organizations to enhance the quality of life in the broader Rutland Region.

We work collaboratively with many organizations to promote the region as an exceptional place to live work and play. We consider ourselves the intersection between the community and business and strive to promote all that is good about the region and improve the everyday lives of our residents.

The Chamber has a strong membership of valued businesses of all sorts and sizes. The Faces of the Rutland Chamber will introduce you to many in our business community and the *real* Rutland where we live, work and raise our families.

ANNUAL EVENTS

- LEGISLATIVE BREAKFAST SERIES
- MONTHLY CHAMBER MIXERS
- REAL RUTLAND FEUD
- CHAMBER BUSINESS SHOW
- INDOOR GOLF TOURNAMENT
- CHAMBER GOLF CLASSIC
- 4TH OF JULY FIREWORKS EXTRAVAGANZA
- WINTER IN AUGUST
- ANNUAL MEETING

We hope to see your face there!



TABLE OF CONTENTS

BUSINESS	PAGE	BUSINESS	PAGE
ALDERMAN'S CHEVROLET AND ALDERMAN'S TOYOTA <i>Faces of Alderman's</i>	9	COMMUNITY HEALTH <i>Faces of Community Health Centers</i>	19
ALISON MCCULLOUGH REAL ESTATE <i>Faces of Real People Dedicated To Real Estate</i>	42	CORNERSTONE DENTISTRY <i>Faces of Oral Health Professionals</i>	39
ALLEN POOLS & SPAS <i>Face of Allen Pools & Spas</i>	8	CRITERIUM-LALANCETTE & DUDKA ENGINEERS <i>Faces of Building Inspections and Consulting</i>	13
BALANCEWORKS <i>Faces of Custom Foot Comfort</i>	21	DAVIS & HODGDON ASSOCIATES <i>Faces of Accounting and Tax</i>	7
BRIX BISTRO <i>Faces of Bistro Dining</i>	11	EDWARD JONES <i>Faces of Trusted Branch Teams</i>	49
BROC COMMUNITY ACTION <i>Faces of BROCC Community Action</i>	12	FACEY GOSS & MCPHEE, PC <i>Faces of Dedication To All Your Legal Needs</i>	22
CARPENTER & COSTIN <i>Faces of Design & Care of Fine Landscapes</i>	23	FARRELL DISTRIBUTING <i>Faces of Beverage Professionals Since 1933</i>	10
CASELLA CONSTRUCTION INC. <i>Faces of Civil Construction</i>	14	FOUR SEASONS SOTHEBY'S INTERNATIONAL REALTY <i>Faces of Exceptional Real Estate Service</i>	26
CASELLA WASTE SYSTEMS <i>Faces of Sustainability & Resource Solutions</i>	46	GOOD SHEPHERD'S LITTLE LAMBS AND LITTLEST LAMBS EARLY LEARNING CENTER <i>Faces of Early Childhood Care and Education</i>	24
CASTLETON UNIVERSITY <i>Faces of Transformational Higher Education</i>	48	GREEN MOUNTAIN POWER <i>Faces of Energy Transformation</i>	25
CLEARCHOICEMD URGENT CARE <i>Faces of Urgent Care</i>	52	HANNOUSH JEWELERS <i>Faces of Your Family Jeweler</i>	59
COBRA GYMNASTICS & DANCE CENTER <i>Faces of Cobra Gymnastics & Dance Center</i>	15	HENRY'S BARBER SHOP <i>Face of Old Time Barber Shop</i>	38
COMMUNITY BANK, N.A. <i>Faces of Full Service Banking</i>	30	HERITAGE FAMILY CREDIT UNION <i>Faces of Financial Cooperatives</i>	28
COMMUNITY CARE NETWORK <i>Faces of Community Care Network</i>	17	KEYSER ENERGY <i>Faces of Your Full-Service Energy Provider</i>	60
COMMUNITY COLLEGE OF VERMONT WORKFORCE EDUCATION <i>Faces of Workforce Education</i>	58		

TABLE OF CONTENTS

BUSINESS	PAGE	BUSINESS	PAGE
LYZ TOMSUDEN, GRAPHIC DESIGNER <i>Face of Graphic Design</i>	31	SOUTHWESTERN VERMONT COUNCIL ON AGING <i>Faces of Support for Older Vermonters and Caregivers</i>	45
MARCELL'S OIL COMPANY <i>Faces of Fuel Oil Delivery and Service</i>	29	THE BANK OF BENNINGTON <i>Faces of Vermont Local Banking</i>	53
MORGAN STANLEY <i>Faces of Wealth Management</i>	57	THE RICHARDS GROUP <i>Faces of Insurance and Employee Benefits and Retirement Plans</i>	34
PAGE'S CONCIERGE AND CLEANING <i>Faces of Concierge and Cleaning Excellence</i>	20	TPW REAL ESTATE <i>Face of TPW Real Estate</i>	47
RE/MAX SUMMIT REAL ESTATE <i>Faces of Real Estate Done Right</i>	41	TRUST COMPANY OF VERMONT <i>Faces of Vermont's First Independent Trust Company</i>	56
RIVERSIDE VETERINARY CARE & DENTAL SERVICES <i>Faces of Trusted Veterinary Care</i>	50	UBS FINANCIAL SERVICES <i>Faces of UBS Financial Services</i>	51
RUTLAND INTEGRATIVE HEALTH <i>Faces of Integrative Health</i>	35	VELCO <i>Faces of a Sustainable Vermont</i>	6
RUTLAND HERALD <i>Faces of Rutland Journalism</i>	43	VERMONT SPORT AND FITNESS CLUB <i>Faces of Health and Fitness</i>	32
RUTLAND REGION CHAMBER OF COMMERCE <i>Faces of the Chamber</i>	5	VERMONT SYMPHONY ORCHESTRA <i>Faces of Music and Music Education</i>	37
RUTLAND REGIONAL MEDICAL CENTER <i>Face of Community Health</i>	18	VERMONT VETERANS' HOME <i>Faces of Vermont Veterans' Home</i>	54-55
RUTLAND REHAB MASSAGE <i>Face of Massage Therapy</i>	36	VIBE PORTRAIT ART <i>Faces of Photography</i>	40
RUTLAND YOUNG PROFESSIONALS <i>Faces of Your Local Young Professionals Group</i>	61	VNA & HOSPICE OF THE SOUTHWEST REGION <i>Faces of Home Health and Hospice Care</i>	33
SPC PRINT INTEGRATED <i>Face of Exceptional Service & Quality Print</i>	27	VMS CONSTRUCTION <i>Faces of Commercial and Residential Construction</i>	16
STAPLES <i>Faces of Staples Retail</i>	44	MEMBERSHIP DIRECTORY	62-73



FACES OF THE CHAMBER

Rutland Region Chamber of Commerce

The Rutland Region Chamber of Commerce is a membership organization committed to maintaining an attractive business climate to retain existing businesses and attract new businesses to our region.

We advocate for, and promote member businesses through marketing, networking and advocacy in Montpelier to provide a voice for our small businesses as well as large employers. Both are vital to our economy and communities.

We recognize that a modern infrastructure is crucial to our mission. Your Chamber is a long-term advocate for continuous improvements of our infrastructure and the efficiency of utilities and transportation, including roads, rail and air. We have supported and advocated for many

of the improvements we have seen over the past decades, and continue to push for continued progress across all transportation modes.

Currently your Chamber is leading the marketing effort for our region in an effort to grow our population by promoting our assets, including our excellent quality of life, availability of jobs, attractive housing costs, quality of schools and recreational opportunities.

We are dedicated to promoting tourism to our region and improving the visibility of our hospitality and tourism-related businesses. We work to increase our exposure to potential residents and returning visitors from across the country and around the world.



FACES OF A SUSTAINABLE VERMONT

VELCO

The 150 employees of VELCO bring deep know-how, passion, and creativity to ensuring the reliability of Vermont's power grid today and finding innovative ways to serve Vermont's energy future. Our vision is to support a sustainable Vermont through our people, assets, relationships, and operating model.

VELCO was formed in 1956 when Vermont's local utilities joined together to establish the nation's first statewide transmission-only company in order to create and maintain an interconnected power grid. You can think of transmission as the backbone of the electric system carrying high voltage

power from where it is generated to substations where it is transformed to supply local customers through their electric distribution companies.

Headquartered in Rutland, we create healthy and sustainable environments at work, in our communities, and throughout Vermont, while maintaining the highest electric transmission reliability standards. We love supporting our local communities by sponsoring some of Rutland's great events, organizations, and activities to promote our region as one of the best places to live, work, and play.



FACES OF ACCOUNTING AND TAX

Davis & Hodgdon Associates CPAs, PLC

Why us? With 30 years of experience and offices in Rutland and Williston Vermont, Davis & Hodgdon Associates CPAs is a public accounting firm providing proactive business and personal tax advice, audits to nonprofit organizations, and a variety of business services including bookkeeping, business valuation and exit planning.

We do more than taxes. Our services empower business owners to focus on what matters most to them – growing their business.

We live, work and contribute to a vibrant Rutland community and our firm is passionate about corporate social responsibility (CSR). Since the inception of a formal policy in 2013, we have donated over \$127,000 in charitable giving and sponsorships and over \$407,000 in pro-bono and skills-based services to

nonprofit clients and organizations throughout Vermont, including Rutland County.

As part of our commitment to holistic financial counsel, we offer personalized financial planning and investment guidance through our sister entity Copper Leaf Financial. Copper Leaf is a fee-only, fiduciary, registered investment advisor, specializing in true wealth management with the careful, tax-aware eyes of our CPAs.

We are more than an accounting firm. At Davis & Hodgdon we are committed to using our resources and expertise to give back and help improve the community in which we work and live. We are counselors on a wide range of financial issues resulting in better decision-making and more confidence in your success.

Experience!



th
Spa



FACE OF ALLEN POOLS & SPAS

Allen Pools & Spas

Allen Pools & Spas was founded in 1957 by Dan Allen Sr. who worked for the State of Vermont as a Registered Civil Engineer. He was contacted about designing and building a swimming pool for the Girl Scout Camp at Tammarck Notch in Mendon, VT. He agreed and built his first pool. He was then contacted by a few more people that had purchased pool kits and hired him to install them. Realizing the potential for a thriving business, he started selling and installing in-ground pools all over Rutland and Windsor counties. Even after building hundreds of swimming pools, Dan Allen Sr. never learned to swim a stroke.

Today, we pride ourselves in our commitment and dedication to delivering the ultimate customer experience each and

every time. Sustained through generations of passion and professionalism with genuine regard to every customer, our community, and environment, we believe in representing products that deliver health, relaxation, and lifetime memories.

Since our establishment in 1957, we have sold, installed, and maintained hundreds of swimming pools and thousands of spas throughout Vermont, western New Hampshire and northeastern New York. We have built our reputation on professional, quality, and dependable service. We are available year round for full service on your pool, hot tub, or sauna. Whether you are looking to buy, need repairs and maintenance, or water care education, we are available 7 days a week!



FACES OF ALDERMAN'S

Alderman's Chevrolet and Alderman's Toyota

We moved to Rutland as a family in February of 1976. During these years we have enjoyed the outstanding quality of life that center Vermont has to offer. What a wonderful and safe place to live, ski, bike, run, swim, hike, golf and play. Obviously we enjoy an active lifestyle. Our family now has 3 generations living in the Rutland area with Phil, Mark and Stacy all active in running our dealerships.

Originally, Phil purchased the Chevrolet dealership at the end of 1975, which at the time was a substandard facility employing around 10 people, since that time we built a new

facility and our staff has grown to around 60 people.

In 2001, we purchased the Toyota dealership, which had been located in Proctor, Vermont with a small, out of date facility. Plans were immediately put in motion to construct a state of the art facility and moved it to Rutland, where we presently employ an additional 60 employees.

We could not be happier with the decision to relocate to Rutland and grow our businesses in this beautiful community.



FACES OF BEVERAGE PROFESSIONALS SINCE 1933

Farrell Distributing

We proudly provide high-quality beer, wine and non-alcoholic beverages to retailers throughout Vermont. With facilities in both South Burlington and Rutland, we are equally equipped to cater to the needs of different types of retailers – from national corporations, to independent stores, to fine dining establishments. We are pleased to be able to bring variety, value and choice to our customers. We are proud to represent over 75 Cicerone Certified Beer Servers, 8 Certified Specialists of Wine and 6 WSET Certified Wine Professionals.

Our roots run deep

We are a third-generation Vermont family business with a strong commitment to serving our customers, our employees and our community. Thomas A. Farrell and several of his

brothers founded M.M. Farrell & Sons in a small warehouse on Pine Street in Burlington, becoming the first licensed distributor in Vermont after Prohibition.

Throughout our long history, we have always believed in giving back to our community and partnering with local organizations to help those in need. This is a commitment shared by all our team members and is fueled by our deep connection to Vermont and the desire to be good stewards of our state.

Throughout its history, Farrell Distributing has maintained a strong commitment to social responsibility, participating in responsible drinking campaigns and partnering with local organizations to help those in need throughout Vermont.



FACES OF BISTRO DINING

Brix Bistro

Brix Bistro is more than just a wine bar: It's a casual restaurant that, in addition to a terrific selection of wines, also serves craft beer, specialty cocktails, a diverse bistro menu and the area's best desserts!

Peter Bourque, general manager, head bartender and well-known local, uses his many years of experience in the restaurant and wine industries to keep things fun and interesting. Cocktails are tasty, beer is local and cold and the wine selection extensive.

The dining experience is forever fresh as head chef Matt Bonstead creates a rotating menu of seasonal main course dishes. Enjoy fresh appetizers, a hearty selection of meats and

cheeses as well as salads, flatbreads, sliders, and pasta.

What sets Brix Bistro apart are the incredible desserts created by co-owner Jill Talbot. The dessert menu changes weekly, keeping it creative and exciting. You can check out the weekly specials on Instagram or Facebook. You'll be hard pressed to find better desserts anywhere!

The ambiance is comfortable and casual. Brix is a great choice for pre-show dinner and drinks, post show appetizers and desserts or to meet up after work with some good friends. During the summer enjoy the outdoors and urban life on the patio indulge in the great food and drinks at Brix Bistro.



FACES OF BROC COMMUNITY ACTION

BROC Community Action

In 1964 President Lyndon B. Johnson and the United States Congress passed the Economic Opportunity Act and effectively launched the nation's War on Poverty. Since that time BROC Community Action has been providing assistance to people in our region living in poverty or of low income. BROC Community Action not only helps individuals and families with critical needs but they also provide opportunity; a path forward. What they call economic self-sufficiency.

In addition to providing people with basic needs like food, shelter, fuel, and utility assistance; BROC Community Action also provides thousands of hours of on the job training, as well as micro business counseling, start up assistance, and a

robust series of workshops providing new skills and learning opportunities for personal and professional growth.

The organization has a strong professional team providing home weatherization from start to finish. This department improves Vermonters lives by bringing them comfort and significant financial savings. And BROC Community Action is home to the Rutland County Community Justice Center taking a restorative approach to building the community.

BROC Community Action has a staff of fifty dedicated individuals. With dignity and respect as their tenet, BROC Community Action is proud to provide these services to the region.



FACES OF BUILDING INSPECTIONS AND CONSULTING

Criterion-Lalancette & Dudka Engineers

Criterion-Lalancette & Dudka Engineers has been providing comprehensive residential and commercial building inspections throughout Vermont and New Hampshire since 1988. We are an engineering consulting firm specializing in building engineering and consulting services as well as Homeowner Association services. We are the Vermont office of Criterion Engineers, founded in 1957. Our national organization has consulted with clients on over 750,000 properties.

We work in support of real estate; buyers, sellers, owners, managers, builders, contractors, lenders, insurers, attorneys, or anyone who has a vested interest in real property. Let us know what your particular needs are and how we can be of service to you.

We know all types of buildings, having evaluated more than 30,000 buildings throughout Vermont and New Hampshire. From major hospitality, institutional, health care and transportation facilities, to high rise multi-family and townhouses, to single family homes. We utilize current methodologies and the latest equipment, including drone inspections, to provide you with the information you need to make an informed decision. Let Criterion-Lalancette & Dudka Engineers work with you on your next project!

Our reputation and consistent professionalism have made us the engineering firm of choice for many and we remain dedicated to proving our value to each of our clients.



FACES OF CIVIL CONSTRUCTION

Casella Construction

Founded in 1987 by brothers Doug and John Casella, Casella Construction has grown to be one of the largest civil and heavy highway contractors in New England. Still a family-owned company today, Joseph Casella and John Casella II now lead our team of nearly two-hundred multi-disciplinary employees.

We offer expertise in: heavy highway, utility installation, environmental contracting, commercial site development, demolition, and transportation.

We pride ourselves on being at the forefront of technology and environmental stewardship. We complete challenging

projects at a competitive price while exceeding current environmental standards.

We are recent recipients of two Best Builder Awards in the Heavy Industrial Aviation and Environmental categories from the Associated General Contractors, thanks to our employees' professionalism and commitment to quality and safety.

We believe the key to our continued success is our ability to build, develop, and recognize the best employees in the industry. We value hard work, loyalty, and commitment. Learn about how we dig deep for our customers, our employees, and our community at www.casellainc.com.



FACES OF COBRA GYMNASTICS & DANCE CENTER

Cobra Gymnastics & Dance Center

Owned and operated by Shelby Collett, Cobra Gymnastics & Dance Center has been providing exciting gymnastics, yoga, and dance instruction for the greater Rutland community since 2010.

Hosting local and guest teachers, the pristine and beautiful Studio Serpentine offers a chance for a serene experience in Yoga Dance, Kripalu, Integrative, Hatha, Partner or Foundational Yoga. The dance programs include Nia, Hip Hop, African and Latin Dance (by Rutland's very own Dancing with Stars Champion!). For a Tribal Bellydance experience, join Shelby for a class or enjoy the performances of The Sisterhood of the Silk Road, Rutland's bellydance troupe, since 2005. The studio also offers bodywork and movement workshops throughout the year.

Entering the gymnastics side of the building will heighten your senses with the smell of chalk, and the sounds of joyful expression. Featuring Rutland's highly awarded competitive gymnastics team, the gym provides a platform for creative movement, emotional strength and courageous gymnastics skills. Hosting lighthearted classes for preschool ages and school age children as well, Cobra gives their students a sensational foundation in the sport, providing skills in balance, agility, coordination and strength.

All in all, Cobra focuses on providing life enhancing experiences that ask and allow their students to grow, strengthen and enrich their bodies and minds.



FACES OF COMMERCIAL & RESIDENTIAL CONSTRUCTION

VMS Construction

VMS Construction, located in the heart of Rutland, has been a leading General Contractor and Construction Management firm for over 25 years in the Central and Southern Vermont regions. VMS specializes in all types of commercial construction, ranging from institutional, multi-family, industrial, retail, office, and historical. VMS also has a residential division which specializes in everything from new homes to kitchen renovations.

VMS believes in the value of teamwork and has cultivated successful partnerships with many architects, engineers, subcontractors, and vendors in the local area and beyond. These relationships are founded in collaboration, communication, respect, and trust. This provides the best working environment

for all parties to come together as one Team to deliver the highest quality workmanship, while maintaining budget and schedule, for their clients.

Beyond delivering customer satisfaction, VMS has a strong sense of values. VMS cares about their employees and our community. VMS builds a close and supportive relationship with all staff members, fostering a positive environment where they can reach their full potential.

Their dedication and hard work over the last few decades have resulted in a solid reputation of fine craftsmanship, integrity, professionalism, and community involvement.



FACES OF COMMUNITY CARE NETWORK

Community Care Network

Community Care Network is comprised of Rutland Mental Health Services and Rutland Community Programs. The mission of CCN is to enhance the health and well-being of our communities, individuals and families through responsive, innovative and collaborative services. The programs of Community Care Network serve more than 3,000 people each year throughout Rutland County. Our dedicated 350-plus

employees are focused on improving the health of Rutland County residents and their families living with mental illness, developmental disabilities, and substance use disorders, in addition to providing an array of services for younger children and older Vermonters. Please visit our website for a complete listing of services and contact information.



FACE OF COMMUNITY HEALTH

Rutland Regional Medical Center

As Vermont's largest community hospital, our services extend well beyond taking care of an injury or illness. We are also responsible for helping people get and stay healthy. We have a strong community care management system where we team up with primary care providers to focus on prevention, wellness, and the management of chronic diseases. We offer free or low-cost classes and workshops that focus on conditions like heart health, pain management and diabetes.

Our 37 specialty clinics, 277 highly skilled medical staff, and over 1700 additional employees and volunteers, are committed to providing exceptional care and service to patients. Voted the "Best Place to Work" in the 2019 Rutland Herald survey, as well as receiving the 2018

Advisory Board Workplace of the Year Award, Rutland Regional boasts a highly engaged workforce. Our employees are invested in the community and can be seen participating in food drives, neighborhood beautification projects, and coaching youth sports.

We have distinguished ourselves by being named a "Best Regional Hospital" by *US News & World Report* for 2018-2019, and more recently received our seventh "A" rating in a row for Patient Safety from the Leapfrog group.

Everyone at Rutland Regional recognizes that when it comes to healthcare, we are all in this together. Healthy You. Healthy Together.



FACES OF COMMUNITY HEALTH CENTERS

Community Health

We're still Community Health Centers of the Rutland Region, but we've officially shortened our name to Community Health to make it easier to remember. Community Health is a group of seven comprehensive primary care centers and two dental practices that provides care to approximately 75% of Rutland County residents. Community Health has locations in West Pawlet, Shoreham, Brandon, Castleton and multiple locations in Rutland. All sites are designated Level 3 Patient Centered Medical Homes for meeting national standards for care coordination and on-going quality improvement. All of our offices are accepting new patients.

More than 370 employees work together to help us meet our mission to improve the health and wellness of all people in the communities we serve. Community Health serves all

patients without regard to income or insurance status and provides a sliding fee discount based on household income.

The offices have convenient hours including on weekends. We offer a full range of services including behavioral health services, preventative health care, women's health care, well-child care including immunizations, management of chronic or serious illness and workers comp injuries. Some locations have X-ray and laboratory services available. There is a pharmacy at the Brandon location. We offer Express Care at both Rutland and Castleton for all your minor illnesses and injuries. Express Care is open from 8am to 8pm Monday-Sunday and walk-ins are welcome

See our website, CHCRR.org, for more information.



FACES OF CONCIERGE AND CLEANING EXCELLENCE

Page's Concierge and Cleaning

Page's Full Service Concierge & Cleaning is celebrating nearly 5 years in business. Stephanie Cornell, owner and operator of Page's has had the pleasure of growing her business from just a few clients to well over 100. With the dedication of our staff and the growing list of happy clients, Page's success is insurmountable.

We are excited to announce our new Concierge Service which sets us apart from anything in the local industry, as we continue to provide the excellent service, attention to detail and consideration to our many clients. We would like to invite all of you to visit our Facebook and Instagram page for more details.



FACES OF CUSTOM FOOT COMFORT

BalanceWorks

BalanceWorks is your one-stop shop for custom foot comfort. Specializing in foot care, footwear and shoe repair, we blend old-world craftsmanship with 21st-century technology to provide properly fitted comfort shoes and foot orthotics. BalanceWorks is the answer for better balance, proper stance and gait for improved health, fitness and performance.

Locally owned and operated by David Goodspeed--a Board Certified Pedorthist--since 1988, we're proud to be part of the Rutland community for more than three decades. BalanceWorks offers a wide range of state-of-the-art services and products. Among them are 3D-printed, custom foot orthotics and diabetic/orthopedic comfort shoes, boots, sandals, and slippers.

Lenoci's Shoe & Leather Repair has been serving Rutland since 1932 and merged with BalanceWorks in 2007 to create a full-service foot and shoe establishment. Lenoci's is a comprehensive cobbler shop, one of four remaining in Vermont, offering a variety of services from resoling and stretching boots and shoes to sharpening a variety of blades. We'll keep your favorite leather goods in top shape--if it can be fixed, we can do it!

We pride ourselves on customer service, craftsmanship and high-tech solutions for your foot and shoe needs.

Contact us for a free foot and shoe evaluation!



FACES OF DEDICATION TO ALL YOUR LEGAL NEEDS

Facey Goss & McPhee P.C.

FACEY GOSS & MCPHEE P.C. ATTORNEYS AT LAW PROVIDES DIVERSE, COMPREHENSIVE, EFFICIENT AND SOUND LEGAL SERVICES. Facey Goss & McPhee P.C. is a full-service law firm based in Rutland, Vermont that was founded in 1984. The firm presently has seven partners, four associates and one "Senior Counsel". We offer clients in Vermont, New Hampshire, New York and Massachusetts a complete range of legal services with an emphasis on quality of work product, competitive cost and an overriding commitment to client service at a sophistication level comparable to large urban law firms. The attorneys and staff at FG&M are highly capable and versatile, with deep experience in Commercial Transactions, Real Estate & Condominium Law, Energy & Utility Law, Civil Litigation, Environmental and Land Use Permitting, Criminal Defense,

Tax and Estate Planning, Immigration, and Family Law. Every one of our Vermont attorneys brings a wealth of professional experience in their respective practice areas, with a particular expertise on the intricacies of Vermont law. Our Vermont attorneys are also actively involved locally, participating in numerous professional and community organizations. If you or your business is in need of either general or very specialized legal services, we invite you to learn more about Facey Goss & McPhee. Please explore our website at www.fgmvt.com to find information about our practice areas and Vermont attorneys, the latest legal news, and other essential resources. Feel free to contact any of our Vermont lawyers directly through our website or telephone anytime at 802-773-3300.



FACES OF DESIGN & CARE OF FINE LANDSCAPES

Carpenter & Costin

Carpenter & Costin was established in Vermont in 2005 and is locally-owned by Russ Marsan and Matt Cataldo. We specialize in providing a full range of landscape design and construction services and snow removal services to residential, commercial and institutional properties throughout Central VT & Western NH.

Russ and Matt take a personal interest in every client's desire to have an attractive property. We work to understand your needs, then design and create landscapes that provide years of enjoyment while enhancing curb appeal that also improves property value. We take great pride in establishing and maintaining trusting relationships with our clients, staff, vendors and community.

Our conscientious team ensures your landscape enhances the image of your home or business by creating and maintaining pleasant outdoor spaces where family, friends and associates enjoy time together.

We value the personal development of our staff through continual education and training in the most up-to-date best practices and advancements in products, processes and results.

We actively work to get kids and families to put down their electronic devices, get off the couch, become more active, and Come Alive Outside!



Good Shepherd's
Little Lambs
Early Learning Center



FACES OF EARLY CHILDHOOD CARE AND EDUCATION

Good Shepherd's Little Lambs and Littlest Lambs Early Learning Center

Good Shepherd's Little Lambs Early Learning Center, founded in 1997, was created to serve the Rutland community by providing young children the opportunity to learn and experience their world in an exciting, hands-on setting facilitated by dedicated teachers, enthusiastic community members, and engaged families.

As a Vermont accredited 5 STAR center they have been recognized as one of the highest quality programs in the state for their outstanding care and commitment to children and families. They have also been voted "The Best of the Best Preschool" and "The Best of the Best Childcare" in Rutland since 2012. Their dedication to serving Vermont families continued with the opening of Good Shepherd's

Littlest Lambs, a second childcare center, serving infants and toddlers exclusively in 2018.

It is the desire of both centers to celebrate and appreciate the diversity and uniqueness in all children and their cooperative goal is to nurture children's natural curiosity with their world, to initiate educational activities that stimulate and encourage growth and achievement, and to support and strengthen families.

Good Shepherd's Little Lambs and Littlest Lambs are places in Rutland where children are accepted and loved...places where laughter and play are cherished...places where children are respected and heard...and places where Vermont families are welcome, involved, and encouraged!

GREEN MOUNTAIN POWER ENERGY INNOVATION CENTER



FACES OF ENERGY TRANSFORMATION

Green Mountain Power

Green Mountain Power partners with customers to improve lives and transform communities. GMP is focused on a new way of doing business to meet your needs with integrated energy services that help people save energy and money, and be more comfortable, while continuing to generate clean, cost-effective and reliable power. GMP is the first utility in the world to get a B Corp certification, meeting rigorous standards for our commitment to the environment, employees, and the community.

GMP is proud to work with Rutland City officials, businesses leaders, and residents, to make Rutland the energy city of the future. Rutland made history in 2015 when it became the Solar Capital of New England, with more solar per capita than any other city in New England. This incredible achievement was the result of the strong partnership between Green Mountain Power and the

Rutland community to make energy innovation a key to economic development and revitalization. GMP is working with more than 80 local businesses who have donated time and materials to the Rutland Innovation Home Contest to build and give away a brand new energy smart home. The winner of the essay contest will be a family who wants to be a part of the Rutland community. GMP is also thrilled to lead other city initiatives like Rutland Blooms, the sculpture project and the Gift-of-Life Marathon, which continue to build community pride.

The GMP Energy Innovation Center in Rutland is the heart of our energy innovation mission. Here our team is working to bring the latest in energy technology and clean energy solutions to our customers. The EIC is located on Merchants Row. Come in and say hi, we'd love to talk!



FACES OF EXCEPTIONAL REAL ESTATE SERVICE

Four Seasons Sotheby's International Realty

The Rutland office of Four Seasons Sotheby's International Realty is a beautifully renovated building at the corner of Main Street and Roberts Avenue. There are many special features offered within this historic property but none more special than the agents which comprise the office. The motto of Properties of Distinction at Every Price Point is something Four Seasons SIR believes in deeply. No matter if you own a \$150,000 home or a million dollar home these experienced, professional Realtors will work with you to showcase your property in the light and distinction in which it deserves. Buyers seeking the home of their dreams can be assured

the folks at Four Seasons SIR will successfully guide them through the process. The agents and staff at Four Seasons SIR encourage sellers and buyers to see their relationship as a partnership in which they work together to achieve their real estate goals.



Four
Seasons

Sotheby's
INTERNATIONAL REALTY



FACE OF EXCEPTIONAL SERVICE & QUALITY PRINT

SPC Print Integrated

SPC has over 100 years of printing experience. We work with all kinds of people who understand the power of the printed word: educational institutions, art museums, graphic designers, healthcare professionals, book publishers, you name it! Anyone who needs help with a print project would benefit from having SPC on their team!

We are dedicated to seamless execution and quality. Our process goes from project inception through to fulfillment. SPC is known for being easy to work with, flexible, reliable and able to meet tight deadlines. We consult, offer solutions and are a resource for all clients until every aspect of a project is just right. Because of this, our clients consider

SPC to be much more than just another print vendor they passively send design files to; our clients consider SPC to be a partner and problem solvers.

Our mission is to make working with SPC as easy and hassle free for the customer as possible. We go the extra mile to ensure that no detail is overlooked, and that each customer gets the same outstanding service every time. When you need help with a print project, whether it's more traditional or extra special, contact SPC. Your local Account Consultant, Roger Vanasse (603) 729-6848, can assist you in making your print materials look their absolute best!



Heritage Family
CREDIT UNION



FACES OF FINANCIAL COOPERATIVES

Heritage Family Credit Union

The purpose of the Heritage Family Credit Union is to provide friendly, personable, high quality services for the entire family. Heritage Family Credit Union is member owned, not-for-profit financial institution. Unlike other financial institutions, a credit union is owned and operated by the people it serves; members are united by a common bond of association and democratically operate under the guidance of the volunteer Board of Directors and the National Credit Union Association's regulations.

Heritage Family Credit Union offers a wide variety of financial products and services including auto loans, credit cards, mortgages, business services and construction loans to meet all of our members purchasing, refinancing and home remodeling needs. Additionally, Heritage Family Credit Union

offers wealth management and retirement services within its Heritage Way program. Also, Heritage Family Insurance Services allows you to conveniently keep your property and casualty insurance with the credit union you trust.

The credit union has ten branches throughout Vermont, located in Rutland, Fair Haven, Castleton, Brandon, Manchester, Bennington, Ludlow and Londonderry, as well as one branch in Hooksett, New Hampshire. As a federally-chartered community credit union, people are eligible to join Heritage Family Credit Union if they live, work, worship, do business, or go to school in any of the following communities: Rutland, Addison, Bennington, Windsor or Windham counties in Vermont, or the town of Hooksett, New Hampshire.



FACES OF FUEL OIL DELIVERY AND SERVICE

Marcell's Oil Company

"At Marcell Oil we strive for excellence in customer service"

Established in the fall of 2008, Marcell Oil is the largest locally owned and operated oil company in both Rutland and Bennington Counties. With over 6,000 customers, we proudly serve Rutland and Bennington counties seven days a week. We deliver the highest quality fuel oil available to homes, construction sites, slate quarries, marble quarries, sugar makers, farmers, loggers and commercial properties. Our service department specializes in tank replacements & furnace cleanings. With 8 delivery drivers and 3 customer service representatives, Marcell Oil is committed to meeting your fuel oil needs.



The Rutland Herald

Best of the Best Fuel Dealer 2016
 Best of the Best Fuel Dealer 2017
 Best of the Best Fuel Dealer 2018
 Best of the Best Fuel Dealer 2019

Market Surveys of America
 Best Heating Oil Company 2017



FACES OF FULL SERVICE BANKING

Community Bank, N.A.

Community Bank, N.A. is a full-service financial institution with more than 230 locations across Upstate New York, Northeastern Pennsylvania, Vermont and Western Massachusetts. We offer personal loans, mortgages, checking and savings accounts, credit and debit cards, online banking, mobile banking, commercial loans, cash management and more. In addition to a full range of retail and business banking services, we also

offer comprehensive financial planning, insurance, and wealth-management services. Community Bank, N.A. has consistently been ranked among the top 15 best banks in America by Forbes magazine for the past eight years running, and was most recently ranked third in 2019. For more information, go to www.cbna.com and Bank Happy! (Member FDIC, Equal Housing Lender, NASDAQ "CBU").





FACE OF GRAPHIC DESIGN

Lyz Tomsuden, Graphic Designer

Graphic design is the process of combining visual elements and text to create an overall message. Whether for commercial, educational, or cultural purposes, graphic design is a form of communication as well as an art. Whether it's a simple poster for a one-time event or the many branded facets that make up your business identity over a period of time, I can help.

Good visual design plays an important role in how you are perceived. In our fast paced society, you only have seconds to convey who you are and what you want to say. I can help showcase your personality and goals with a customized design that sets you apart from the competition.

Since 2006, I've used my skills to assist individuals, nonprofits and businesses throughout the Rutland Region to creatively

communicate their messages. You've likely seen my design work everywhere from the playbills of the Paramount Theatre to the annual report of the VNA & Hospice, as well as the branding of the Rutland Young Professionals and the design of the I Am Vermont Strong fundraising campaign. In 2017 I launched my side business into a full-time career, taking on a variety of exciting new projects and clients, including this very guide for the Rutland Region Chamber of Commerce.

As an independent business owner, you get the ability to work directly with me to transform your abstract ideas into a visually cohesive message. I'm friendly, flexible and accessible with knowledge and experience in multiple forms of design. I'm always open to whatever projects come my way, so don't hesitate to reach out!



VERMONT
SPORT & FITNESS CLUB



FACES OF HEALTH AND FITNESS

Vermont Sport & Fitness Club

Award-winning Vermont Sport & Fitness Club is focused on providing the number one fitness experience in Vermont. When you walk inside, VS&F has a bright, energetic atmosphere that is also comfortable and welcoming. You will always be greeted by a friendly face available to answer any questions, or talk about your day. Once in the club, it's time to choose your own adventure! Head out to the pool or steam room to relax or go straight for one of our spacious fitness or weight rooms with your personalized workout.

You can meet your trainer on the floor for your session or burn some calories and clear your mind in our well-equipped cardio room. If you're looking for classes, you're in the right spot. Meet up with friends and enjoy one of our 30+ classes each week with your favorite instructor. For 25 years members have found success with their health and fitness at VS&F, and you can too. The first-class experience is designed to make you stronger, fitter, and full of energy, to help you get the most out of life.



ACES OF HOME HEALTH & HOSPICE CARE

VNA & Hospice of the Southwest Region

High-quality home health care and hospice care can offer peace of mind in the most challenging of situations. Since 1946, the VNA & Hospice of the Southwest Region (VNAHSR) has served vulnerable populations in our community such as at-risk children, the elderly, those with disabling and chronic illness, and people facing end-of-life.

Founded in Rutland, Vermont, the VNAHSR is a non-profit, Medicare-certified home health and hospice agency delivering a wide-range of advanced medical care with compassion, dependability, and expertise to people of all ages.

Serving Bennington and Rutland Counties in Vermont, our staff of trusted health professionals and caregivers are committed to providing exceptional care to patients and families.

Proud of our national reputation for quality care, VNAHSR is highly rated for Quality of Patient Care and Patient Satisfaction from the Centers for Medicare & Medicaid Services and is recognized as one of the nation's top performing home health agencies, by HomeCare Elite, a market-leading review that identifies top Medicare-certified agencies.



FACES OF INSURANCE, EMPLOYEE BENEFITS AND RETIREMENT PLANS

The Richards Group

When was the last time you had an objective review of your commercial or personal insurance to make sure you have the best coverage at the most competitive price? Have you analyzed your employee benefits program and retirement plan recently to look for opportunities to attract and retain talented employees and enhance your bottom line? The Richards Group has helped clients in the Rutland community for decades and has greatly expanded our local capabilities.

Local know how.

Located at 92 Center Street in Rutland, The Richards Group is an independent, full-service insurance, employee benefits and retirement plan firm, providing proactive solutions.

We're here for you.

While we're local to Rutland, we bring clients the advantages and scale of a larger Vermont based firm. The Richards Group has 12 locations and 130 employees throughout Vermont & New Hampshire: we bring expertise, markets, underwriting leverage, technology and claims advocacy that can prove valuable to our clients. We are proud to have been named one of the "Best Places to Work in Vermont" in each of the past 4 years.

Prepare for tomorrow by contacting us today.

The Richards Group is dedicated to providing Rutland area clients with proactive solutions, expertise and local service. For more information, please visit www.therichardsgroup.com or call us at (802) 775-2503 or (800) 222-6016.



FACES OF INTEGRATIVE HEALTH

Rutland Integrative Health

Rutland Integrative Health is a health care clinic in Rutland Vermont, operating in a new location at 26 West Street. We specialize in complementary and alternative modalities including acupuncture, herbal therapy, naturopathic medicine, primary care, nutrition/dietary therapy, body work and wellness. Rutland Integrative Medicine is committed to providing quality natural health care. Our mission is to provide guidance and support while empowering patients to regain health and vitality.

We see a wide variety of patients from infants to adult and treat a wide range of conditions, including but not limited to,

gastrointestinal disorders, pain and inflammatory conditions, upper respiratory issues, and auto-immune diseases.

Within the office, we are a diverse group of natural health care professionals. Dalite Sancic, is the owner of the building and a Doctor of East Asian Medicine and Licensed Acupuncturist. Greg Burkland is a Naturopathic Doctor, a primary care provider and specialty care. Beth Bloomfield is a Licensed Acupuncturist. Rob DiTursi is a Licensed Massage Therapist. Kali Younger is a Registered Dietitian.



FACE OF MASSAGE THERAPY

Rutland Rehab Massage *6 Time Winner: Market Surveys of America, Best of the Best Award-Massage Therapy*

Medical massage is a niche Pam Lenoci has been providing through her practice for 18 years. Although therapeutic treatments are available through Rutland Rehab Massage, medical massage is the forte of the practice.

Those who have been injured on the job or in an accident can benefit tremendously from medical massage. As Rutland Rehab Massage is one of the few practices that accept payment from insurance providers, it becomes more cost effective for many of these individuals. Further, medical massage can be an integral part of a rehabilitation program, often preventing surgical intervention, can be used for pain management as an alternative to opiates and leads to improved overall health.

Pam has treated many children dealing with stress or injury and has made helping kids a lifelong endeavor. She is involved in the Upward Bound Program at Castleton University and instrumental in raising funds for the Alexandra Brown Memorial Scholarship, a scholarship in honor of her daughter who took her own life twelve years ago. She speaks publicly about teenage suicide, teenage drinking and cyber bullying. Pam is passionate about sharing her daughter Alix's story in hopes it helps even one child through challenging times.

Pam's office is warm, inviting and private. She takes exceptional care of each and every client and believes massage therapy should be a part of everyone's health care plan.



FACES OF MUSIC AND MUSIC EDUCATION

Vermont Symphony Orchestra

The Vermont Symphony Orchestra has served communities statewide for 85 years. Last year, we held 39 concerts in 20 towns across the state, performing in large concert halls, small local venues, community centers, and beautiful outdoor spaces.

We're best known for our full-orchestra classical concerts, but we also bring music to Vermonters in many other ways. We love collaborating with pop and rock artists, like last year's concert with the rock band Guster, or our upcoming performance with Vermont soul singer Kat Wright. Our educational initiatives reach thousands of Vermont students annually through interactive in-school performances, informative backstage tours, and more. You can even book a VSO musician or ensemble for your wedding or special event!

We look forward to many performances in the Rutland area during our 2019/2020 season. We'll be performing a world-premiere commission paired with a film on September 26 in Castleton, on our Made in Vermont Statewide Tour. We're bringing our Jukebox string quartet to Merchants Hall twice this season, on January 17 and March 13, for a mix of classical and contemporary music. This year's VSO at the Paramount series will include Holiday Pops on December 13, plus two classical concerts: Love, Leila and Luther on January 26, and Epic Mozart on March 22.

We hope to see you at one of our concerts. We're making this music for YOU!



FACE OF OLD TIME BARBER SHOP

Henry's Barber Shop

Henry's Barber Shop is an old school barber shop, specializing in traditional men's cuts, as well as today's styles and trends. Henry's Barber shop, located about a block outside of the Downtown Rutland Historic District, is a family owned business established in 1955 by Henry Tyl (1921-2007). Henry's son Steve Tyl, who grew up above and in the shop, has owned and operated the business since 1988.

Henry's Barber Shop is steeped in Rutland's history and traditions. The barber shop has served several generations of local families who appreciate the old style barber shop feel, welcoming atmosphere and eclectic décor.

Going to a barber shop is about more than getting a nice cut at a fair price, which is a specialty at Henry's Barber Shop. It's about the total experience from the friendly smile as you walk in the door, the opportunity to relax and unwind and to socialize and catch up on what is going on in the community. Henry's Barber Shop is open Tuesday & Wednesday 8:30am-6pm; Thursday and Friday 8:30am-9pm and Saturday 7am-3pm. Henry's Barber Shop is walk in only, no appointments are accepted.



FACES OF ORAL HEALTH PROFESSIONALS

Cornerstone Dentistry

We are a team of professionals who are passionate about having a positive impact on people's lives. We understand that our patients are unique individuals and we enjoy helping them prevent dental complications by establishing healthy habits.

Cornerstone Dentistry was established in Fall of 2014, however the practice has been taking care of patients in the Rutland area for over 40 years! Our services include comprehensive general dentistry, clear aligner therapy (Invisalign), tooth whitening, dental implants and other tooth replacement options.

Dr. Yau graduated from McGill University with a degree in Engineering. After working in the corporate world for five years, she decided to pursue dentistry. She graduated

from the University of Toronto with a D.D.S. degree. She also completed a general practice residency in Akron, OH. Following residency, Dr. Yau worked in corporate dentistry in Queensbury, NY. She met with Dr. Michael Dick's team in 2014 and as they say, the rest is history.

Our team cares for patients with compassion and respect. We are mothers, daughters, sisters, neighbors. We understand that most people do not enjoy going to the dentist and we are honored to serve each of our patients. We try to make the dental visit as pleasant and effective as possible.

The Cornerstone Dentistry team continues to welcome new patients.



FACES OF PHOTOGRAPHY

Vibe Portrait Art

"Wow, that was actually much easier and more fun than I'd thought it would be." We hear that sentiment shared frequently around the studio at Vibe Portrait Art. We realize that many people in front of our lens may have a little apprehension about being photographed...so our number one goal is to foster a relaxed atmosphere of fun and creativity.

Vibe is the Rutland Region's largest photography studio, boasting:

- Three camera rooms (two of which are natural-light studios)
- Comfy large screen TV image-viewing lounge
- Outdoor portraits on the grounds of our historic 1865 Victorian manse
- We'll go to any location to create your totally customized portrait!

Did you know that Vibe also has a commercial photography division? If you are looking to promote your company's or organization's brand, Vibe Commercial Imaging is your creative emporium for all things photography. We're proud to have produced virtually all of the images in this 'Faces' directory that you are viewing right now.

Vibe has repeatedly been voted *Best Photography Studio* in the Rutland Region by Market Surveys of America and the readers of the Rutland Herald. Vibe was also voted 2019's *Best Commercial Photographer* by the readers of Vermont Business Magazine.

Vibe has truly become Rutland's favorite photographer.



RE/MAX SUMMIT

FACES OF REAL ESTATE DONE RIGHT

Re/Max Summit Real Estate

When it comes to Real Estate, You deserve the peace of mind knowing you are in the best hands. After all, real estate is typically one of your largest assets and the process can feel confusing, tedious and daunting at times. There are bound to be questions, concerns and variables to take into account- so you want to get it Right.

When you partner with our growing team at RE/MAX, you are partnering with the largest and most productive Real Estate brand in the world. RE/MAX Summit's resources are global, yet you can be assured, you will receive the utmost individual

personal care from local people with the drive, expertise and knowledge of this great region of Vermont.

We pride ourselves in our relationships with our community and clients. There is nothing more satisfying than meeting people and knowing we have made the difference in their ability to fulfill their Real Estate Dreams.

Whether you are planning for your future and would like to discuss the current market trends or you've decided to take that next step, give us a call....you will be glad you did!



FACES OF REAL PEOPLE DEDICATED TO REAL ESTATE

Alison McCullough Real Estate

Real Estate, Real People, Real Results

"They have been real estate professionals in central Vermont for a combined 30+ years. They have very successfully brought a realistic, caring and honest approach to their real estate clients over their career. They take great pleasure in bringing buyers and sellers together to accomplish their goals in a relaxed, professional manner. Alison believes that taking the time to listen to buyers and sellers needs and desires gives them the edge in making the real estate buying or selling process simple and enjoyable."

Whether you are a first-time home buyer, a vacation home seller or buyer, looking for a property on the lake or someone looking to simplify those golden years downsizing to retirement, Alison's goal is to match properties to lifestyles. Alison and her Associates have the important ability, in today's market, to provide all of their information via an informative, easy to navigate website, www.alisonmcculloughrealestate.com which gives their customers easy access and a no pressure approach to the real estate experience.

The motto at Alison McCullough Real Estate is "Because Nice Matters!"



FACES OF RUTLAND JOURNALISM

Rutland Herald

We started as a newspaper, many years ago - more than 200 years ago, in fact. And just in the last 25 years, we've expanded into other mediums, with websites, social media and now podcasts and other innovations. Through all of the changes, a few things have remained constant: Our communities look to us to find out what's going on; our communities use and rely on us to connect beyond their own demographic boundaries; and the public relies on us to hold public officials accountable.

As the only newspaper in Vermont history to win the Pulitzer Prize, the Rutland Herald has a storied past, but is constantly forging new relationships with readers and advertisers. Tens

of thousands of people welcome us into their lives every day, via a print edition delivered to their doorstep, an article on the web site, an email newsletter, a podcast or a post on social media. At a time of generational change in media, we are holding to our valued traditions while we forge a new path as an independent voice in the Rutland region.

At the heart of that is our people - a mix of veterans and newcomers, with a wide range of talents, who love this region and are working to make it a better place. We are the faces of Rutland media!



FACES OF STAPLES RETAIL

Staples

Staples US Retail supports lifelong achievement for small businesses and consumers with the products and resources they need for continued professional and personal growth. With a focus on community and shared learning, Staples retail locations serve millions of customers from entrepreneurs and small businesses owners to parents, teachers and students. For more information about Staples Retail and to stay up to date on weekly deals, please visit us in stores or online.



FACES OF SUPPORT FOR OLDER VERMONTERS AND CAREGIVERS

Southwestern Vermont Council on Aging

Founded in 1974, Southwestern Vermont Council on Aging (SVCOA) has been working to ensure maximum independence and quality of life for older Vermonters in our region for over 40 years.

Serving both Bennington and Rutland counties, SVCOA's dedicated and compassionate staff work tirelessly to deliver a range of essential programs and services to clients of the agency.

From services such as Case Management, Options Counseling, SVCOA HelpLine, Transportation and Nutrition,

to our Elder Care Clinician, Wellness, Money Management, Volunteer, Senior Companion and State Health Insurance programs, SVCOA strives to provide a suite of resources to help Vermonters age independently and in the setting of their choice.

SVCOA is proud of its record of service, but equally as excited to continue to serve older Vermonters in our area for years to come.

As always, don't hesitate to give us a call or stop by and see us – we're always here for you!



FACES OF SUSTAINABILITY & RESOURCE SOLUTIONS

Casella Waste Systems

Founded in 1975 with a single pick-up truck, Casella Waste Systems has grown well beyond its humble beginnings in Rutland, Vermont to become one of the nation's leading providers of waste and recycling services. Casella currently employs more than 2,400 employees throughout Vermont, Maine, New Hampshire, Massachusetts, New York, and Pennsylvania and serves customers in more than 40 states. We are especially proud of our support and dedication to the success of our local communities throughout the Rutland region and beyond.

Sustainability, in all senses of the word – resources, people, and the environment – is the foundation of our business. Every day, we are building critical infrastructure to protect the

health and safety of our society, and developing and investing in innovative solutions to build a better tomorrow for future generations.

In every way, our most important resource is our people. Our deep understanding of resource renewal also guides us in cultivating a culture of lifelong learning and career growth, and flows naturally from our deepest core values and our unwavering dedication to safety and wellness.

We believe the work we do is vitally important and meaningful and that our employees are the stewards of our region's breathtaking natural beauty. We seek to hire the most talented and dedicated people to grow our business and serve our customers. Please visit us at www.casella.com to learn more.



FACE OF TPW REAL ESTATE

TPW Real Estate

We Know Just the Place®

Founded in 1987, TPW is a family-owned boutique Real Estate and Property Management company with offices in Manchester, Stratton, and Okemo.

Whether you're looking to buy or sell real estate in Southern Vermont, we have a team of committed Realtors ready to provide you with exceptional service and satisfaction. From luxury resort homes and condos to vacant land parcels, single-family homes, commercial properties and other unique property types, we are committed to guiding both sellers and buyers every step of the way. We are also available to assist with Annual and Seasonal Rentals.

Condominiums, Co-Operatives, Homeowner Associations, Townhouses, and Resort Vacation Properties are all included in the properties services by our Property Management division.

We are locally owned!

We are licensed Realtors!

We love where we work, live and play!

We look forward to the opportunity to work with and for you!

We are a one-stop-shop for your Real Estate and Property Management needs. Our highly visible offices are open 7 days a week with phones answered 24 hours a day. We Know Just the Place®!



FACES OF TRANSFORMATIONAL HIGHER EDUCATION

Castleton University

Castleton University is small enough to be a community where individuals matter, yet large enough to offer a diverse and challenging curriculum, taught by faculty who are experts in their field. Since first opening its doors in 1787, Castleton has been dedicated to educating future leaders of Vermont and beyond, providing a high-quality education at an affordable price for more than 230 years.

Castleton is committed to elevating the entire Rutland Region as a destination to learn, live, work, and play. With more than 400 community partnerships, the University is developing a workforce that is prepared through a strong liberal arts education and experiential learning through internships,

cooperative education models, clinical placements, research opportunities, and service learning.

With more than 50 clubs, 28 varsity sports competing in the NCAA Division III, thriving fine and performing arts programs, and distinctive conference and events spaces that host nearly 40,000 guests annually, Castleton brings community spirit, entertainment, and engagement opportunities to the region like no one else. Whether you're attending class in-person or online, you're enjoying a beautiful fall day at a Spartan football game, or you're at a wedding under the largest outdoor pavilion in the state, you'll feel right at home at Castleton University.



FACES OF TRUSTED BRANCH TEAMS

Edward Jones

When it comes to your financial future, it's important to work with someone who takes time to understand you and your situation. We take a step-by-step approach to identify your goals and develop specific strategies to help you achieve them. Contact an Edward Jones Financial Advisor today and see how personal service can make a difference.

Caitlin Trombetta, Financial Advisor | Cortney Chadurjian, Branch Office Administrator | 170 S Main St, Rutland | 802-747-6907

Reed Wilcox, Financial Advisor | Denise Jenne, Branch Office Administrator | 128 Merchants Row, Rutland | 802-773-9607

Lon Smith, Financial Advisor | Barbara Kallen, Branch Office Administrator | 82 Woodstock Ave, Rutland | 802-773-5992

Jeremy Carroll, Financial Advisor | Kimberly Doane, Branch Office Administrator | 271 N Main St, Rutland | 802-773-7877

Zerihune Finn, Financial Advisor | 107 Bonnet St, Manchester | 802-362-3562



FACES OF TRUSTED VETERINARY CARE

Riverside Veterinary Care & Dental Services

If you live in the Rutland or Ludlow area and need a trusted veterinarian to care for your beloved pet-look no further. Riverside has been offering compassionate veterinary care for over 25 years. Our entire staff is dedicated to giving your pet the best quality medical care. Every pet is treated individually and will receive recommendations based on their breed, age and past medical history.

Riverside Veterinary Care & Dental Services is a full service AAHA accredited animal hospital that offers routine medical care, surgical procedures, emergency treatment and comprehensive dental care. Our in hospital diagnostic

laboratory, X-ray and ultrasound equipment allow us to rapidly diagnose medical problems. Veterinarians have advanced dental training which allows us to successfully diagnose and treat canine and feline dental disease. We also have a visiting ultrasound specialist, board-certified surgeon and board-certified dermatologist available for more advanced diagnostics and treatment.

Please visit our website at riversidevetcare.com or follow us on Facebook to learn more about us, read reviews or schedule an appointment. At Riverside Veterinary Care, we are dedicated to providing the best care for your best friend.



FACES OF UBS FINANCIAL SERVICES

UBS Financial Services

UBS has built its history on over 150 years of being committed to bringing global resources to help our clients with sophisticated, customized solutions to help them achieve their wealth management goals for both themselves and those who mean the most to them. As Financial Advisors, we work to give our clients confidence in reaching their financial goals without taking on unnecessary risk in their investments. At UBS we pride ourselves on knowing our clients and their values. We are a local resource in Rutland, Vermont with global depth. We are there to celebrate weddings, births, graduations, new businesses and retirements while being a resource during job changes, loss of a loved one, business sales and all of life's transitions. We are lucky enough to help our clients navigate this ever-changing landscape. This insight helps us provide personalized and thoughtful investment

advice as we work together through all of life's transitions. Thanks to all who entrust us with this great privilege.

Alicia Munukka- Senior Registered Client Service Associate, Pamela Brileya- Senior Registered Client Service Associate., Jenna Watson-Client Service Associate, Andrea Kelley-Administrative Manager, Brad Miller-Branch Manager, Jessica Anderson-Financial Advisor-Senior Vice President Wealth Management, Margo Jones-Financial Advisor-Account Vice President, Peter Kelley-Financial Advisor- Senior Vice President Wealth Management, Sam Groom-Financial Advisor-Account Vice President, John Hamilton-Financial Advisor-Senior Vice President Wealth Management, Anthony R. Vitagliano-Financial Advisor-Senior Vice President Wealth Management



FACES OF URGENT CARE

ClearChoiceMD Urgent Care

ClearChoiceMD Urgent Care is celebrating five years of providing urgent medical care to the Rutland community!

At ClearChoiceMD, it's simple: exceptional and compassionate patient care is at the forefront of our physician owned and operated centers. We are here for you, in your neighborhood, at your convenience. Prompt, professional service from quality providers offering a warm welcome and the care you and your family deserve. We are committed to being your neighborhood access to urgent medical care.

Our urgent care center offers a wide variety of services for urgent, non-life-threatening illnesses and injuries – from colds,

flus, coughs, fevers, rashes, aches, pains and backaches to minor burns and cuts to simple broken bones. Additionally, we offer physicals, vaccinations and occupational health services such as drug testing and DOT physicals. Our state-of-the-art facility has on-site laboratory services and X-ray, as well as prescription medications you can take home.

We are dedicated to offering prompt, professional and quality care for you and your family. Because we operate on a walk-in basis—and are open 8AM – 8PM seven days a week—you can be confident that we'll be here when you need us.



FACES OF VERMONT LOCAL BANKING

The Bank of Bennington

A Vermont-based bank, The Bank of Bennington came to Rutland in 2017 opening a branch on Woodstock Avenue. What is special about this bank? First, it is a mutual bank, which means it has no shareholders, only customers to please. As a mutual bank, it cannot be bought. As other banks are merging out of state, The Bank of Bennington remains independent—rooted in Vermont and rooting for Vermont.

What else makes it stand out from the rest? It is dedicated to the communities it serves, and has a mission to help

them grow. The Bank of Bennington works with individuals, businesses, and organizations to encourage economic vitality, help strengthen the arts, and help keep food cupboards stocked.

The Rutland location complements branches in Bennington, Arlington, and Manchester. It is the perfect opportunity to bank local and support the local economy, because at The Bank of Bennington, your money stays here, works here, and that makes a difference.



FACES OF VERMONT VETERANS' HOME

Vermont Veterans' Home

The Vermont Veterans' Home is where our nation's Military Heroes live. A big difference between the Vermont Veterans' Home and other retirement/nursing homes are the options available for activities, entertainment, socializing, and education. Our philosophy of patient-centered care extends to the amenities designed for our residents' comfort and stimulation. With Skype carts for family chats, music and memory iPods, a Namaste relaxation room, on-site chapel, trout pond and sports bar, life on the Veterans' Home campus is diverse, enriching and engaging. Most importantly, our staff focuses on each individual and their needs. You will not find a "one-size-fits-all" approach here.



FACES OF VERMONT VETERANS' HOME

Vermont Veterans' Home

Situated on 84-acres along the Roaring Branch River in Bennington, the Vermont Veterans' Home features walking paths, gardens, a stocked trout pond and a herd of Fallow Deer. It is a first-class residential and healthcare campus. Natural light-filled corridors lead to lounges with expansive windows and each room has a view of a garden or wooded vista. The decor is warm and appealing and well maintained similar to military spit and polish. Five distinct 'neighborhoods' are set-off from each other, defined by the level of care they offer and their unique features and amenities. Each is a safe and friendly community all its own.



FACES OF VERMONT'S FIRST INDEPENDENT TRUST COMPANY

Trust Company of Vermont

The Trust Company of Vermont is a state chartered trust and investment management firm for individuals and families. Headquartered in Brattleboro with offices in Rutland, Burlington, Manchester and St. Albans, the Trust Company was chartered in September 1999 and is Vermont's first independent trust company.

We are devoted to investment management and trust services. The Trust Company is unique among fiduciaries and investment advisors for its combination of independence, local employee ownership, expertise, and approach to maintaining long-term relationships.

The founders of Trust Company of Vermont had simple goals: autonomy, stable long-term relationships, and a commitment to staying in their communities. Thus, the first independent trust company in Vermont was born.

The Trust Company of Vermont was founded as an employee-owned company in part to ensure that both the company and our employees remain part of our local communities and preserve our culture of service. In addition, for many in the investment world, management of assets often becomes just a product, but our service, based on financial security and family goals, focuses well beyond rates of return. Our model is best served by owning the company.

The majority of our staff came to Vermont from other areas of the trust and investment community. What we all have in common is a strong sense of place. Those born and raised in Vermont, and those who by chance or by selection found this place, for all, our place is Vermont. We are proud of our beautiful and historic Rutland office at 23 Court Street. Come in and we will be happy to show you.



Morgan Stanley

FACES OF WEALTH MANAGEMENT

Morgan Stanley

Front (l to r) **Barbara Carrara**-Senior Client Service Associate; **Nick Carmolli**-Branch Manager, Financial Advisor; **George Smith**-Financial Advisor; **William Munson**, Financial Advisor, **Robert Stedman**-Financial Advisor; **Christine Corbin**-Portfolio Associate.

You have meaningful goals.
Our Financial Advisors can help you reach them.
For over 80 years, we have worked with individuals, families, businesses and institutions—to deliver services and solutions that help build, preserve and manage wealth.

Morgan Stanley Smith Barney LLC. Member SIPC.
CRC 259003 6/19



FACES OF WORKFORCE EDUCATION

Community College of Vermont Workforce Education

The Community College of Vermont is your local source for quality workforce education. Our team will work with you to develop and implement customized solutions designed specifically for the needs of your business and your employees.

From afternoon workshops in computer skills, to credit-bearing courses in medical terminology, CCV can provide the solution you need when you need it. We can design customized trainings, align your needs to an industry credential, or help your employees along a path to degree. Could your business use employees with a stronger set of skills in Customer Service? Do you have managers and supervisors that could use Leadership Training? Is Excel a challenge you'd like help conquering? CCV has you covered.

Building on the successes of its proven credentialing programs in health care, business, and manufacturing, CCV is excited to announce the launch of three new registered apprenticeships in 2019. Apprenticeships will be offered in Medical Assisting, Pharmacy Technician, and Manufacturing Production Technician, and will give hard-working Vermonters the opportunity to earn while they learn.

Consider hosting an apprentice at your business, bringing a customized training to your workplace, or training your incumbent workers in a skill that will make your workplace more efficient. Contact us today at workforce@ccv.edu.



HANNOUSH
JEWELERS

FACES OF YOUR FAMILY JEWELER

Hannoush Jewelers

Since 2000, Hannoush Jewelers has been your local full service family jeweler that you can trust. Plain and simple, our mission is to make our customers happy. Whether it is a simple watch battery, fixing or revamping a family heirloom, or custom designing an elaborate engagement ring, we are thrilled to make it happen for you!

We pride ourselves in our knowledge, experience and customer service. Buying jewelry can be a daunting task to many, but one of our favorite things to do is educate our customers and help guide them through the process

of choosing that perfect piece for their loved one. Making a sale is great, but making your customer feel comfortable and happy with that sale is what matters the most to us.

We are proud to have been voted by the community as the Best Jeweler for the past 9 years running, as well as Best Customer Service for Any Business for the past 5 years. It means so much to us, knowing that our customers love us as much as we love them and appreciate their loyalty. We have the best job in the world. We get to celebrate love every day. How COOL is that??



YOUR LOCAL HOP ENERGY COMPANY!
get all season comfort with HOP

FACES OF YOUR FULL-SERVICE ENERGY PROVIDER

Keyser Energy

Keyser Energy knows, from 100 years of experience, emergencies don't always happen during regular business hours. We mean it when we say we're a full-service energy provider. That's why our customers know we are here day and night, weekends and holidays, 365 days a year.

For that commitment to the Rutland Area we have 26 hardworking Vermonters. Our drivers deliver Fuel and Propane through all weather conditions, certificated Technicians respond to emergency calls during all hours of the day and night. Our office crew greets and helps our customers in three local office - Brandon, Poultney, and Rutland.

We are excited to welcome a new member-Bill Kehoe, Operations Manager to the Keyser Energy Family, your local

HOP branch. Bill comes to us having served as a logistics officer in the US Marine Corps. He has also worked with global relief organizations including USAID and the UN providing logistics and operation support globally. In the private sector he has led logistics and operations efforts at locations throughout the US.

Here is more news! We have moved and combined our Rutland and Proctor office to 77 Grove St. Please stop by Suite G102 to check out our new space. Don't hesitate to call, email, or IM us.

Thank you, Rutland Region, for your support - Keyser Energy Family



FACES OF YOUR LOCAL YOUNG PROFESSIONALS GROUP

Rutland Young Professionals (RYP)

RYP works to create and promote a vibrant Rutland area for young professionals near and far. Over the past six years, we've fostered growth in the community by connecting like-minded people with one another and with job, volunteer and professional development opportunities.

Each month, we hold a free mixer where we have the chance to connect with each other and hear from local business owners and community leaders. At other times, our members organize meetups where we can casually get together for fun local events and activities.

RYP also values the professional development of its members by offering various learning opportunities and scholarship programs. Each fall we host the Young Professional Summit

of Vermont, a one-day event focused on networking, learning, and acting on issues facing the state's young workforce.

One of RYP's high-impact programs, Let's Dish, aims to help local employers recruit new talent to the Rutland area by having members meet with new or potential employees and share what the Rutland region has to offer.

Throughout our events and programs, our mission remains consistent. We're here to engage the Rutland community, create social and professional networking opportunities and work to build a Rutland area that attracts and retains young professionals. We believe Rutland is an exciting place to live and work and we want to share our enthusiasm to help grow the region.

MEMBER DIRECTORY

ACCOUNTING, BOOKKEEPING & TAX PREP

4 Seasons Accounting, LLC
(802) 775-3140
25 Curtis Ave.
Rutland, VT 05701
www.4seasonsaccounting.com

A.M. Peisch & Company
(802) 773-2721
27 Center St.
Rutland, VT 05701
www.ampeisch.com

Bonadio Group
(802) 775-8970
67 Merchants Row
Rutland, VT 05701
www.bonadio.com

Cavacas Associates
(802) 772-7902
2 Clover Street
Rutland, VT 05701
www.cavacasassociates.com

Davis & Hodgdon Associates, CPA's PLC
(802) 775-7132
49 North Main Street
Rutland, VT 05701
www.dh-cpa.com

H&R Block
(802) 775-5055
98 Allen Street
Rutland, VT 05701
www.hrblock.com

McCormack, Guyette & Associates, P.C.
(802) 775-3221
66 Grove Street
Rutland, VT 05701
www.cpa-vermont.com

O'Brien Shortle Reynolds & Sabotka, PC
(802) 773-8344
54 North Main Street
Rutland, VT 05701
www.vtcpa.com

Sharon Stearns CPA PLLC
(802) 247-8300
PO Box 22
Brandon, VT 05733
www.stearnscca.com

ADVERTISING & MEDIA

101 The One Radio
(802) 773-9264
1 Scale Ave. Bld. 18
Rutland, VT 05701
www.101theone.com

Catamount Radio
(802) 775-7500
250 Dorr Drive
Rutland, VT 05701
www.catamountradio.com

Comcast Spotlight
(802) 448-3443
299 North Main St.
Rutland, VT 05701
www.comcastspotlight.com/burlington

Freedom Publications
(802) 388-8458
58 Maple Street
Middlebury, VT 05753
www.vtphonebook.com/rutland

Killington TV 14
(802) 315-0140
5465 Route 4
Killington, VT 05751
www.killingtontv.com

Rutland Herald
(802) 747-6121
77 Grove Street
Rutland, VT 05701
www.rutlandherald.com

Rutland Magazine
(802) 672-2411
PO Box 264
Woodstock, VT 05091
www.rutlandmagazineonline.com

Rutland Region Community Television
(802) 747-0151
Howe Center, 1 Scale Ave Suite 108
Rutland, VT 05701
www.pegtv.com

The Mountain Times
(802) 422-2399
5465 Route 4
Killington, VT 05751
www.mountaintimes.info

Vermont Business Magazine
(802) 863-8038
365 Dorset St.
South Burlington, VT 05403
www.vermontbiz.com

Vermont Public Radio
(802) 654-4369
365 Troy Ave.
Colchester, VT 05446
www.vpr.net

WCAX - TV
(802) 310-5326
65 North Main Street
Rutland, VT 05701
www.wcax.com

AGRICULTURE, FISHING & FORESTRY

Baird Farm Maple Syrup
(802) 483-2963
65 West Road
N. Chittenden, VT 05763
www.bairdfarm.com

Baker Family Maple
(802) 779-4557
6977 Church St.
Wallingford, VT 05773

Green Mountain National Forest
(802) 747-6700
231 N. Main St.
Rutland, VT 05701
www.fs.fed.us/r9/gmfl

Mendon Mountain Orchards
(802) 775-5477
16 US Route 4
Mendon, VT 05701
www.mendonorchards.com

Rutland County Maple Producers
(802) 779-4557
6977 Church St.
Wallingford, VT 05773
www.facebook.com/rutlandcountymaple

Timbercraft Forestry
(802) 773-0370
3817 Middle Rd.
Clarendon, VT 05759
www.timbercraftforestry.com

Vermont Farmer's Market
(802) 683-4606
P.O. Box 1008
Rutland, VT 05701
www.vtfarmersmarket.org

ARTS, CULTURE & ENTERTAINMENT

C&C Fireworks
(802) 558-0478
206 US Route 4
Rutland, VT 05701
www.candcfireworks.com

Chaffee Art Center
(802) 775-0356
16 South Main Street
Rutland, VT 05701
www.chaffeeartcenter.org

**Hammond Chapman Foundation
For Yesterday's Living**
(802) 897-2633
1633 Route 74
Shoreham, VT 05770

Hathaway Farms & Corn Maze
(802) 775-2624
741 Prospect Hill Rd.
Rutland, VT 05701
www.hathawayfarm.com

Hocus Pocus Magic Show
(802) 747-5995
916 Route 7B Central
Clarendon, VT 05759
www.hocuspocusmagicshow.com

Killington Music Festival
(802) 773-4003
PO Box 386
Rutland, VT 05701
www.killingtonmusicfestival.org

MC Sounds
(802) 342-0533
Rutland, VT 05701
www.mcsounds.com

MEMBER DIRECTORY

Northstar Fireworks

(802) 229-9690
2235 VT Route 14 South
East Montpelier, VT 05651
www.northstarfireworks.com

Rutland County Agricultural Society, Inc.

(802) 775-5200
PO Box 10
Rutland, VT 05701
www.vermontstatefair.org

The Carving Studio & Sculpture Center

(802) 438-2097
636 Marble Street
West Rutland, VT 05777
www.carvingstudio.org

The Paramount Theatre

(802) 775-0570
30 Center Street
Rutland, VT 05701
www.paramountvt.org

Vermont Dining Train

(908) 688-7277
PO Box 3552
Union, NJ 07083
www.rails-vt.com

Vermont Marble Museum

(802) 459-2750
52 Main Street
Proctor, VT 05765
www.vermontmarblemuseum.org

Wonderfeet Museum

(802) 282-2678
11 Center Street
Rutland, VT 05701
www.wonderfeetkidsmuseum.org

ASSOCIATIONS AND NON PROFITS

Allen & Edward Gartner Partnership, LLP

(802) 775-4954
41 North Street Extension
Rutland, VT 05701

Associates for Training and Development

(802) 524-3200
3 Champlain Commons Suite 2
St Albans, VT 05478
www.a4td.org

Brandon Chamber of Commerce

(802) 247-6401
PO Box 267
Brandon, VT 05733
www.brandon.org

BROC Community Action

(802) 775-0878
45 Union Street
Rutland, VT 05701
www.broc.org

Cairo Shriners

(802) 747-3400
51 Washington Street
Rutland, VT 05701
www.cairoshriners.com

Child First Advocacy Center

(802) 747-0200
80 West Street
Rutland, VT 05701
www.childfirstvermont.org

Downtown Rutland Partnership

(802) 773-9380
48 Merchants Row
Rutland, VT 05701
www.downtownrutland.com

**Goodwill of the Berkshires &
Southern Vermont**

(802) 772-4383
259 North Main Street
Rutland, VT 05701
www.goodwill-berkshires.org

**Green Mountain Human Resource
Association**

(802) 776-2157
c/o Castleton University
Castleton, VT 05735
www.gmhra.shrm.org

Homeless Prevention Center

(802) 775-9286
56 Howe Street, Bldg. A
Rutland, VT 05701
www.hpcvt.org

Killington Pico Area Association

(802) 422-5722
2319 US-4
Killington, VT 05751
www.killingtonpico.org

New Story Center

(802) 775-6788
PO Box 313
Rutland, VT 05701
www.nscvt.org

Rutland Community Cupboard

(802) 747-6119
65 River Street
Rutland, VT 05701
www.rutlandcommunitycupboard.org

Rutland County Humane Society

(802) 483-6700
765 Stevens Road
Pittsford, VT 05763
www.rchsvt.org

Rutland County Parent Child Center

(802) 775-9711
61 Pleasant Street
Rutland, VT 05701
www.rcpcc.org

Rutland Economic Development Corp.

(802) 773-9147
67 Merchants Row
Rutland, VT 05701
www.rutlandeconomy.com

Rutland Redevelopment Authority

(802) 775-2910
1 Strongs Avenue
Rutland, VT 05701
www.rutlandvtbusiness.com

**Rutland Region Workforce
Investment Board**

(802) 775-0871
67 Merchants Row
Rutland, VT 05701
www.rwib.org

Rutland Regional Planning Commission

(802) 775-0871
67 Merchants Row
Rutland, VT 05701
www.rutlandrpc.org

Rutland Rotary South

PO Box 511
Rutland, VT 05701
www.portal.clubrunner.ca/2956

Salvation Army

(802) 775-5150
1 Scale Avenue, Building 12A
Rutland, VT 05701
www.nne.salvationarmy.org/Rutland

Southwestern VT Council on Aging

(802) 786-5990
143 Maple Street
Rutland, VT 05701
www.svcoa.org

Teen Challenge Vermont, Rutland

(802) 635-7807
197 West Street
Rutland, VT 05701
www.tcvermont.org

The Mentor Connector

(802) 775-3434
110 Merchants Row, Suite 210
Rutland, VT 05701
www.mentorconnector.com

United Way of Rutland County

(802) 773-7477
88 Park Street
Rutland, VT 05701
www.uwrutlandcounty.org

Vermont Symphony Orchestra

(802) 864-5741
2 Church Street, Suite 3B
Burlington, VT 05401
www.vso.org

ATTORNEYS

A. Jay Kenlan

(802) 772-4440
25 Washington Street
Rutland, VT 05701

Cleary Shahi & Aicher PC

(802) 775-8800
110 Merchants Row, Suite 3
Rutland, VT 05701
www.vttriallaw.com

MEMBER DIRECTORY

Eugene Rakow, PC

(802) 775-0242
24 Wales Street, Suite 6
Rutland, VT 05701

Facey Goss & McPhee, PC.

(802) 773-3300
71 Allen Street, Suite 401
Rutland, VT 05701
www.fgmvt.com

McCamley & Branchaud, P.C.

(802) 775-0064
24 Wales Street, Suite 6
Rutland, VT 05701
www.rutlandlawyers.com

McCann Morgan & Getty, PLLC

(802) 855-8060
36 Merchants Row
Rutland, VT 05701
www.mmgvtlaw.com

Pratt Vreeland, Kennelly, Martin & White

(802) 775-7141
64 North Main Street
Rutland, VT 05701
www.vermontcounsel.com

Ryan Smith & Carbine, Ltd.

(802) 786-1000
98 Merchants Row
Rutland, VT 05701
www.rsclaw.com

AUTOMOTIVE, AVIATION & MARINE

Alderman's Chevrolet

(802) 776-5000
65 Windcrest Road
Rutland, VT 05701
www.aldermanchevrolet.com

Alderman's Toyota

(802) 776-6000
33 Seward Road
Rutland, VT 05701
www.aldermanstoyota.com

Brileyas Chrysler Jeep

(802) 773-3555
1253 Us Route 7 North
Rutland, VT 05701
www.brileyaschryslerjeep.net

Formula Ford Lincoln Mercury

(802) 773-9168
4318 Middle Road
Rutland, VT 05701
www.fordvt.com

Garvey Nissan, Inc.

(802) 775-2355
78 Route 7 B Central
Clarendon, VT 05759
www.garveynissan.com

Green Mountain Car Rental

(802) 775-0101
158 North Main Street
Rutland, VT 05701
www.giancola.biz

Key Honda

(802) 773-4600
211 US Rt 7 South
Rutland, VT 05701
www.keyhondaofrutland.com

Morey Motors

(802) 747-3283
One Scale Ave., Unit 53
Rutland, VT 05701
www.facebook.com/Morey-Motors-
Inc-340951406006453/

Mountain View Equipment LLC

(802) 775-0710
4300 Middle Road
Rutland, VT 05701
www.mountainviewequip.com

New England Kenworth

(802) 725-0533
1385 US Route 7
Pittsford, VT 05763
www.newenglandkw.com

Parkers Classic Autoworks, Ltd.

(802) 775-3777
18A Chaplin Ave.
Rutland, VT 05701
www.parkersauto.com

Pittsford Automotive Center

(802) 483-6736
4122 US-7
Pittsford, VT 05763
www.pittsfordautocenter.com

Speedi Lube

(802) 773-4446
40 North Main Street
Rutland, VT 05701
www.facebook.com/Speedi-Lube-
service-970276343048068/

Vianor Tire Center

(802) 773-3360
133 Strong's Avenue
Rutland, VT 05701
www.vianor.us

Victory Auto Sales, Inc.

(802) 773-4326
417 West Street
Rutland, VT 05701

BANKS & CREDIT UNIONS

Bar Harbor Bank & Trust

(802) 773-1119
100 Woodstock Avenue
Rutland, VT 05701
www.bhbt.com

Berkshire Bank

(802) 773-5477
20-22 West Street
Rutland, VT 05701
www.berkshirebank.com

Community Bank

(802) 747-5000
286 US Route 7 South
Rutland, VT 05701
www.cbna.com

Credit Union of Vermont

(802) 773-0027
2 South Main Street
Rutland, VT 05701
www.cuvermont.com

Green Mountain Credit Union

(802) 776-1142
3141 Cold River Rd
Rutland, VT 05701
www.greenmountaincu.com

Heritage Family Credit Union

(802) 775-4930
30 Allen Street
Rutland, VT 05701
www.hfcuvt.com

Key Bank

(802) 773-0610
80 West Street
Rutland, VT 05701
www.key.com

NBT Bank

(802) 747-6982
122 West Street
Rutland, VT 05701
www.nbtbank.com

People's United Bank

(802) 775-8500
87 West Street
Rutland, VT 05701
www.peoples.com

TD Bank, N.A.

(802) 786-4160
89 Merchants Row
Rutland, VT 05701
www.td.com

The Bank of Bennington

(802) 774-5085
143 Woodstock Avenue
Rutland, VT 05701
thebankofbennington.com

VSECU

(800) 371-5162
72 Seward Road
Rutland, VT 05701
www.vsecu.com

MEMBER DIRECTORY

BUSINESS EQUIPMENT & TELECOMMUNICATIONS

ADKTechs

(518) 638-2020
5457 State Route 40
Argyle, NY 12809
www.adktechs.com

Comcast

(800) 266-2278
299 North Main Street, Suite 116
Rutland, VT 05701
www.xfinity.com

Consolidated Communications

(802) 775-0081
1431 US Route 7 North
Rutland, VT 05701
www.consolidated.com

SymQuest Group, Inc.

(802) 775-8570
190 South Main Street, Suite 1
Rutland, VT 05701
www.symquest.com/rutland-vt

CONSTRUCTION, EQUIPMENT & CONTRACTORS

A. Tedesco Masonry Inc.

(802) 773-8312
79 Plain Street, Suite #4
Rutland, VT 05701

Casella Construction Inc.

(802) 773-0052
8 US Route 4
Mendon, VT 05701
www.casellainc.com

CDP Electric, Inc.

(802) 483-2121
PO Box 6450
Rutland, VT 05701

Gagnon Lumber

(802) 483-6550
89 Stevens Road
Pittsford, VT 05763
www.gagnonlumber.com

Gawet Marble & Granite

(802) 773-8868
805 US-4 BUS
Center Rutland, VT 05736
www.gawetmarble.com

H. Hirschmann, Ltd.

(802) 438-4447
467 Sheldon Avenue
West Rutland, VT 05777
www.hhirschmannltd.com

Joseph P. Carrara & Sons, Inc.

(802) 775-2301
167 North Shrewsbury Road
North Clarendon, VT 05759
www.jpcarrara.com

Markowski Excavating, Inc.

(802) 483-6469
2704 West Creek Road
Florence, VT 05744
www.markowskiex.com

Morton Buildings, Inc.

(802) 468-8700
36 RT 4A East
Castleton, VT 05735
www.mortonbuildings.com

Paquette Plumbing, LLC

(802) 353-0125
125 Valley View Drive, Suite #1
Mendon, VT 05701
paquetteplumbing.com

RMG Stone Products Inc.

(802) 468-5636
680 E Hubbardton Road
Castleton, VT 05735
www.rmgstone.com

Rob Stubbins Electrical & General Cont

(802) 775-1484
395 US Route 4 East
Rutland, VT 05701
www.robstubbinslectrical.com

Rotella Building Materials Inc.

(802) 775-4383
325 West Street
Rutland, VT 05701
www.rotellakitchenandbath.com

Russell Construction

(802) 775-3325
170 South Main Street, Suite 6
Rutland, VT 05701
www.jarc.com

Rutland's Magic Brush Painting

(802) 775-7673
291 Mckinley Avenue
Rutland, VT 05701
www.magicbrushpainters.com

T.J. Phillips & Sons Construction

(802) 446-9040
188 Haven Hill Road
Wallingford, VT 05773

Toolcraft Rental and Sales Center

(802) 775-1808
144 Granger Street
Rutland, VT 05701
www.toolcraft.biz

Trees, Incorporated

(802) 773-2300
53 Gleason Road
Rutland, VT 05701
www.totaltrees.com

Vermont Quarries Corp.

(802) 775-1065
7 US Route 4
Mendon, VT 05701
www.vermontquarries.com

Vermont Roofing Company Inc.

(802) 775-4386
126 Spruce Street
Rutland, VT 05701
www.vermontroofing.com

VMS Construction

(802) 747-7010
103 Wales Street
Rutland, VT 05701
www.vmsgc.com

Wright Construction Co. Inc.

(802) 259-2094
31 Station Road
Mt. Holly, VT 05758
www.wrightconstruction.com

DISTRIBUTORS

Farrell Distributing

(802) 775-2391
200 Farrell Road
Rutland, VT 05701
www.farrelldistributing.com

Foley Distributing

(802) 773-3738
280 Seward Road
Rutland, VT 05701
www.foleydistributing.com

EDUCATION

Allstate Driving Instruction

(802) 775-9218
375 Notch Road
Mendon, VT 05701
www.allstatevt.com

Castleton University

(802) 468-1202
62 Alumni Drive
Castleton, VT 05735
www.castleton.edu

College of St. Joseph

(802) 773-5900
71 Clement Road
Rutland, VT 05701
www.csj.edu

Community College of Vermont

(802) 786-6996
60 West Street
Rutland, VT 05701
www.ccv.edu

Little Lambs Early Learning Center

(802) 747-0091
1 Hillside Road
Rutland, VT 05701
www.littlelambsrutland.org

Rutland Free Library

(802) 773-1860
10 Court Street
Rutland, VT 05701
www.rutlandfree.org

MEMBER DIRECTORY

Rutland Public Schools
(802) 773-1900
6 Church Street
Rutland, VT 05701
www.rutlandcitypublicschools.org

Stafford Technical Center
(802) 770-1032
8 Stratton Road
Rutland, VT 05701
www.staffordonline.org

Vermont Adult Learning
(802) 775-0617
16 Evelyn Street, Suite 101
Rutland, VT 05701
www.vtadultlearning.org

EMPLOYMENT AND STAFFING

Adecco NA
(802) 440-8111
210 South Street, Suite 5
Bennington, VT 05201
www.adeccousa.com

Leddy Group
(802) 786-2222
164 Woodstock Avenue
Rutland, VT 05701
www.leddygroup.com

U.S. Army Recruiting Station Rutland
(802) 775-2518
271 North Main Street
Rutland, VT 05701
www.goarmy.com

Vermont Department of Labor
(802) 786-5837
200 Asa Bloomer Bldg.
Rutland, VT 05701
www.labor.vermont.gov/workforce-development/career-resource-centers/rutland-resource-center

Voc Rehab Vermont
(802) 786-5866
190 Asa Bloomer Building
Rutland, VT 05701
www.vocrehab.vermont.gov

Working Fields
(802) 348-4610
The Loft
110 Merchants Row
Rutland, VT 05701
www.workingfieldsllc.com

ENGINEERS

Criterion-Lalancette & Dudka Engineers
(802) 747-4535
Tennybrook Square, Suite 4
230 North Main Street
Rutland, VT 05701
www.criterion-lalancette-dudka.com

Engineering Services of Vermont, LLC
(802) 855-8091
9 Washington Street
Rutland, VT 05701
www.esvtllc.com

Enman*Kesselring Consulting Engineers, PC
(802) 775-3437
61 Prospect Street
Rutland, VT 05701
www.enmankesselringengineers.com

Otter Creek Engineering
(802) 747-3080
110 Merchants Row, 4th Floor, Suite 15
Rutland, VT 05701
www.ottercrk.com

FINANCIAL ADVISORS

Edward Jones - Caitlin Trombetta, Financial Advisor
(802) 747-6907
170 South Main Street
Rutland, VT 05701
www.edwardjones.com

Edward Jones - Jeremy Carroll, Financial Advisor
(802) 773-7877
271 North Main Street, Suite 207
Rutland, VT 05701
www.edwardjones.com

Edward Jones - Lon Smith, Financial Advisor
(802) 773-5992
82 Woodstock Avenue
Rutland, VT 05701
www.edwardjones.com

Edward Jones - Reed Wilcox, Financial Advisor
(802) 773-9607
128 Merchants Row
Rutland, VT 05701
www.edwardjones.com

Edward Jones - Zerihune Finn, Financial Advisor
(802) 362-3562
107 Bonnet Street
Manchester, VT 05255
www.edwardjones.com

Morgan Stanley
(802) 775-4371
90 Merchants Row
Rutland, VT 05701
www.morganstanleybranch.com/rutland

RNL & Associates
(802) 773-4115
86 N. Main Street
Rutland, VT 05701
www.rnlpc.com

Trust Company of Vermont
(802) 776-9400
23 Court Street
Rutland, VT 05701
www.tcvermont.com

UBS Financial Services
(802) 772-3255
67 Merchants Row
Rutland, VT 05701
www.ubs.com

Vermont Retirement Planners
(802) 772-7945
87 North Main Street
Rutland, VT 05701
www.vtretirementplanners.com

Wells Fargo Advisors
(802) 770-1901
271 North Main Street, Suite 208
Rutland, VT 05701
home.wellsfargoadvisors.com/001_RDVT

INSURANCE

Cavalieri Insurance Agency, Inc.
(802) 773-9999
51 Merchants Row
Rutland, VT 05701
www.ciavt.com

Hull Maynard Hersey Agency
(802) 773-3000
105 Center Street
Rutland, VT 05701
www.hmhvt.com

Ken Nelson Agency
(802) 770-1751
187 West Street
Rutland, VT 05701
www.kennelsonagency.com

Kinney Pike Insurance, Inc.
(802) 775-2311
98 Merchants Row
Rutland, VT 05701
www.kinneypike.com

Liberty Mutual Insurance
(802) 747-0600
170 S. Main Street #102
Rutland, VT 05701
www.libertymutual.com/rrcc

NFP
(802) 775-4443
54 Woodstock Avenue
Rutland, VT 05701
www.nfp.com

Perkins Insurance Agency
(802) 773-3110
124 North Main Street
Rutland, VT 05701
www.nationwide.com

The Richards Group
(802) 747-6650
92 Center Street, 2nd floor
Rutland, VT 05701
www.therichardsgrp.com

Wehse & Kinney Insurance, Inc.
(802) 775-4343
1085 US Rt 4 East
Rutland, VT 05701

FUEL DEALERS/HOME HEATING

Amerigas
(802) 775-0531
11 Green Hills Lane
Rutland, VT 05701
www.amerigas.com

Keyser Energy
(802) 773-2567
77 Grove Street, Suite G102
Rutland, VT 05701
www.keyserenergy.com

Marcell Oil Company
(802) 775-5050
740 US Route 7
Pittsford, VT 05763
www.facebook.com/Marcell-Oil-Company-520287161385033/

Midway Oil Corp.
(802) 775-5534
217 North Main Street
Rutland, VT 05701
www.midwayoil.biz

Proctor Gas Inc.
(802) 459-3340
2 Market Street
Proctor, VT 05765
www.proctorgas.com

Suburban Energy
(802) 775-2357
289 Randbury Road
Rutland, VT 05701
www.suburbanpropane.com

FUNERAL HOMES

Aldous Funeral Home
(802) 773-6252
44 North Main Street
Rutland, VT 05701
www.aldousfuneralhome.com

Barnard Funeral Home Inc.
(802) 483-2811
3186 US Route 7
Pittsford, VT 05763
www.barnardfuneralhome.com

Clifford Funeral Home
(802) 773-3010
2 Washington Street
Rutland, VT 05701
www.cliffordfuneralhome.com

Tossing Funeral Home
(802) 773-7633
39 Washington Street
Rutland, VT 05701

GRAPHIC DESIGN, MARKETING & WEBSITES

Got2Web, LLC
(802) 773-0126
162 North Main Street
Rutland, VT 05701
www.got2web.com

Green Mountain Marketing & Advertising Inc.
(802) 558-3233
218 Lakewood Drive
Killington, VT 05751
www.greenmountainmarketingandadvertising.com

Lyz Tomsuden, Graphic Designer
(802) 345-8438
Rutland, VT 05701
www.lyztomsuden.com

HEALTH CARE AND WELLNESS

At Home Senior Care
(802) 747-3426
14 South Main Street
Rutland, VT 05701
www.athomeseniors.net

BalanceWorks Orthotic, Pedorthic & Orthopedic Shoe Lab of Vermont
(802) 773-1543
106 Allen Street
Rutland, VT 05701
www.balanceworks.biz

Bayada Hospice
(802) 282-4122
190 South Main Street, Suite 2
Rutland, VT 05701
www.bayada.com

ClearChoiceMD Urgent Care
(802) 772-4165
173 South Main Street
Rutland, VT 05701
www.ccmdcenters.com

Community Health
(802) 855-2083
215 Stratton Road
Rutland, VT 05701
www.chcrr.org

Cornerstone Dentistry
(802) 775-6981
240 Stratton Road
Rutland, VT 05701
www.cornerstonedentistryvt.com

Douglas M. Wilson, O.D., P.C.
(802) 775-9355
71 Allen Street, Suite 201
Rutland, VT 05701
www.dwilsonod.net

Dr. Richard DelBianco, Optometrist
(802) 773-0634
69 Allen Street
Rutland, VT 05701
www.visionsourcedrdelbianco.com

Fostering Wellness
(802) 773-8306
11 Cottage Street
Rutland, VT 05701
www.fosteringwellness.net

Phoenix Counseling & Wellness PLC
(802) 772-4675
198 North Main Street, Suite C5
Rutland, VT 05701
www.phoenixcounselingwellness.com

Physical Rehabilitation & Health Center
(802) 775-6961
245 Stratton Road
Rutland, VT 05701
www.rutlandchiropractor.com

PsychCare Network
(802) 773-8722
Rutland, VT 05701
www.psychcarenetwork.org

Pyramid Holistic Wellness Center
(802) 775-8080
120 Merchants Row
Rutland, VT 05701
www.pyramidvt.com

Recovery House, Inc.
(802) 446-2640
P.O. Box 207
Wallingford, VT 05773
www.recoveryhousevt.org

Regional Ambulance Service, Inc.
(802) 773-1746
275 Stratton Road
Rutland, VT 05701
www.rasvt.com

**Rutland Free Clinic/
Park Street Healthshare, Inc**
(802) 775-1360
145 State Street
Rutland, VT 05701
www.vtccu.org/rutland-free-clinic.html

Rutland Integrative Health
(802) 776-4901
26 West Street
Rutland, VT 05701
www.rutlandintegrativehealth.com

Rutland Mental Health Services
(802) 775-2381
PO Box 222
Rutland, VT 05701
www.rmhsccn.org

Rutland Pharmacy
(802) 775-2545
75 Allen Street
Rutland, VT 05701
www.rutlandpharmacy.com

Rutland Radiologists, Inc.
(802) 747-3620
PO Box 1839, Station A
Rutland, VT 05701

MEMBER DIRECTORY

Rutland Regional Medical Center

(802) 775-7111
234 Stratton Road
Rutland, VT 05701
www.rrmc.org

Rutland Rehab Massage

(802) 236-7079
196 Joshua Place
Rutland, VT 05701
www.facebook.com/Rutlandrehabmassage

The Village at White River Junction

(802) 295-7500
129 South Main Street, Suite #3
White River Junction, VT 05001
www.thevillageatwrj.com

Vermont Sports Medicine Center

(802) 775-1300
5 Albert Cree Drive
Rutland, VT 05701
www.vermontsportsmedicinecenter.com

Vermont Veterans' Home

(802) 447-6510
325 North Street
Bennington, VT 05201
www.vvh.vermont.gov

VNA & Hospice of the Southwest Region

(802) 775-0568
7 Albert Cree Drive
Rutland, VT 05701
www.vermontvisitingnurses.org

INDIVIDUAL

Jerry Hansen

(802) 770-8448
Rutland, VT 05701

INDUSTRIAL/MANUFACTURING

Carris Reels

(802) 773-9111
49 Main Street
Proctor, VT 05765
www.carris.com

Damascus Worldwide

(800) 451-4167
194 Seward Road
Rutland, VT 05701
www.damascusgear.com

Ellison Surface Technology

(802) 855-2913
106 Innovation Dr.
North Clarendon, VT 05759
www.ellisonsurfacetech.com

Foley Brothers Brewing

(802) 349-3146
79 Stone Mill Dam RD
Brandon, VT 05733
www.foleybrothersbrewing.com

GE Aviation

(802) 773-9121
210 Columbian Avenue
Rutland, VT 05701
www.geaviation.com

Omya, Inc.

(802) 770-7500
Whipple Hollow Road
Florence, VT 05744
www.omya-na.com

Westminster Cracker Company, Inc.

(802) 773-8888
1 Scale Avenue, Bldg 14, Suite 81
Rutland, VT 05701
www.westminstercrackers.com

LODGING, TRAVEL & TOURISM

AAA Northern New England

(802) 775-1558
302 US Route 7 South
Rutland, VT 05701
www.northernnewengland.aaa.com

Antique Mansion B & B

(802) 855-8372
85 Field Ave.
Rutland, VT 05701
www.antiquemansionbb.com

Best Western Inn & Suites

(802) 773-3200
5 Best Western Place
Rutland, VT 05701
www.BestWestern.com/rutlandkillington

Comfort Inn at Trolley Square

(802) 775-2200
19 Allen Street
Rutland, VT 05701
www.comfortinn.com/hotel-rutland-vermont-VT400

Hampton Inn/Rutland Killington

(802) 773-9066
47 Farrell Road
Rutland, VT 05701
www.rutlandhampton.com

Holiday Inn, Rutland/Killington

(802) 775-1911
476 US Rt 7 South
Rutland, VT 05701
www.hivermont.com

Marble Mansion Inn

(802) 265-4556
12W Park Place
Fair Haven, VT 05743
www.marblemansioninn.com

Mendon Mountain Orchards

(802) 775-5477
16 US Route 4
Mendon, VT 05701
www.mendonorchards.com

Quality Inn

(802) 773-3361
253 South Main Street
Rutland, VT 05701
www.choicehotels.com/vermont/rutland/quality-inn-hotels/vt068

Red Clover Inn

(802) 775-2290
54 Red Clover Lane
Mendon, VT 05701
www.redcloverinn.com

Rodeway Inn

(802) 775-2575
138 North Main Street
Rutland, VT 05701
www.choicehotels.com/hotel/vt041

MARKETS, DELIS & CATERING

East Creek Catering

(802) 775-0133
80 Belden Road, #6
Rutland, VT 05701
www.eastcreekcatering.com

Gill's Delicatessen

(802) 773-7414
68 Strongs Avenue
Rutland, VT 05701
www.gillsdeli.com

Kamuda's Country Market

(802) 483-2361
861 Arch Street
Pittsford, VT 05763
www.facebook.com/Kamudas

Maple Leaf Gifts & Wine

(802) 772-4642
170 Woodstock Avenue
Rutland, VT 05701
www.facebook.com/mapleleafgiftsandwine

The Market On West Street

(802) 499-8180
36 West Street
Proctor, VT 05765
www.facebook.com/TheMarketOnWest

The Vermont Butcher Shop

(802) 776-4005
180 South Main Street
Rutland, VT 05701
www.thevermontbutchershop.com

Waffle Cabin

(781) 910-6220
20 Moonbrook Drive
Rutland, VT 05701
www.wafflecabin.com

MUNICIPAL

City of Rutland

(802) 773-1800
52 Washington Street
Rutland, VT 05701
www.rutlandcity.org

MEMBER DIRECTORY

Rutland County Sheriff's Department

(802) 775-8002
88 Grove Street
Rutland, VT 05701
www.rutlandsheriff.net

Town of Proctor

(802) 459-3333
45 Main Street
Proctor, VT 05765
www.proctorvermont.com

Town of Rutland

(802) 773-2528
181 Business Route 4
Rutland Town, VT 05701
www.utlandtown.com

Town of West Rutland

(802) 438-2263
35 Marble Street
West Rutland, VT 05777
www.westrutlandtown.com

PERSONAL SERVICES & CARE

Adam & Eve Hair Designs

(802) 773-1155
122 Woodstock Avenue
Rutland, VT 05701
www.facebook.com/judybombhair

Blush Salon and Beauty Lounge

(802) 855-8722
60 Center Street
Rutland, VT 05701
www.blushsalonandbeautylounge.com

Henry's Barber Shop

(802) 773-6821
66 Williams Street
Rutland, VT 05701
www.henrysbarbershop.com

Joy of Nails

(802) 775-2917
165 Woodstock Ave.
Rutland, VT 05701

Shear Heaven Salon & Day Spa

(802) 773-8880
168 North Main Street
Rutland, VT 05701
www.shearheavenvt.com

Sport Clips

(802) 855-8384
474 Holiday Drive
Rutland, VT 05701
www.haircutmenrutlandvt.com

Supercuts

(802) 776-4958
306 South Main Street
Rutland, VT 05701
www.supercuts.com

PETS & VETERINARY

Clarendon Animal Clinic

(802) 775-4333
548 Rte. 7B N
North Clarendon, VT 05759
www.clarendonanimal.com

Head To Tail

(802) 772-4556
144 Grove Street
Rutland, VT 05701
www.headtotailvermont.com

Riverside Veterinary Care

(802) 773-4771
159 River Street
Rutland, VT 05701
www.riversidevetcare.com

Rutland Veterinary Clinic & Surgical Ctr.

(802) 773-2779
90 East Pittsford Road
Rutland, VT 05701
www.rutlandvet.com

The Pet Cage

(802) 786-0684
97 Crescent Street
Rutland, VT 05701

The Upbeat K9

(802) 855-8025
2631 North Grove Street
Rutland, VT 05701
www.theupbeatk9.com

PHOTOGRAPHY

Scott Herdling Photography

(802) 249-1455
Proctor, VT 05765
www.scottherdling.com

Vibe Portrait Art

(802) 773-8480
23 Washington Street
Rutland, VT 05701
www.vibeporraitart.com

PRINTING, PUBLISHING, AND PROMOTIONAL ITEMS

Awesome Graphics, Inc.

(802) 773-6143
77 Woodstock Avenue
Rutland, VT 05701
www.awesomegraphics.com

Grand Slam Signs, LLC

(802) 310-9102
PO Box 6017
Rutland, VT 05702-6017
www.grandslamsigns.com

Green Screen Graphics

(802) 773-0683
7 Pine Street
Rutland, VT 05701
www.greenscreengraphics.com

IBF Solutions

(802) 773-8620
1 Scale Ave #14
Rutland, VT 05701
www.ibfsolutions.com

Initial Ideas, Inc.

(802) 773-6310
142 West Street
Rutland, VT 05701
www.initialideasinc.com

Quickprint of Rutland

(802) 775-1029
414 Quality Lane
Rutland, VT 05701
www.quickprintvt.com

SPC Print Integrated

(802) 886-2201
19 Precision Drive
North Springfield, VT 05150
www.springfieldprinting.com

The Graphic Edge

(802) 855-8840
155 Seward Road
Rutland, VT 05701
www.thegraphicedge.com

Triller Print Source & Services

(802) 773-4080
25 Curtis Avenue
Rutland, VT 05701
www.trillerprintsource.com

Tuttle Printing & Engraving

(800) 776-7682
414 Quality Lane
Rutland, VT 05701
www.tuttleprinting.com

PROPERTY MANAGEMENT/ LANDSCAPING

Carpenter & Costin

(802) 775-5686
84 Deere Lane
Pittsford, VT 05763
www.carpentercostin.com

Gauthier Home Services, Inc.

(802) 797-8269
32 Clarendon Avenue
West Rutland, VT 05777
www.gauthierhomeservices.com

Intrinsic Property Services

(802) 558-1545
217 Mussey Street
Rutland, VT 05701
www.intrinsicps.com

Pratico's Landscaping & Fence Company

(802) 775-4382
349 Route 7 North
Rutland, VT 05701
www.praticos.com

MEMBER DIRECTORY

REAL ESTATE & APPRAISERS

Alison McCullough Real Estate

(802) 747-4531
29 Center Street, Unit 1
Rutland, VT 05701
www.alisonmcculloughrealestate.com

Ansin Consulting Group LLC

(978) 660-7001
17 Bryant Road
Lexington, MA 02420

Ault Commercial Realty, Inc.

(802) 773-0600
PO Box 6306
Rutland, VT 05701
www.aultcommercial.com

Blue Ridge Real Estate

(802) 747-4006
116 North Main Street
Rutland, VT 05701
www.blueridgevt.com

Central Vermont Property Valuation, PC

(802) 775-0255
264 Grove Street
Rutland, VT 05701

Century 21-Premier Properties

(802) 775-5565
210 South Main Street
Rutland, VT 05701
www.rutlandVermontRealEstate.com

Chris Fucci Associates LTD

(802) 747-0000
230 West Street
Rutland, VT 05701
www.fucciassociates.com

Four Seasons Sotheby's International Real

(802) 774-7007
85 North Main Street
Rutland, VT 05701
www.fourseasonsirr.com

Franzoni Real Estate Co.

(802) 772-4509
9 Center Street
Rutland, VT 05701
www.franzonirealty.com

Giancola Construction & Real Estate

(802) 773-6251
140 Granger Street
Rutland, VT 05701
www.Giancola.biz

Housing Trust of Rutland County

(802) 775-3139
13 Center Street, 2nd Floor
Rutland, VT 05701
www.housingrutland.org

K & V Properties Inc.

(802) 775-7722
49 Wales Street
Rutland, VT 05701

Maples Senior Living Community

(802) 776-1001
5 General Wing Road
Rutland, VT 05701
www.summitpmg.com/communities/maples-senior-living

Mecier Appraisal Services

(802) 773-2404
174 Tower Lane
West Rutland, VT 05777
www.centralvtappraisers.com

MKF Properties/The Loft

(802) 747-6381
P.O. Box 99
Rutland, VT 05701
www.mkfpropertiesvt.com

RE/MAX Summit

(802) 772-0670
1360 US Route 4
Mendon, VT 05701
www.vtsummitre.com

Rutland Housing Authority

(802) 775-2926
5 Tremont Street
Rutland, VT 05701
www.rhavl.org

The Fucci Company Inc.

(802) 773-9107
6 Regency Manor, Suite 1
Rutland, VT 05701
www.thefuccicompany.com

TPW Real Estate

(802) 342-1230
4903 Main Street
Manchester Center, VT 05255
www.tpwrealestate.com

Watson Realty & Associates PLC

(802) 773-3500
182 Woodstock Avenue
Rutland, VT 05701
www.vtwatsonrealty.com

Yeager Family Partners

(734) 276-3659
38 Kendall Avenue
Rutland, VT 05701

RESTAURANTS AND CONFERENCE CENTERS

Applebee's Grill & Bar

(802) 747-7700
225 Woodstock Avenue
Rutland, VT 05701
www.applebees.com

Big Lenny's Inside Job

(802) 236-1775
56 Strongs Avenue
Rutland, VT 05701
www.biglennys.com

Brix Bistro

(802) 776-4175
118 Merchants Row
Rutland, VT 05701
www.brixbistro.com

Casey's Caboose

(802) 422-3795
1930 Killington Road
Killington, VT 05751
www.caseyscaboose.com

Domino's Pizza

(802) 775-0044
24 Wales Street
Rutland, VT 05701
www.dominos.com

Franklin Conference Center

(802) 773-0045
1 Scale Ave
Rutland, VT 05701
www.franklinconferencecenter.com

Franklin's Restaurant

(802) 459-3320
25 North Street
Proctor, VT 05765
www.franklinsinproctor.com

Ground Round Grill & Bar

(802) 773-2828
559 US Rt. 7 South
Rutland, VT 05701
www.groundround.com

Hop'n Moose Brewing Co.

(802) 775-7063
41 Center Street
Rutland, VT 05701
www.hopnmoose.com

Johnny Boys Pancake House

(802) 855-8043
182 US Route 4 East
Rutland, VT 05701
www.johnnyboyspancakehouse.com

Little Harry's

(802) 747-4848
121 West Street
Rutland, VT 05701
www.littleharrys.com

Mama T's Country Kitchen

(802) 775-9902
205 US Route 4 East
Rutland, VT 05701
www.mamatscountrykitchen.com

Maxie's Deli

(802) 775-2007
93 State Street
Rutland, VT 05701

McDonald's

(802) 747-3365
60 Center Street, #6
Rutland, VT 05701

MEMBER DIRECTORY

Ninety Nine Restaurant & Pub

(802) 775-9288
315 South Main Street
Rutland, VT 05701
www.99restaurants.com

Peppino's Ristorante Italiano

(802) 422-9517
747 Killington Rd
Killington, VT 05751
www.peppinosvt.com

Roots The Restaurant

(802) 747-7414
55 Washington Street
Rutland, VT 05701
www.rootsrutland.com

Seward's Family Restaurant

(802) 773-2738
224 North Main Street
Rutland, VT 05701

Southside Steakhouse

(802) 772-7556
170 South Main Street
Rutland, VT 05701
www.southsidesteakhouse.com

Sugar and Spice

(802) 773-7832
43 Route 4 East
Mendon, VT 05701
www.vtsugarandspice.com

Ted's Pizza Shop

(802) 773-6368
91 State Street
Rutland, VT 05701
www.tedspizzavt.com

The Bakery

(802) 775-3220
122 West Street
Rutland, VT 05701
www.thebakeryrutland.com

The Draught Room

(802) 855-8709
46 Diamond Run Mall Place
Rutland, VT 05701
www.draughtroomvt.com

The Sandwich Shoppe

(802) 773-2580
56 1/2 Merchants Row
Rutland, VT 05701
www.facebook.com/The-Sandwich-Shoppe-176638942349221/

Vermont Taphouse

(802) 775-0000
120 South Main Street
Rutland, VT 05701
www.vermonttaphouserutland.com

RETAIL

Allen Pools & Spa

(802) 775-5952
1901 US Route 4
Mendon, VT 05701
www.allenpools-spas.com

AT&T Mobility

(802) 342-2865
474 Holiday Drive
Rutland, VT 05701
www.att.com

Bead Warehouse

(802) 775-3082
Mendon, VT 05701
www.beadwarehouse.com

Bennington Furniture

(802) 773-2703
17 Business Route 4
Rutland, VT 05701
www.benningtonfurniture.com

Best Appliance & Kitchens

(802) 773-4292
120 Woodstock Avenue
Rutland, VT 05701
www.bestappliance.biz

Carpet King of Vermont

(802) 438-2077
245 Marble Street
West Rutland, VT 05777
www.carpetkingofvt.com

Carpet Warehouse, Inc.

(802) 747-3314
164 US Rt 4 East
Rutland, VT 05701
www.carpetwarehousevt.com

Col Cycling

(802) 417-1857
140 North Main Street
Rutland, VT 05701
www.facebook.com/colcycling

Diamond Run Mall

(802) 773-1145
#1 Diamond Run Mall
46 Diamond Run Mall Place
Rutland, VT 05701
www.diamondrunmall.com

Diamonds and More

(802) 773-7277
7 Center Street
Rutland, VT 05701
www.diamondsandmore.us

Exotica Flowers

(802) 773-0004
133 Woodstock Avenue
Rutland, VT 05701
www.exoticaflowerzrutland.com

Frank Webb Home

(802) 775-1022
3089 Cold River Road
Rutland, VT 05701
www.frankwebb.com

Grow Vermont LLC

(802) 779-6237
38 Wales Street
Rutland, VT 05701
www.facebook.com/Grow-Vermont-244410319430857

GT Outdoor Power Equipment

(802) 773-2709
70 1/2 Park Street
Rutland, VT 05701
www.garlandsfarmandgarden.com

Hannoush Jewelers

(802) 773-4455
152 Woodstock Avenue
Rutland, VT 05701
www.hannoush.com

Home Depot

(802) 786-6900
299 U.S. RT 4 East
Rutland, VT 05701
www.homedepot.com

Interstate All Battery Center Of Rutland

(802) 786-9075
71 River Street
Rutland, VT 05701
www.interstatebatteries.com

LaValley Building Supply

(802) 775-0834
48 Windcrest Road
Rutland, VT 05701
www.lavalleys.com

Noble Ace Hardware

(802) 773-2758
251 North Main Street
Rutland, VT 05701
www.nobleace.com

Park Place Florist & Garden Center, Inc.

(802) 775-2626
72 Park Street
Rutland, VT 05701
www.parkplacefloristreetnet

Phoenix Books Rutland

(802) 855-8078
2 Center Street
Rutland, VT 05701
www.phoenixbooks.biz

Poultney Pools

(802) 438-2500
551 Rutland Road
West Rutland, VT 05777
www.poultneypools.com

Rutland Appliances

(802) 747-8830
439 US Route 7 N
Rutland, VT 05701
www.rutlandappliance.com

Sandri Sunoco #281

(802) 747-0209
278 South Main Street
Rutland, VT 05701
www.sandri.com

MEMBER DIRECTORY

Sensible Shoe

(802) 773-7515
171 US Route 4 E
Rutland, VT 05701
www.sensibleshoe.com

Sherwin Williams

(802) 773-9212
76 Woodstock Avenue
Rutland, VT 05701
www.sherwin-williams.com

Staples - The Office Superstore

(802) 773-0116
317 South Main Street
Rutland, VT 05701
www.staples.com

Stewart's Shops

(802) 775-7948
8062 Route 40
Harford, NY 12838
www.stewartsshops.com

The Emporium, Tobacco & Gifts

(802) 775-2552
131 Strongs Avenue
Rutland, VT 05701
www.emporiumvt.com

The Party Store

(802) 773-3155
129 Strongs Avenue
Rutland, VT 05701
www.thepartystores.com

The Sparkle Barn

(802) 446-2044
1509 US 7 South
Wallingford, VT 05773
www.thesparklebarnshop.com

Timco Jewelers & Goldsmiths

(802) 773-3377
59 Center Street
Rutland, VT 05701
www.timcojewelers.com

Vermont Bedrooms

(802) 775-5250
159 US Route 4 East
Rutland Town, VT 05701
www.vermontbedrooms.com

SERVICES

Atomic Professional Audio, Inc.

(802) 775-5550
364A Innovation Drive
North Clarendon, VT 05759
www.atomicproaudio.com

Business Coach Vermont

(802) 776-8922
PO Box 246
Killington, VT 05751
www.businesscoachvt.com

Celebration Rentals

(802) 247-0002
P.O. Box 387
Brandon, VT 05733
www.celebrateinvermont.com

Commercial Building Services

(802) 773-7765
PO Box 6042
Rutland, VT 05701

Disaster Recovery Inc.

(802) 483-9552
3162 US Route 7
Pittsford, VT 05763
www.disasterrecoveryinc.com

Foley Services

(800) 639-0110
133 State Street
Rutland, VT 05701
www.foleylinen.com

HR Acquired

(802) 558-6053
Center Rutland, VT 05736
www.hracquired.com

Long Trail Tattoo & Piercing

(802) 747-7000
476 Route 7B North
North Clarendon, VT 05759
www.facebook.com/LongTrailTattoo

Page's Full Service Concierge & Cleaning

(802) 258-0701
64 Lafayette Street
Rutland, VT 05701
www.facebook.com/Pagesfullserviceconciergeandcleaning

Pockette Pest Control

(802) 465-8530
PO Box 357
Brandon, VT 05733
www.pockettepestcontrol.com

Robert C. Williams Associates, P.C.

(802) 746-8917
810 Upper Michigan Road
Pittsfield, VT 05762
www.r.c.wa.com

Servpro of Bennington & Rutland Counties

(802) 375-1500
191 Millbrook Road
Sunderland, VT 05250
www.servprobenningtonrutlandcounties.com

The Royal Group Inc.

(802) 773-3313
150 Woodstock Avenue
Rutland, VT 05701
www.theroyalgroupinc.com

The Vermont Country Store

(802) 824-3184
657 Main Street
Weston, VT 05161
www.vermontcountrystore.com

UniFirst Corp.

(603) 448-0011
125 Etna Road
Lebanon, NH 03766
www.unifirststreetcom

United States Postal Service

(802) 773-0301
151 West Street
Rutland, VT 05701
www.usps.gov

SPORTS & RECREATION

Adaptive Martial Arts Association

(802) 747-8184
PO Box 225
Pittsford, VT 05763
www.adaptivemartialarts.com

Born To Dance Studio

(802) 770-8694
29 Center Street
Rutland, VT 05701
www.facebook.com/Born-to-Dance-studio-495992147606688/

Cobra Gymnastics & Dance Center

(802) 772-7011
56 Howe Street, Bld. H #10
Rutland, VT 05701
www.cobravt.com

Green Mountain National Golf Course

(802) 422-4653
476 Barrows Towne Road
Killington, VT 05751
www.gmngc.com

Green Mountain Storyville

(802) 558-4924
46 Diamond Run Place
Rutland, VT 05701
www.facebook.com/greenmountainstoryville

Killington /Pico Ski Resort Partners, LLC

(802) 422-6201
4763 Killington Road
Killington, VT 05751
www.killington.com

MACC LLC

(802) 247-3611
224 Town Farm Road
Brandon, VT 05733
www.neshobe.com

Mendon Mini Golf & Snack Bar

(802) 776-4921
2556 US Route 4
Mendon, VT 05701
www.mendonminigolf.com

Otter Creek Fun Center

(802) 293-9200
1800 Route 7
Danby, VT 05739
www.ottercreekfuncenter.com

MEMBER DIRECTORY

Proctor Pittsford Country Club

(802) 483-9379
311 County Club Drive
Pittsford, VT 05763
www.proctor-pittsford.com

Rutland Bowlerama

(802) 773-7707
158 South Main Street ,Suite 1
Rutland, VT 05701
www.rutlandbowlerama.com

Rutland Country Club

(802) 773-7061
275 Grove Street
Rutland, VT 05701
www.rutlandcountryclub.com

Stonehedge Golf & FootGolf Course

(802) 773-2666
216 Squire Road
North Clarendon, VT 05759
www.stonehedgegolf.com

Stonehedge Indoor Golf

(802) 779-9595
172 South Main Street
Rutland, VT 05701
www.stonehedgeindoorgolf.com

The Gymnasium

(802) 773-5333
11 Cottage Street
Rutland, VT 05701
www.thegymnasium.net

True Yoga Vermont

(802) 772-7728
22 Wales Street
Rutland, VT 05701
www.trueyogavermont.com

Vermont Adaptive Ski & Sports

(802) 786-4991
PO Box 139
Killington, VT 05751
www.vermontadaptive.org

Vermont Brew Arena Football, Inc.

(518) 248-4482
1127 North Avenue, Suite 27 #213
Burlington, VT 05408
www.vermontbrewfootball.com

Vermont Martial Arts Academy

(802) 773-1373
12 Merchants Row
Rutland, VT 05701
www.vermontmarblemuseum.org

Vermont Sport & Fitness

(802) 775-9916
40 Curtis Avenue
Rutland, VT 05701
www.vermontsportandfitness.com

TRANSPORTATION

Cape Air

(800) 352-0714
1002 Airport Rd.
North Clarendon, VT 05759
www.capeair.com

Columbia Air Services - Rutland, LLC

(802) 773-3348
1004 Airport Road
North Clarendon, VT 05759
www.columbiaairservices.com

Laz Parking

(802) 855-8710
102 West Street
Rutland, VT 05701
www.lazparking.com

Marble Valley Regional Transit/The Bus

(802) 773-3244
158 Spruce Street
Rutland, VT 05701
www.thebus.com

Premier Coach Co. Inc./VT Translines

(802) 655-4456
946 Route 7 South
Milton, VT 05468
www.VTtranslines.com

Rutland Southern Vermont Regional Airport

(802) 786-2579
1002 Airport Road
North Clarendon, VT 05759
www.flyrutlandvt.com

Todd Transportation

(802) 775-2377
25 Curtis Avenue
Rutland, VT 05701
www.toddtransportation.com

Vermont Railway

(802) 775-4356
118 Post Street
Rutland, VT 05701
www.vermontrailway.com

UTILITIES AND ENVIRONMENT

Casella Waste Systems

(802) 775-0325
25 Greens Hill Lane
Rutland, VT 05701
www.casella.com

eDF renewables

(802) 299-5668
69 Merchants Row
Rutland, VT 05701
www.edf-re.com/distributed-solutions

Efficiency Vermont

(802) 540-7706
128 Lakeside Ave. Ste. 401
Burlington, VT 05401
www.efficiencyvermont.com

Green Mountain Power

(802) 773-2711
2152 Post Rd.
Rutland, VT 05701
www.greenmountainpower.com

Rutland County Solid Waste District

(802) 775-7209
2 Green Hills Lane
Rutland, VT 05701
www.rcswd.com

SunCommon

(802) 798-2657
442 US Rte 2
Waterbury, VT 05676
www.suncommon.com

VELCO

(802) 773-9161
366 Pinnacle Ridge Road
Rutland, VT 05701
www.velco.com

Vermont Gas Systems

(802) 951-0373
85 Swift Street
South Burlington, VT 05403
www.vermontgas.com

WORSHIP

Calvary Bible Church

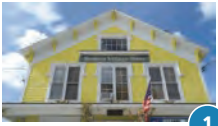
(802) 775-0358
2 Meadow Lane
Rutland, VT 05701
www.cbcbvt.org

Gateway Church

(802) 773-0038
144 Woodstock Avenue
Rutland, VT 05701
www.gatewaychurchunited.com

Rutland Jewish Center

(802) 773-3455
96 Grove Street
Rutland, VT 05701
www.rutlandjewishcenter.org



1

BENSON

The Benson Village Store

Hungry? Or maybe you need to mail a letter, fill up the gas tank, and report your big game kill, all at the same time? Then you need to stop at the Benson Village Store in the quaint town of Benson. It's much more than a store — it's where the locals gather around the well-worn farm table to share news and old stories. The store is owned by a former Philadelphia-area native, so be sure to try the cheese steaks.



4

CHITTENDEN

Unbroken Forest

Chittenden is Vermont's largest town by area, chartered in 1780 and named after the state's first Governor, Thomas Chittenden. Most of the town is unbroken National Forest interrupted only by the Chittenden Reservoir, a serene, 750-acre lake virtually untouched by development. Hikers, horseback riders, and cross-country skiers make their way to Chittenden for natural adventure in every season.



2

BRANDON

Vermont's 'Art and Soul'

Brandon is known as the 'Art and Soul' Village of Vermont, a title earned for its vibrant community of art galleries and eateries that invite visitors to enjoy the town's culture. History and learning opportunities can be found at the Stephen A. Douglas Birthplace and the New England Maple Museum, while the nearby Moosalamoo National Recreation Area offers miles of forest for biking, hiking, and camping.



5

CLARENDON

Clarendon Gorge

Just south of Rutland City, Clarendon, Vermont, is home to the Rutland Southern Vermont Regional Airport and some of the most picturesque swimming holes in the state. The most famous spot is Clarendon Gorge, accessible via a short (1/10 of a mile) section of the Appalachian Trail. After crossing an Indiana Jones-like suspension bridge, you can work your way down the side of the gorge to deep, cool pools of mountain water.



3

CASTLETON

Friendly and Picturesque

Castleton is best known as home to Castleton University, a public liberal arts college with a wide-ranging curriculum. Located on the scenic Stone Valley Byway, Castleton is known for its quintessential New England beauty and warm hospitality. Visit the sandy beaches of Lake Bomoseen for swimming and boating, or hike the self-guided Slate History Tour for glimpses of the quarries that once dominated Castleton's industry.



6

DANBY

Home of Imperial Danby Marble

Like several other towns in Rutland County, Danby sits atop a rich vein of mineral deposits. Danby's specialty is a high-grade architectural marble, respectfully known as "Imperial Danby." It's been used to construct many notable buildings, including the Supreme Court building and the Jefferson Memorial in Washington D.C.



7

FAIR HAVEN

VT's Western Gateway

Known as Vermont's Western Gateway, Fair Haven, located in the 'hook' along the border with New York State, is anchored by a charming village and a large central green just north of the downtown business district. The homes in and around downtown, celebrated for their gorgeous Victorian architecture, have housed generations upon generations of Vermonters.



8

HUBBARDTON

Home of The Battle of Hubbardton

Hubbardton is best known for the Battle of Hubbardton of 1777, the only Revolutionary War Battle to be fought entirely in Vermont. Today, you can visit the battlefield where the outnumbered Americans prevailed against the British, and visit the museum that details its place in the nation's history. After taking in some history, campers can enjoy the peace and quiet Half Moon State Park, set on Half Moon Pond, with waterfront lean-tos and cabins.

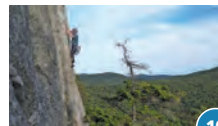


9

IRA

Preserving History

The people of Ira are dedicated to preserving the rich history of their town. For over 200 years, residents hosted community gatherings in the Ira Town Hall, which has stood since 1800. By the 1990's, however, it was crumbling away. Rather than lose their beloved landmark, townsfolk called in the US Army. With the help of Army and a national grant, the Ira Town Hall was restored to its former glory and remains to this day a gathering place for the hardworking citizens of this Vermont town.



10

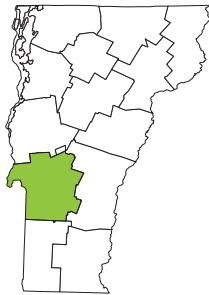
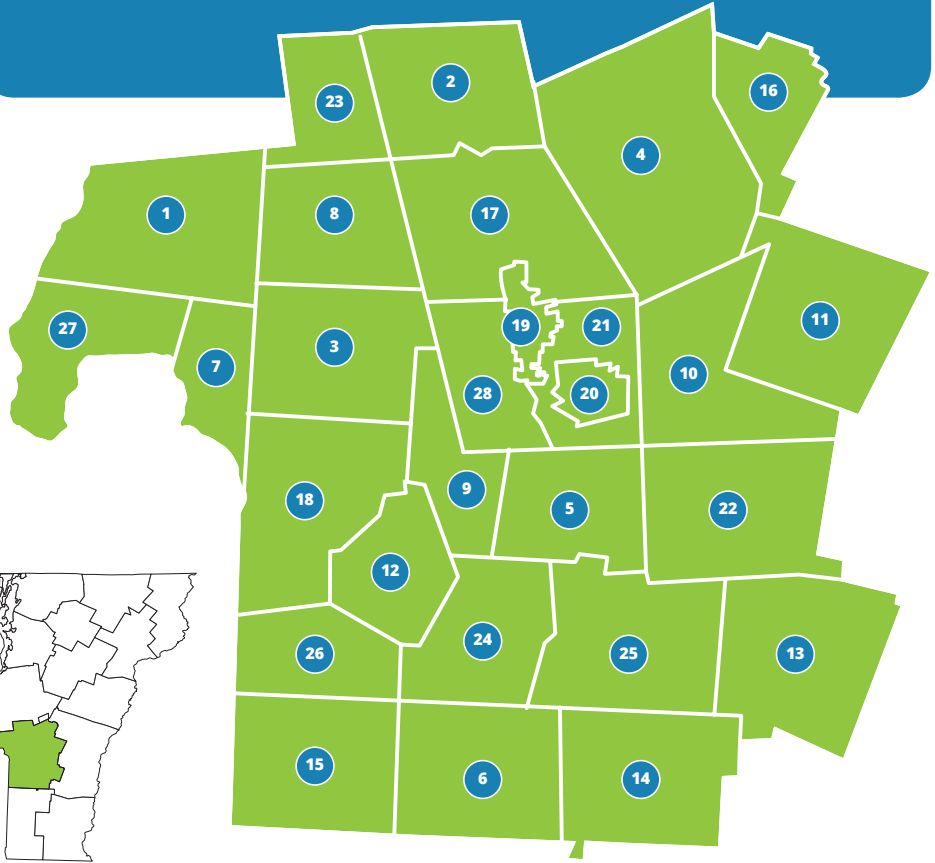
MENDON

Make It Homebase

Mendon is situated on the Long Trail at the base of Killington Mountain, from which hikers and skiers can access a spectacular peak from their choice of trails. The town offers a peaceful homebase to southern Vermont's best features, including the Pico Mountain, the city of Rutland, and Chittenden Reservoir.

EXPLORE our towns

OF RUTLAND COUNTY





11

KILLINGTON *Mountain Access*

Killington is home to both Killington Peak and Pico Peak, and has been welcoming outdoor adventurers for over 200 years. Today, Killington Resort invites skiers and snowboarders to experience the mountains, while the Green Mountain National Golf Course is one of the state's best public courses. Numerous hiking trails make their way to the peaks' spectacular summits, and backpackers celebrate the 100-mile mark of VT's historic Long Trail.



14

MOUNT TABOR *Life Off the Beaten Path*

Mount Tabor is nearly tied with West Haven for the lowest population in the region and has fewer than 100 households. Most of the town is part of the Green Mountain National Forest and is full of adventures for those who enjoy life off the beaten path. The Mount Tabor County Store is most recognizable landmark in town and has, some say, the best coffee in the region.



15

PAWLET *Taconic Mountain Town*

Although Vermont is best known for the Green Mountains, the Taconic Mountain range also extends into the southwestern corner of the state. Near the northern terminus of the Taconics lies Pawlet, a postcard-perfect town defined by valley farmlands and unspoiled mountain peaks. After building an appetite from hiking the gorgeous nearby trails, stop in for dinner at The Barn Restaurant, known for its live bluegrass music and Wednesday night "Pickin' in Pawlet" open mic nights.



12

MIDDLETOWN SPRINGS *Gem in the Hills*

Middletown Springs is a vibrant, creative community with scores of artists, artisans, and agricultural businesses. Its rich history as a resort destination, with flowing springs, continues to lend character to the town.



13

MOUNT HOLLY *Minutes from Okemo*

Mount Holly is the hometown of snowboarder Hannah Teter, who won the gold medal in halfpipe at the 2006 Olympics. It's no wonder she rose to greatness, as Mount Holly is a winter sports enthusiast's ideal locale. Okemo Mountain is only 10 minutes away, and Killington Mountain (the East's largest ski area) is 45 minutes away.



16

PITTSFIELD *Mountains & Maple Syrup*

Pittsfield makes good use of its mountainous terrain and New England charm. The notoriously difficult annual Pittsfield Snowshoe Race (and even more extreme Death Race) challenges contestants from all over. The unofficial town center is found at the Original General Store, serving up delicious breakfast, local news, and Vermont maple syrup.



17

PITTSFORD *Sunshine Village*

Pittsford was first settled in 1769, and still hosts archaeological remains of Vermont's oldest homesteads. Since then, it's been dubbed 'Sunshine Village' for receiving the most sunshine of any other town in Vermont. Situated along Otter Creek, Pittsford is home to abundant wildlife, covered bridges, and working farms.



18

POULTNEY *Home of the Good Life*

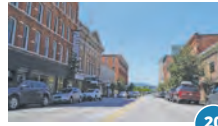
Poultney is located on the New York-Vermont border and has earned the name 'Home of the Good Life' for its vibrant community and location in the beautiful Lake St. Catherine region. Poultney's downtown reflects the care and commitment of its citizens to preserve the town's history and values.



19

PROCTOR *Marble Capital of Vermont*

When people think Proctor, one word comes to mind: marble. A huge vein was discovered in the 1800s, right as railroad construction in the US was booming, and Italy (the main supplier of marble on the world market) was exhausting its deposits. Timing is everything, and Proctor quickly became the world's #1 supplier of marble. Drive through town, and you'll see the impact of this industry: the main bridge in town, house foundations, and even the firehouse are made of pure marble.



20

RUTLAND CITY *Historic Downtown*

Rutland's historic downtown is the seat of Rutland County and the heart of Vermont's third largest city. Murals of elephants and whales showcase the local art scene, as well as the brick walls of Rutland's 19th-century buildings. The flavors and culture of Vermont are on proud display in Rutland, a cultural hotspot nestled between mountain ranges.



21

RUTLAND TOWN *Natural Wonder & Renowned Hospitality*

Rutland is situated between two mountain ranges, the Green Mountains that gave Vermont its name and the northern section of the Taconic Range. Surrounding an historic downtown, Rutland hosts visitors seeking VT's natural wonder and renowned hospitality. Access historic footpaths and local flavor from the town that defines Rutland County.



22

SHREWSBURY *Nature Lover's Dream*

There's just something about Shrewsbury when it comes to love and nature. Matt Danaher, owner of Danaher Fishery, nurtures thousands of trout every year for release into VT's waterways. The Shrewsbury Sno-Birds, a snowmobile club founded 1971, has a mission to "encourage the preservation of our natural environment." And in 1986, a lovestruck moose spent 2 months courting a Shrewsbury farmer's cow. Though the moose's advances went unrequited, the story lives on in the book "A Moose for Jessica."



23

SUDBURY *Where Farmland and Mountains Mingle*

In the northwestern corner of Rutland County sits Sudbury, a town of about 500 people where small farms dot the rolling landscape. In the center of Sudbury, just past the intersection with Rte. 73, pull over at the very Instagrammable Congregational Church, which was built in 1803 and doubles as the town hall. Then drive a few miles south and visit Understory Farm, an organic flower farm that is completely powered by draft horses.



24

TINMOUTH *Remote and Wild*

Tinmouth lies 25 minutes south of Rutland, where a small population enjoys spectacular views of the Taconic Mountains. Home to unique wetland areas and biodiversity, much of the town land belongs to the Tinmouth Channel Wildlife Management Area, seeking to conserve this special place. For those who hike, hunt, fish, or canoe, Tinmouth is a rare, remote escape into Vermont's wild character.



25

WALLINGFORD *Green Mtn. National Forest*

With more than half of its land area in the northernmost portion of the Green Mountain National Forest, Wallingford is breathtakingly gorgeous, yet easily accessible. The center of town, just a 15-minute drive from downtown Rutland, features restaurants, bars, and shops. Take a hike on the Appalachian Trail as it winds its way over Wallingford's mountains. For a special treat, visit Little Rock Pond in early October when fall foliage is at its peak.



26

WELLS *Lake St. Catherine & Little Lake*

Swimmers and kayakers, rejoice. Wells is lucky to have not one, but two gorgeous bodies of water: Little Lake and Lake St. Catherine. Launch your vessel at the Fish and Game station between the two lakes, then keep your eyes peeled; blue herons, ring bill gulls, red tail hawks, pileated woodpeckers, loons and even bald eagles are commonly spotted here.



27

WEST HAVEN *Slate Capital of Vermont*

Situated along the New York border, West Haven, Vermont, lies at the southernmost tip of Lake Champlain and is home to a rich vein of slate, which for the past century and a half has been used for everything from chalkboards to roof shingles. Get your heart racing with a visit to Devil's Bowl Speedway, the longest auto race track in Vermont; it's also where Governor Phil Scott became the only sitting governor to win a Vermont stock car race, in the summer of 2017.



28

WEST RUTLAND *Land of Marble*

Chartered in 1761, West Rutland found its place on the map when high-quality white marble — and lots of it — was discovered in the 1830s. Since the end of the marble industrial era, it's history has been kept alive at The Carving Studio and Sculpture Center, and by protecting the West Rutland Marsh. Rare bird species have made a home here, created by sand discarded by the marble industry. Birders, hikers, and history buffs make their way to West Rutland to experience VT's storied landscape.



FACES of Real Rutland



PRODUCER/PUBLISHER
Rutland Region Chamber of Commerce
50 Merchants Row | Rutland, VT 05701
(802) 773-2747 | rutlandvermont.com



PHOTOGRAPHY
Vibe Portrait Art
23 Washington St. | Rutland, VT 05701
(802) 773-8480 | vibeportraitart.com
vibecommercialimaging.com



GRAPHIC DESIGN
Lyz Tomsuden
Rutland, VT | (802) 345-8438
lyztomsuden.com



PRINTER
SPC Print Integrated
19 Precision Dr. | Springfield, VT 05150
(802) 886-2201 | springfieldprinting.com